

## What is Mandatory WELS?

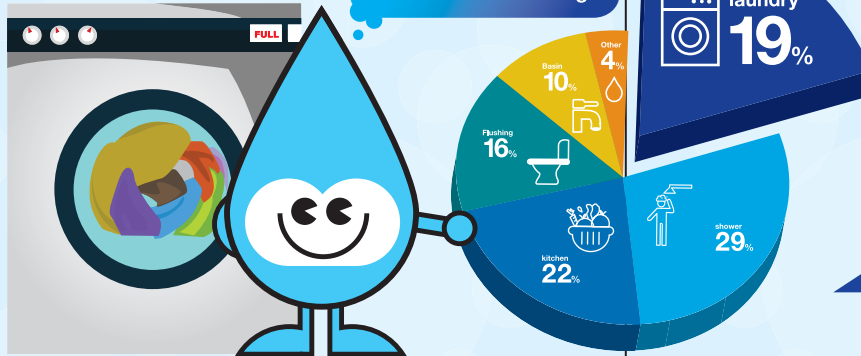
The Mandatory Water Efficiency Labelling Scheme (Mandatory WELS) started in 2009 and is a grading system of 0/1/2/3 ticks to reflect the water efficiency of a product. Under the scheme, taps and mixers, dual-flush low capacity flushing cisterns (LCFCs), urinal flush valves and waterless urinals are labelled according to how water efficient they are. The more ticks a product has, the more water-efficient it is. This is a follow-up scheme from Voluntary Water Efficiency Labelling Scheme (Voluntary WELS) which was introduced in 2006. The labelling of showerheads will continue to be voluntary under the Voluntary WELS.



## How to Read

- 1 Zero-tick products are not water efficient.
- 2 Products with the most ticks are recommended as they save more water.
- 3 The labels show the products' water consumption, type, brand and model.
- 4 All labels carry a registration number for validation.

## Breakdown of household water usage

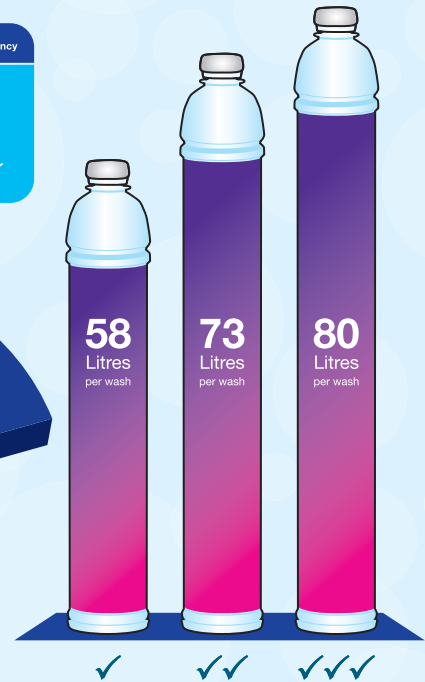


## Go with More Ticks

Starting 1 Oct 2011, washing machines are included in Mandatory WELS. With this scheme, consumers can make informed choices on the washing machines when making purchases. It also helps to raise public awareness on water conservation and encourages more water efficient products on the market.

## Amount of Water Saved

Rating	Water Efficiency
Zero Tick	○
Good	✓
Very Good	✓✓
Excellent	✓✓✓



## How to Choose?



- 1 Select a washing machine of suitable capacity that meets your household needs.
- 2 Choose a model with more ticks on the water efficiency label.
- 3 Look for a model with the lowest water consumption per wash as indicated on the label.

## Tips for You

- 1 Wash clothes on full load.
- 2 Choose the correct wash cycle for more water and cost efficient wash.
- 3 Collect rinse water from the last cycle of the washing machine for flushing toilet or mopping the floor.



www.pub.gov.sg/wels

## Trim that Water Bill

# SAVE MORE

with Water Efficient Washing Machines

