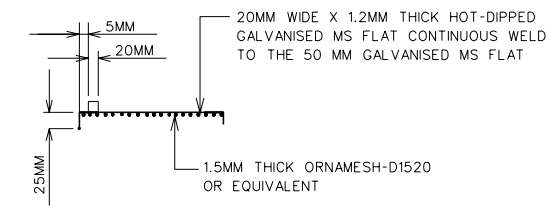
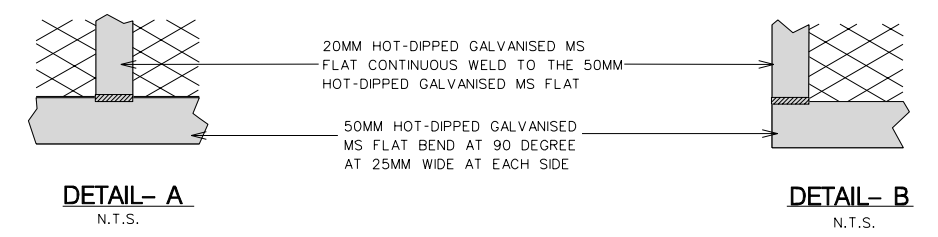


**PLAN VIEW**

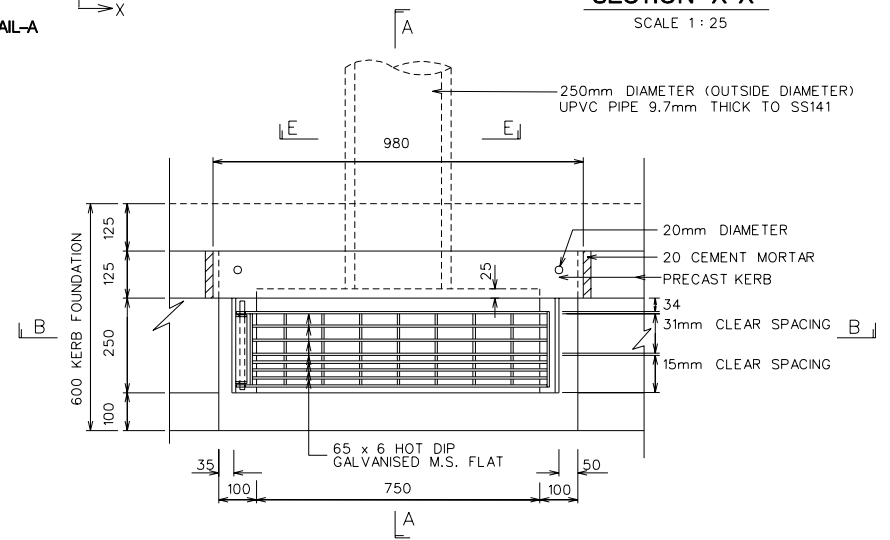


**SECTION X-X**  
SCALE 1:25

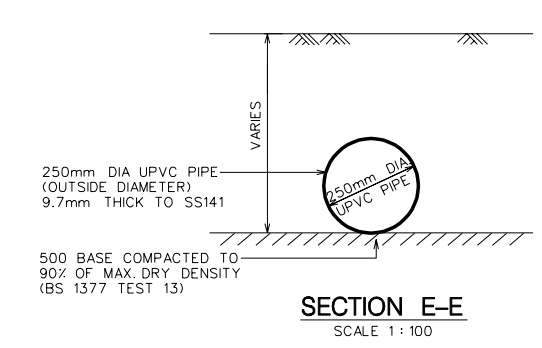


**DETAIL- A**  
N.T.S.

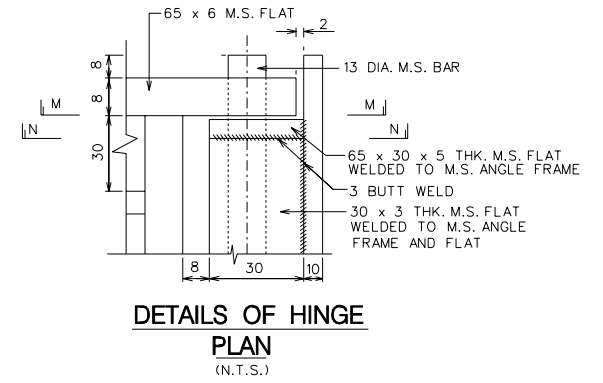
**DETAIL- B**  
N.T.S.



**PLAN VIEW OF PRECAST CONCRETE DROP INLET CHAMBER**  
SCALE 1:10

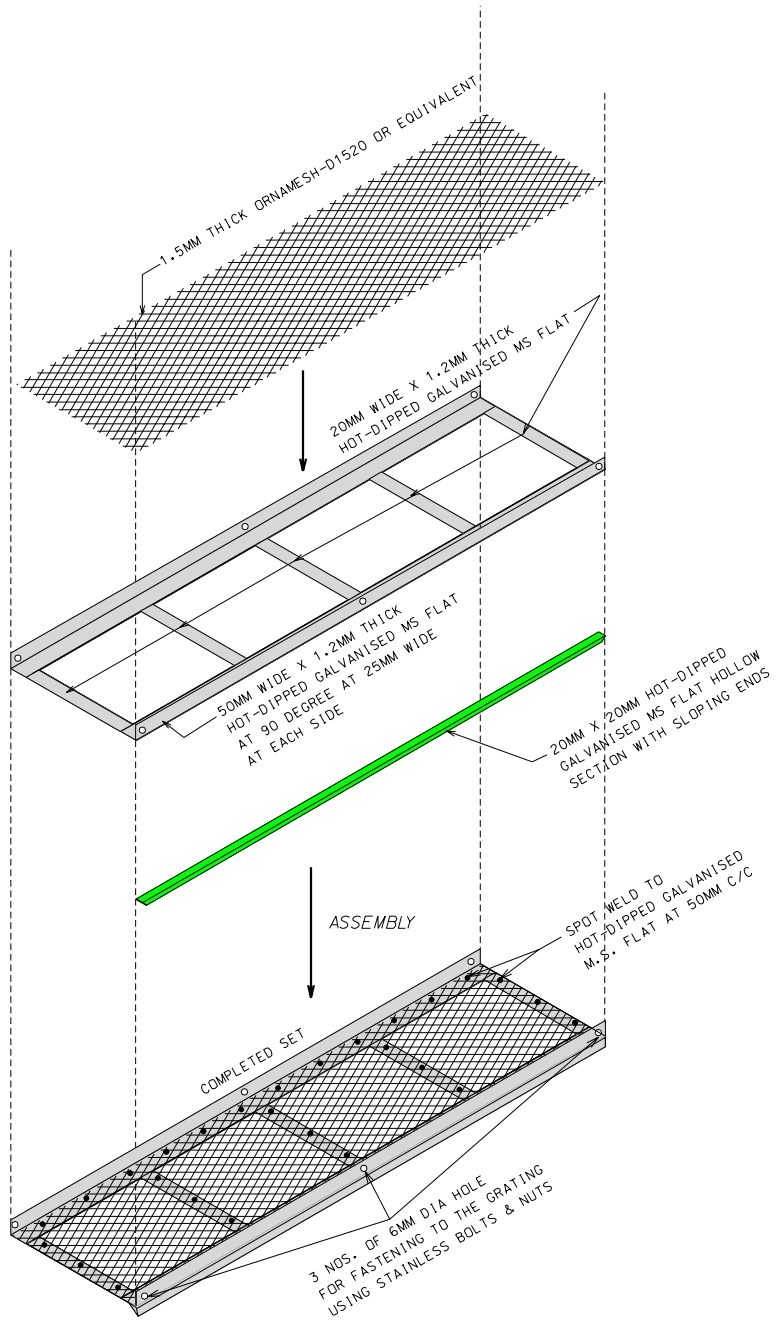


**SECTION E-E**  
SCALE 1:100

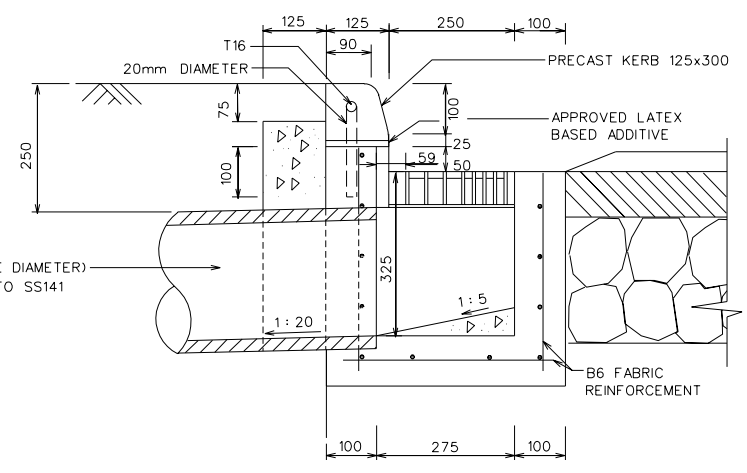


**DETAILS OF HINGE PLAN**  
(N.T.S.)

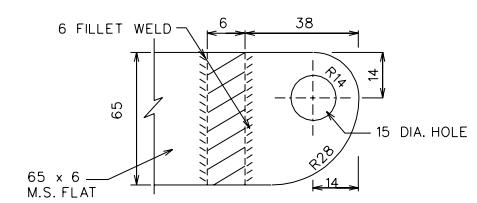
**DETAILS OF DROP INLET CHAMBER**



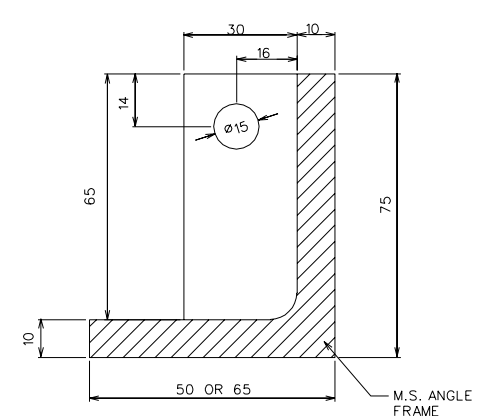
**ISOMETRIC VIEW FROM BELOW**  
N.T.S.



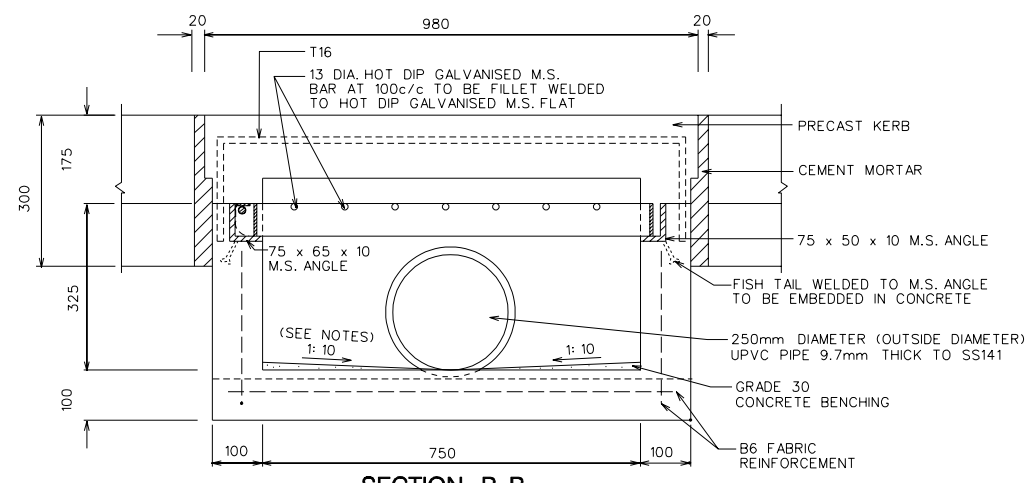
**SECTION A-A**  
SCALE 1:75



**SECTION M-M**  
N.T.S.




**SECTION N-N**  
SCALE 1:10



**SECTION B-B**  
SCALE 1:75

- NOTES**
1. ALL DIMENSIONS ARE IN mm UNLESS OTHERWISE STATED.
  2. ALL CONCRETE TO BE GRADE 30 UNLESS OTHERWISE STATED.
  3. THE GRATINGS SHALL CONSIST OF ONE PANEL HINGED AT ONE END OF THE DROP-INLET CHAMBER AND SHALL BE HOT DIP GALVANISED CONFORMING TO SS 117.
  4. STRUCTURAL DETAILS OF THE GRATINGS AND DROP-INLET CHAMBER SHALL BE DESIGNED TO WITHSTAND TRAFFIC LOADINGS IN ACCORDANCE WITH LTA'S REQUIREMENTS.
  5. DROP-INLET CHAMBERS SHALL BE PROVIDED OVER THE ENTIRE ROAD CARRIAGEWAY AT NOT MORE THAN 6.0m INTERVALS; AT T-JUNCTIONS THE INTERVALS SHALL BE REDUCED TO NOT MORE THAN 3.0m. THESE SPACING SHALL BE APPLICABLE FOR CARRIAGEWAY WIDTHS OF NOT MORE THAN 3 LANES.
  6. ALL FABRICS REINFORCEMENT CONFORM TO THE SS 32.
  7. ALL GALVANISING TO BE HOT DIPPED GALVANISED COATING CONFORMING TO S.S. 117
  8. GRADE 15 CONCRETE BENCHING SHALL BE GRADED TOWARDS THE 250mm DIA. UPVC PIPES OPENING TO ELIMINATE STAGNATION OF WATER IN THE DROP-INLET CHAMBER. GRADIENT OF 1:10 FOR FLAT GROUND.

REVISION		APPROVED BY :	
1	CHANGE OF DEPARTMENT NAME AND PUB LOGO	POON S. H.	Date
2	CHANGE DRAWING NO. PUB/D/1555/D/01 TO PUB/BS/D/1555/D/01	GANGATHARAN	Dy. Director
3	NEW SCUPPER PIPE DESIGN		
 <b>BEST SOURCING DEPARTMENT</b> SCHEME			
<b>STANDARD DRAWING FOR DRAINAGE WORKS</b>			
PROJECT TITLE			
DRAWING TITLE			
<b>DETAILS OF DROP INLET CHAMBER AND LEAF COVER</b>			
SCALE AS SHOWN			
APPROVED BY :	DIRECTOR	YAP K. G.	SIGNED 17-9-03
CHECKED BY :	Asst. DIRECTOR	ONG-CHUA S. E.	SIGNED 17-9-03
DESIGNED BY :	Asst. DIRECTOR	CHIA B. H.	SIGNED 17-9-03
DRAWN BY :	TSD GRADE VII	TAN H. S.	SIGNED 17-9-03
FILE NAME :	BSD1555d_01.dgn	ARCHIVED REF :	ARCHIVED BY :
DRAWING NO.		KOH G. L.	
PUB/BS/D/1555/D/01			