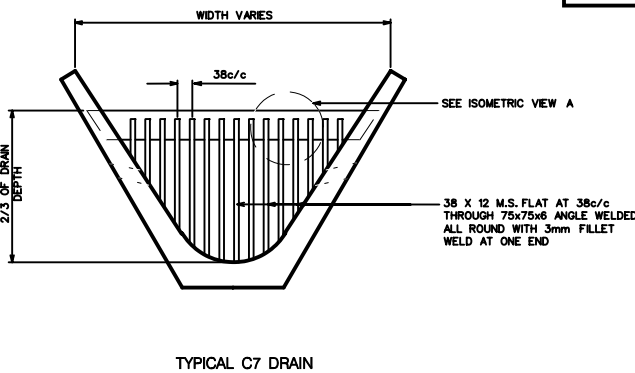
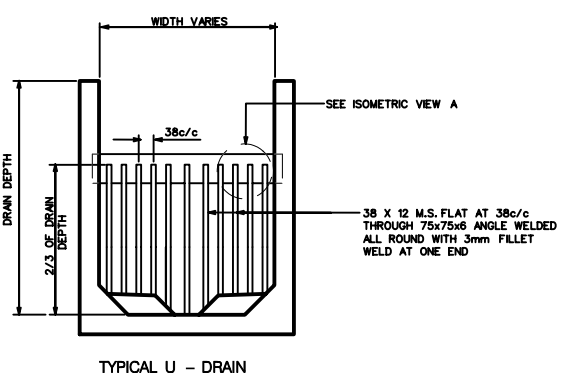
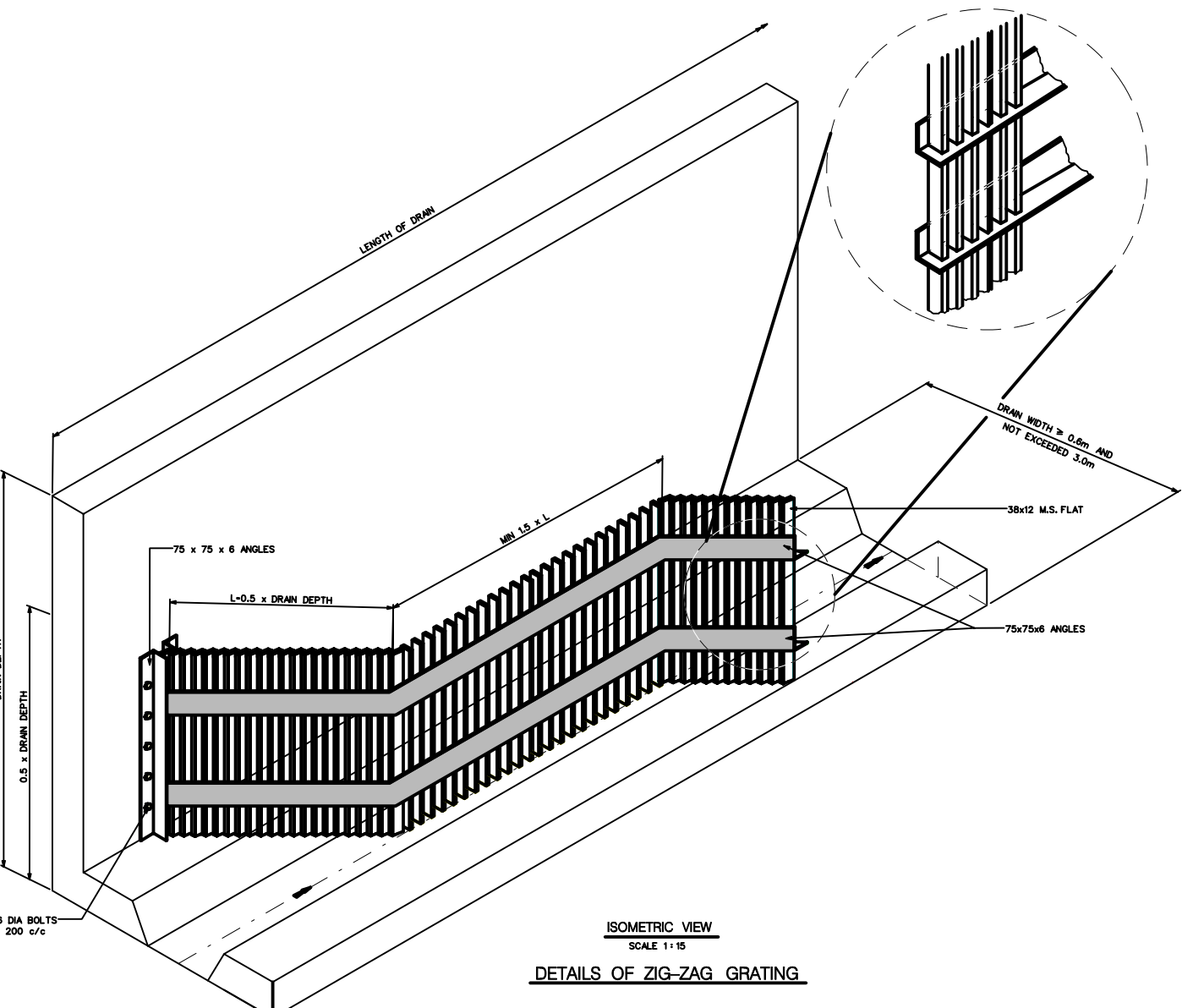
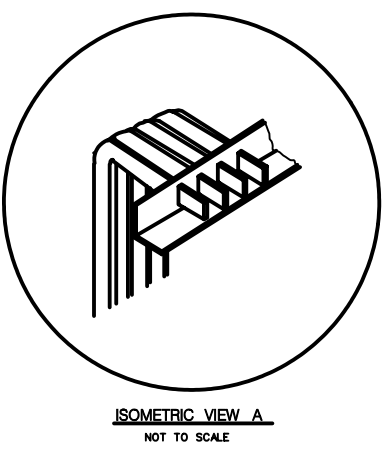
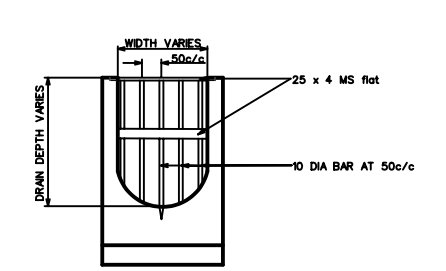
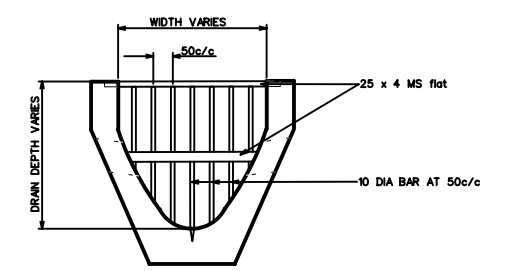


- NOTES**
1. ALL DIMENSIONS ARE IN mm UNLESS OTHERWISE STATED.
  2. M.S. FLATS SHALL BE HOT DIPPED GALVANISED AND PAINTED WITH TWO COATS OF BLACK BITUMINOUS PAINT.
  3. 'H' - HEIGHT OF DRAIN, 'W' - WIDTH OF DRAIN.
  4. 38 X 12 mm M.S. FLATS SHALL EXTEND TO DRY WEATHER FLOW AND CHANNEL INVERT.
  5. ALL WELDINGS SHALL BE 3 mm FILLET WELDS.
  6. THE EMBEDMENT OF STEEL ANGLES IN DRAINS WALL SHALL BE 100mm
  7. ANY HACKING OF DRAIN STRUCTURE FOR THE EMBEDMENT OF GRATING SHALL BE MADE GOOD WITH GRADE 30 CONCRETE TO THE FULL SATISFACTION OF S.O.
  8. ZIG ZAG GRATING TO BE PROVIDED IN THE OPEN DRAIN AT 1.0m AWAY FROM THE INTERFACE OF OPEN AND COVERED DRAIN.
  9. VERTICAL GRATINGS AT OPEN ROADSIDE DRAIN CONNECTING TO CLOSED DRAIN SHALL BE INSTALLED AT 1.0m AWAY FROM THE INTERFACE OF OPEN AND CLOSED DRAIN.
  10. VERTICAL GRATINGS FOR COMPOUND DRAINS SHALL BE INSTALLED IN THE COMPOUND DRAIN CONNECTING TO THE ROADSIDE DRAIN AT THE EDGE OF THE BOUNDARY WALL.



VERTICAL GRATINGS AT OPEN ROADSIDE DRAIN CONNECTING TO CLOSED DRAIN SCALE 1:10



VERTICAL GRATINGS FOR COMPOUND DRAINS SCALE 1:10

REVISION	A
PREPARED BY :	APPROVED BY :
 <b>PUB</b> Water for All : Conserve, Value, Enjoy <b>BEST SOURCING DEPARTMENT</b>	
<b>STANDARD DRAWING FOR DRAINAGE WORKS</b>	
PROJECT TITLE	
DRAWING TITLE	
<b>DETAILS OF ZIG ZAG GRATING, VERTICAL GRATINGS AND MILD STEEL SCREENS</b>	
AS SHOWN	
APPROVED BY: Dy. DIRECTOR	T. GANGATHARAN
CHECKED BY: ASST. DIRECTOR	POON S. H.
PREPARED BY: SENIOR MANAGER	OW P. P.
DRAWN BY: HIGHER TECHNICIAN	NORADAH
FILENAME: BSD168C_01	ARCHIVED REF: PUB_STD
	ARCHIVED BY: KOH G. L.
DRAWING NO.	
PUB / BSD / D / 168C / 01	