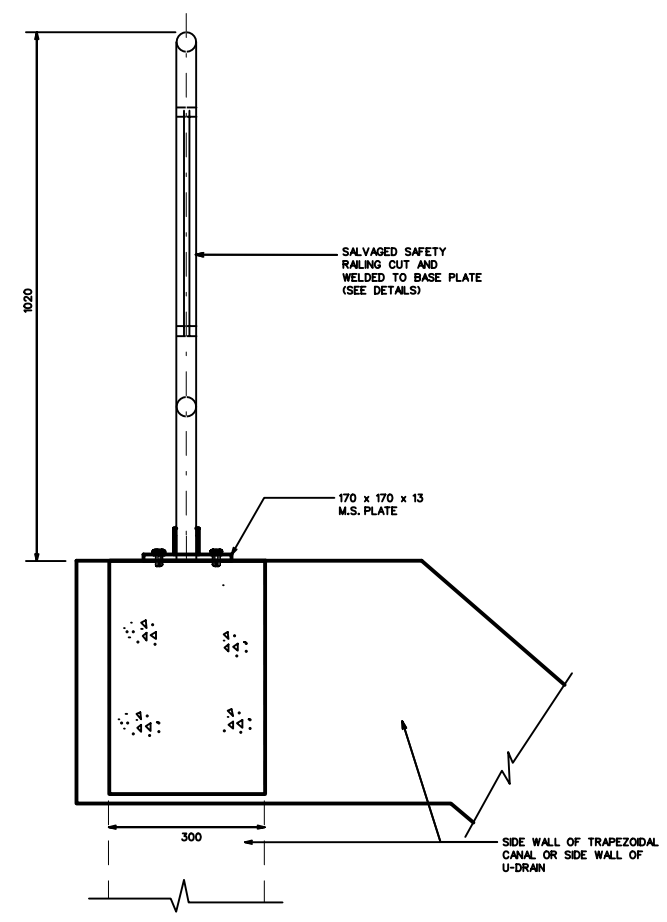
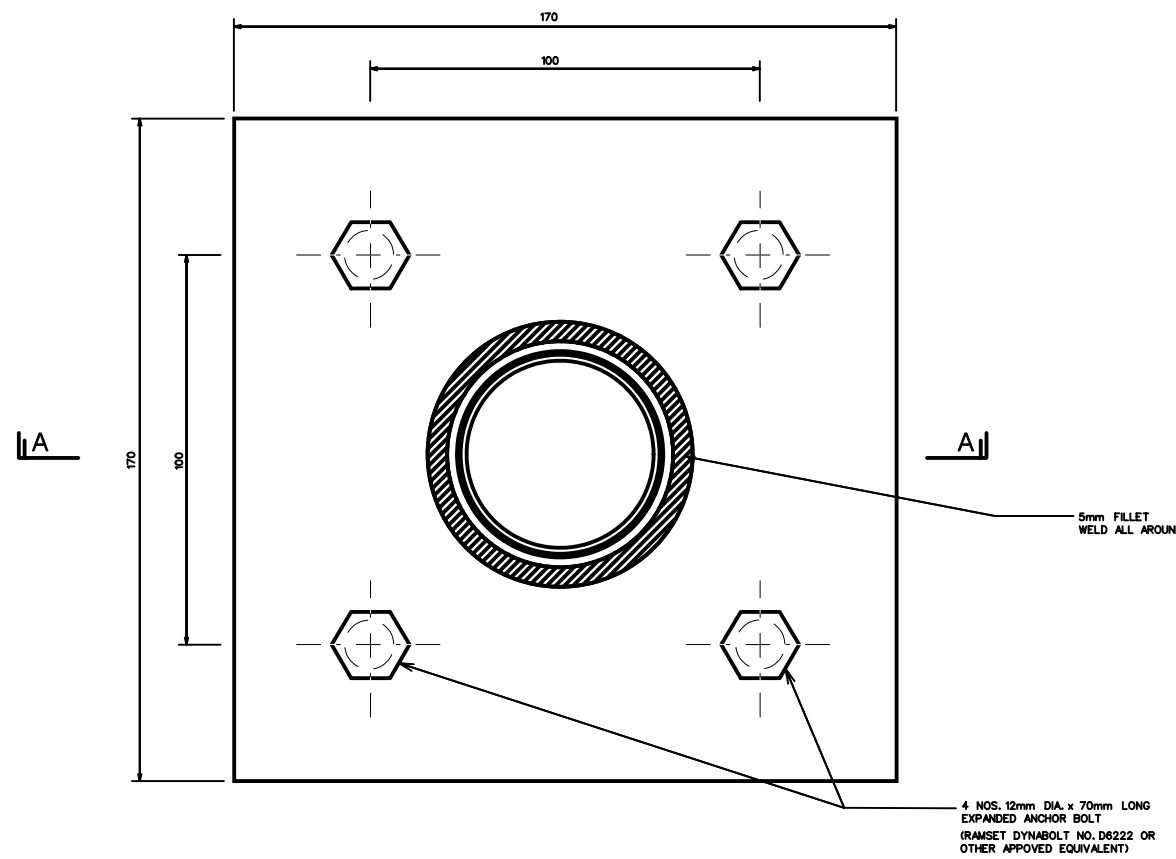
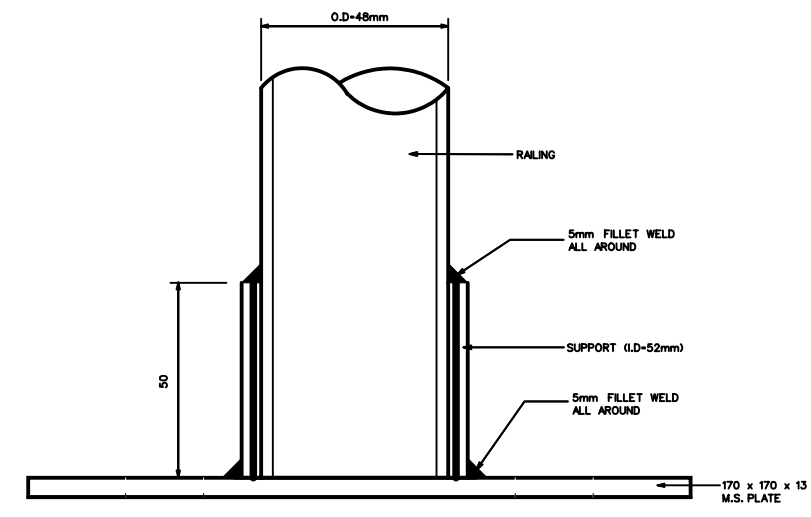


REMOVAL OF EXISTING RAILING
SCALE 1:15




INSTALLATION OF REUSED RAILING
SCALE 1:15



SECTION A - A
DETAILS OF FOOTING
SCALE 1:2

- NOTES:
- PREPARATION
 - SALVAGED RAILING CUT TO REQUIRED HEIGHT
 - RAILING ARE WELDED ONTO THE BASE PLATES
 - ALL WELDING WORKS SHALL BE CARRIED OUT BY QUALIFIED WELDERS TESTED ACCORDING TO B.S. 4872
 - PAINTING
 - ONE COAT OF APPROVED ETCH PRIMER
 - ONE UNDERCOAT OF APPROVED OIL BASED PAINT
 - TWO TOP COATS OF APPROVED OIL BASED PAINT
 - ALL DIMENSIONS ARE IN MILLIMETRES UNLESS OTHERWISE STATED.

REVISION			
1) CHANGE OF DEPARTMENT NAME AND PUB LOGO			
2) CHANGE DRAWING NO. PUB/D/169A/01 TO PUB/BS/D/169B/01			
PREPARED BY :		APPROVED BY :	
POOR S.H. Asst. Director	Date	ORGANIZATION Dy. Director	Date
 PUB Water for All : Conserve, Value, Enjoy BEST SOURCING DEPARTMENT			
STANDARD DRAWING FOR DRAINAGE WORKS			
PROJECT TITLE			
DRAWING TITLE			
REUSE OF SAFETY RAILING (FOR INTERNAL USE ONLY)			
SCALE AS SHOWN			
APPROVED BY	DIRECTOR	YAP K. G.	SIGNED 27-5-04
CHECKED BY	Dy. DIRECTOR	ONG-CHUA S. E.	SIGNED 27-5-04
DESIGNED BY	SENIOR MANAGER	OW P. P.	SIGNED 27-5-04
DRAWN BY	HIGHER TECHNICIAN	NORAIHAH	SIGNED 27-5-04
FILENAME :	ARCHIVED REF :	ARCHIVED BY :	
BSD169B_01.dgn	PUB_STD	YUSOF UMAR	
DRAWING NO. PUB/BS/D/169B/01			