

# HOW TO READ YOUR WATER METER

**BUSINESS/COMMERCIAL  
CUSTOMERS**

## 1 WHY YOU SHOULD READ YOUR WATER METER



### **SAVE WATER, SAVE MONEY**

Track your water usage on your water meter regularly to spot activities which consume the most water.



### **IDENTIFY POTENTIAL LEAKS**

If you notice unusual spikes in water usage, or your meter dial moving when water is not in use, it might suggest a potential leak.



### **TAKE CONTROL OF YOUR WATER BILL**

Submit your meter readings via the SP Utilities app and be billed only for your actual usage every month.

## 2 WHERE TO FIND YOUR WATER METER



Near the main gate or guardhouse area



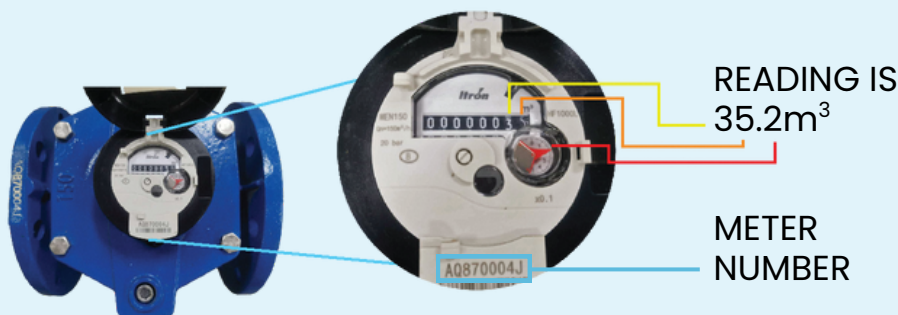
# 3

## HOW TO READ YOUR WATER METER

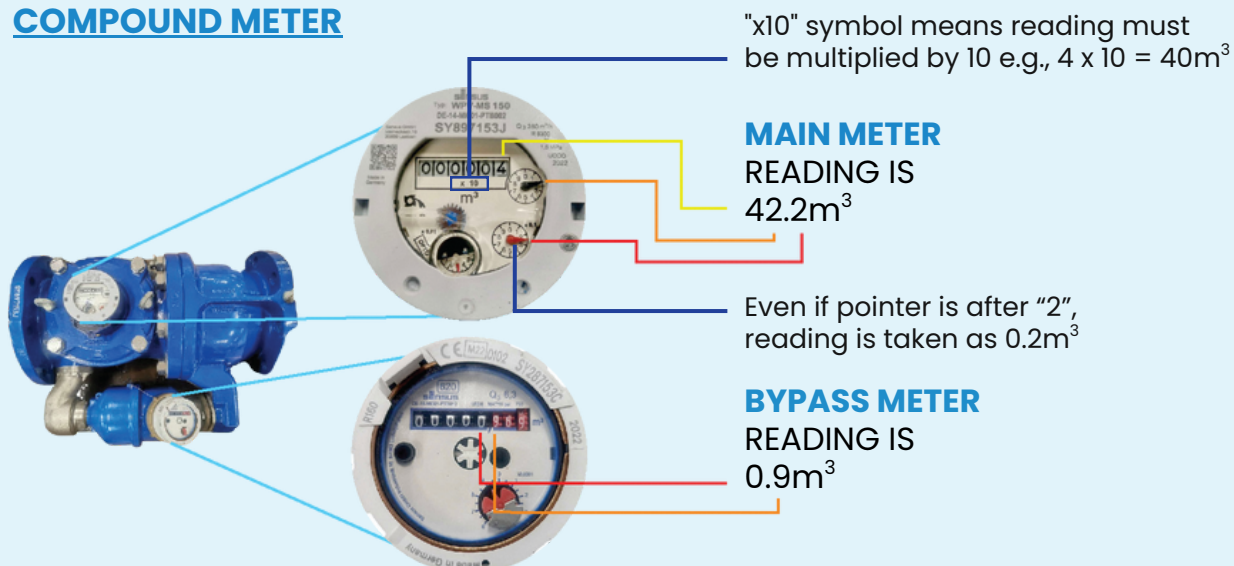
**1. Check the meter number** on your water meter - it should match the number shown on your SP Utilities app.

**2. Read the numbers on the meter dial from left to right on your meter display.** Black or white digits show whole numbers, while red digits/pointers show decimal places. Your water usage is shown in cubic metres (m<sup>3</sup>). Take the reading up to the first decimal place.

### SINGLE METER



### COMPOUND METER



Readings to be submitted:

- **Main Meter:** 42.2m<sup>3</sup>
- **Bypass Meter:** 0.9m<sup>3</sup>

**3. Submit your meter readings** on the SP Utilities app according to the submission period for your premises indicated on the app.

Refer to the Meter Reading sections of the SP Utilities Portal or SP Utilities app for information on the submission period.

SCAN QR CODE  
TO ACCESS SP PORTAL

