

HOW TO READ YOUR WATER METER

RESIDENTIAL CUSTOMERS

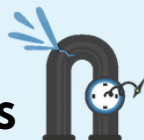
1 WHY YOU SHOULD READ YOUR WATER METER

SAVE WATER, SAVE MONEY



Track your water usage on your water meter regularly to spot activities which consume the most water.

IDENTIFY POTENTIAL LEAKS



If you notice unusual spikes in water usage, or your meter dial moving when water is not in use, it might suggest a potential leak.

TAKE CONTROL OF YOUR WATER BILL



Submit your meter readings via the SP Utilities app and be billed only for your actual usage every month.

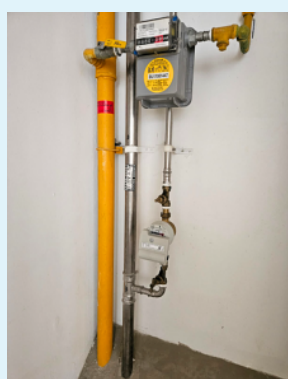
2 WHERE TO FIND YOUR WATER METER



Along the common corridor near the unit's entrance (either exposed or within a utility duct) or at the staircase landing below the unit



Common utility duct



Near the gatepost/entrance within a utility duct

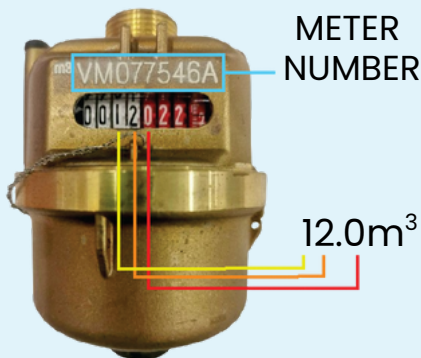


3

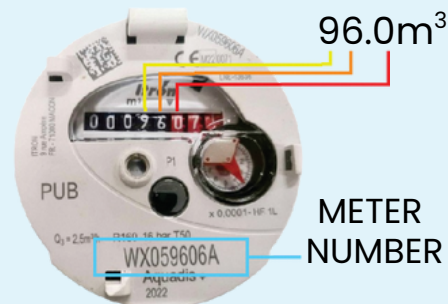
HOW TO READ YOUR WATER METER

1. Check the meter number on your water meter – it should match the number shown on your SP Utilities app.

2. Read the numbers on the meter dial from left to right on your meter display. Black or white digits show whole numbers, while red digits show decimal places. Your water usage is shown in cubic metres (m^3). Take the reading up to the first decimal place.



Reading to be submitted:
12.0m³



Reading to be submitted:
96.0m³

3. Submit your meter readings on the SP Utilities app according to the submission period for your premises indicated on the app.

Refer to the Meter Reading sections of the SP Utilities Portal or SP Utilities app for information on the submission period.

SCAN QR CODE
TO ACCESS SP PORTAL

