



Quick Guide to Drainage Development Control Submission (Minor Project)

PLATFORM LEVEL OF DEVELOPMENT

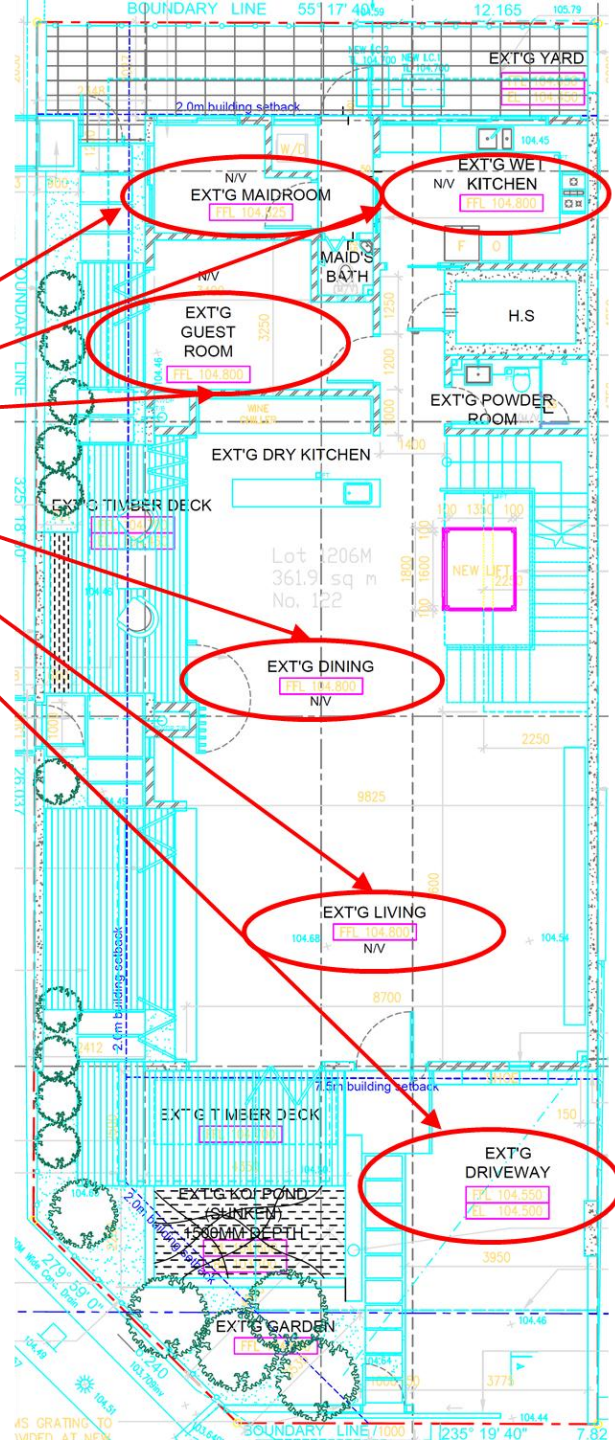
- Please ensure that the minimum platform level shall not be lower than:
 - (i) 104.0 mRL for developments along the southern coast, and 104.5 mRL for developments along the northern coast; or
 - (ii) 300 mm above the adjacent road/ground level; or
 - (iii) 600 mm above the highest recorded flood level, if any, as advised by the Board
 - (iv) any other level specified by the Board whichever is the highest.

- You should indicate the platform level on the 1st Storey Floor Plan

- The road levels shall also be shown on Site & 1st storey plans so that we can take reference at the discharge points of the internal drains



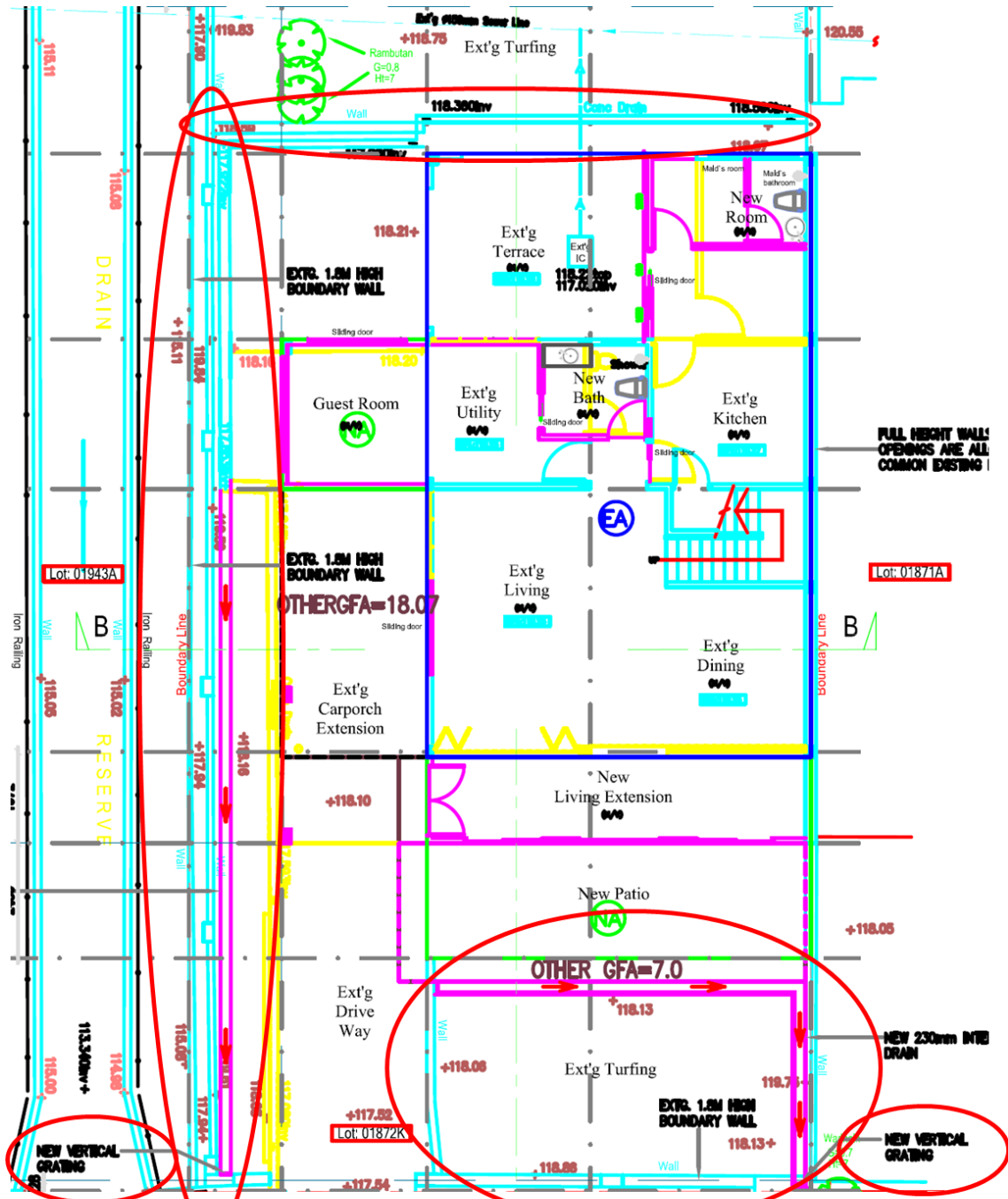
Platform level should be clearly indicated on your drawings



INTERNAL DRAINAGE SYSTEM

- The alignment, type, size, flow direction, summit point and outlet discharge point of the existing/proposed internal drains shall be clearly indicated on the 1st storey plan.
- A vertical grating shall be installed at the outlet discharge point(s) of the internal drain located within the development site. This must be indicated on the 1st storey plan.





DEVELOPMENT WITH ROOF TOP TERRACE/ VOIDS

- All voids which are open to sky shall be clearly edged/outlined in thick line with the annotation 'open to sky' on both the site and 1st storey plans.
- Ensure that rainwater are properly drained off from these voids.



NOTE

- You can also refer to the DC checklist when making a DC submission:-
<http://www.pub.gov.sg/customer/QPPortal/Pages/NewForms.aspx>
- The DC checklist serve as a guideline for QP to understand the key parameters for PUB's evaluation on drainage matter
- Please also note that the Drainage Interpretation Plan (DIP) must be obtained prior to DC stage



DRAINAGE ENDORSEMENT

- Please remember to attach a cover letter together with your submission and
- Endorse the following certifications on plan (as directed in the DC checklist):
 - a) The planning, design, construction activities and procedures for plan submission shall comply fully with the requirements as stipulated in the latest edition of the Code of Practice on Surface Water Drainage and the Sewerage and Drainage (Surface Water Drainage) Regulations 2007.
 - b) The capacity of internal drains shall be sufficient to intercept and discharge all runoff from the development site.
 - c) The runoff within, upstream of and adjacent to the development lot can be effectively drained away without causing flooding within the lot or in areas outside the lot.





Water for All: Conserve, Value, Enjoy

Bought to you by Building Plan Unit, PUB, Singapore's national water agency.