

Hotel Benchmarks



About 85% of water used in a hotel goes to guestrooms, cooling towers, hot water supply system and food & beverage outlets. Water usage pattern may vary depending on the facilities and services provided by the hotel.

Figure 1 below shows a breakdown of overall water usage statistics in the hotel sector.

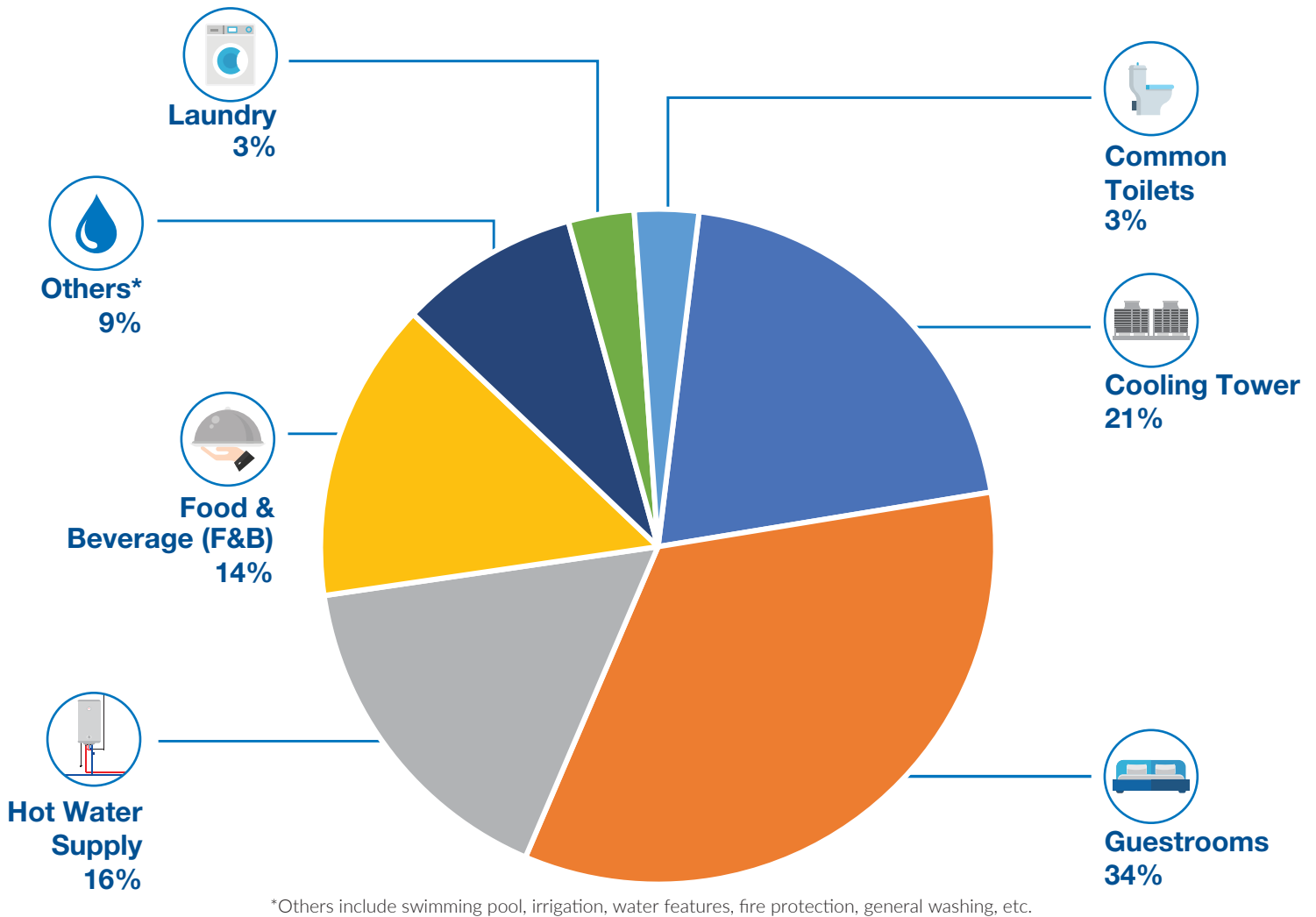


Figure 1: Breakdown of Water Usage for 4 and 5-Star Hotels with Water-Cooled Cooling Towers

The Business Activity Indicators (BAIs) for hotels are the numbers of guestnights annually. Water Efficiency Index (WEI) for hotels is established as:

$$\text{Hotel WEI (m}^3\text{/No. of Guestnights)} = \frac{\text{Annual Water Consumption}}{\text{No. of Guestnights}}$$

4 and 5-star hotels are benchmarked separately to allow for a fair comparison of their respective water usages.

The distribution of WEIs for 4 and 5-star hotels with water-cooled cooling towers are shown in Figure 2 and Figure 3 respectively.

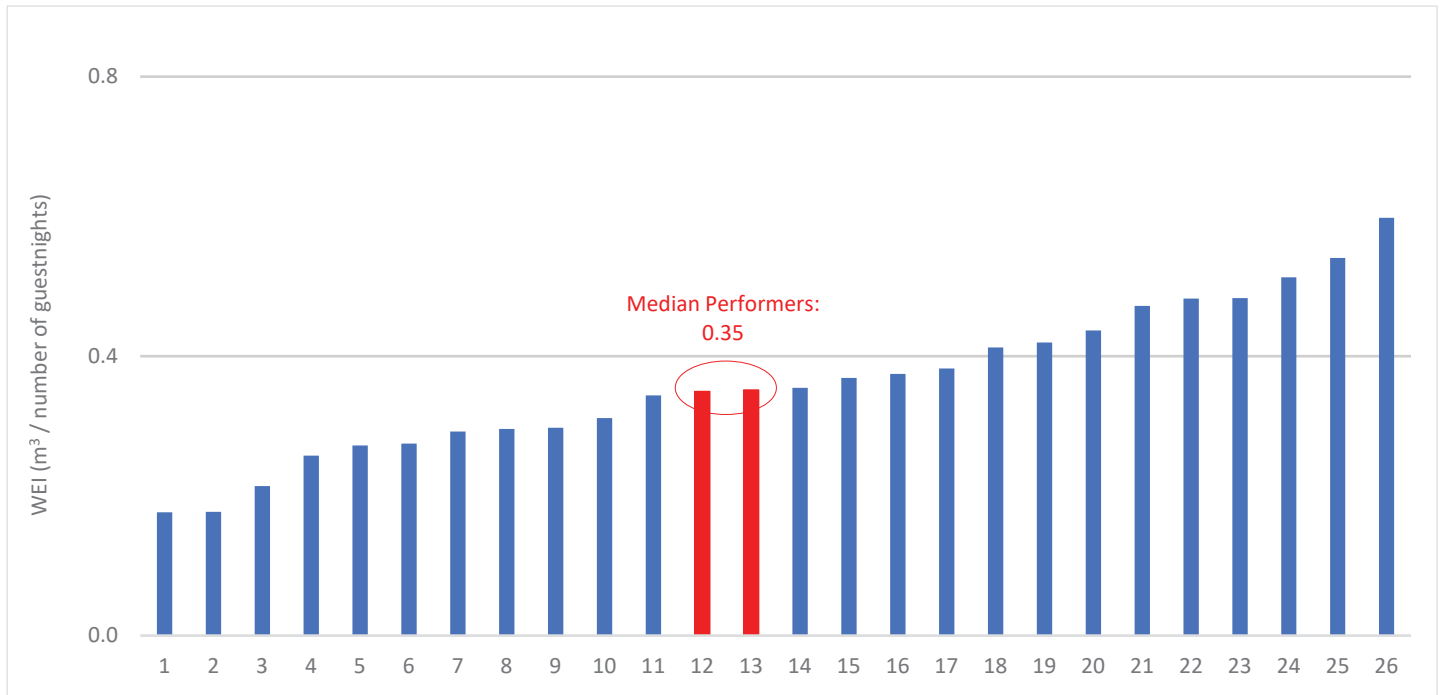


Figure 2: WEI for 4-Star Hotels (Exclude Resort Style) with Water-Cooled Cooling Towers

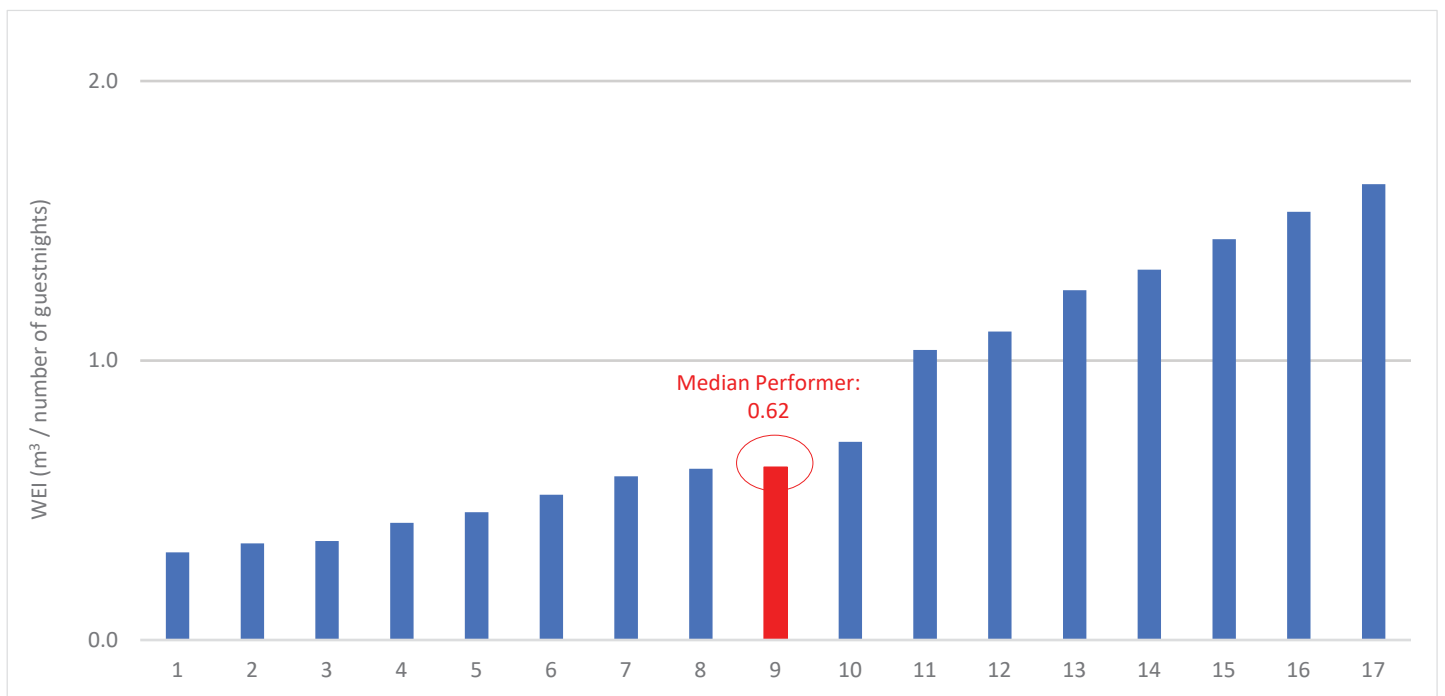


Figure 3: WEI for 5-Star Hotels (Exclude Resort Style) with Water-Cooled Cooling Towers