

USER INSTRUCTIONS FOR SUBMISSION STATUS CHECK

PUB
BUILDING PLAN UNIT

Table of Contents

| | |
|---|-------|
| 1.0 LAUNCH THE SUBMISSION STATUS CHECK PAGE | 1 |
| 2.0 CHECK THE STATUS OF SUBMISSIONS | 2 |
| 3.0 INPUT SUBMISSION NUMBER ONLY | 3 – 6 |
| 4.0 INPUT PROJECT REFERENCE NUMBER ONLY | 7 |
| 5.0 INPUT BOTH SUBMISSION NUMBER AND PROJECT REFERENCE NUMBER | 7 |
| 6.0 INVALID SUBMISSION NUMBER OR PROJECT REFERENCE NUMBER..... | 7 |

1.0 LAUNCH THE SUBMISSION STATUS CHECK PAGE

1.1 Go to <https://www.pub.gov.sg/compliance/qualifiedpersonsportal/eservices> to launch the QP Portal.

1.2 Click on the link below (Figure 1) to launch the submission status check homepage.

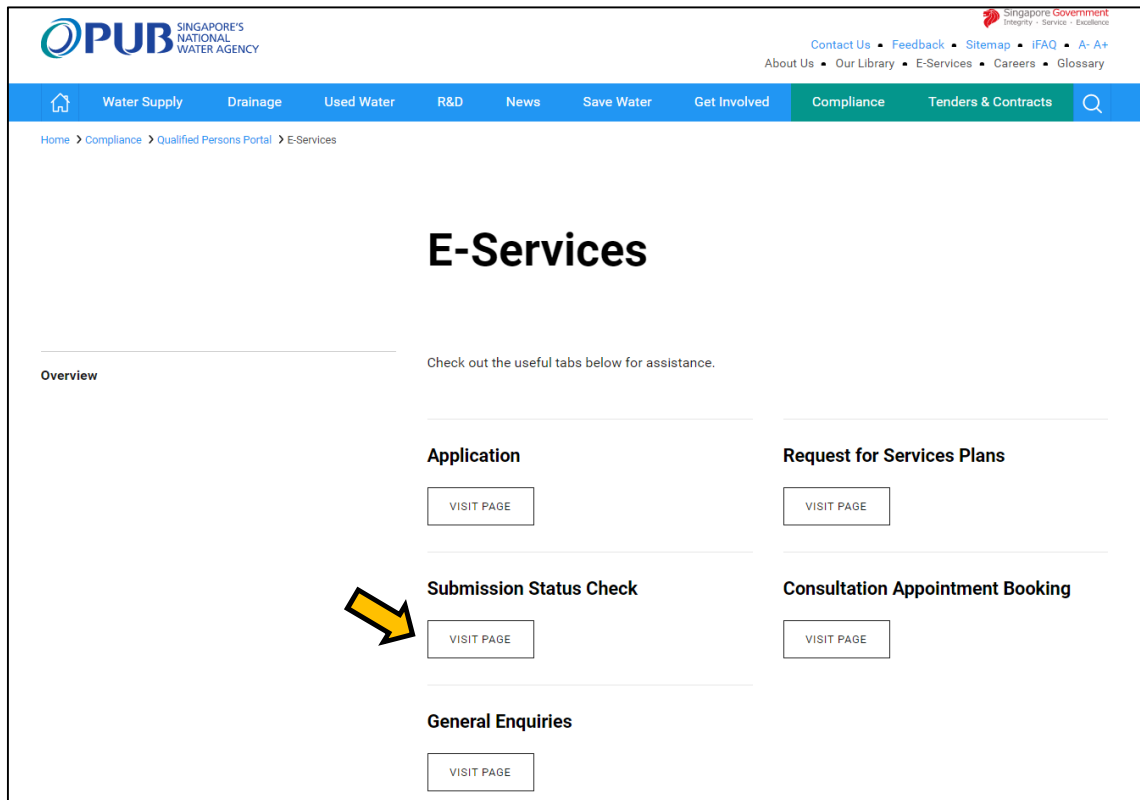


Figure 1: Qualified Persons Portal Homepage

1.3 Please read the instructions before proceeding to check the status of submissions (Figure 2).

PUB SINGAPORE'S NATIONAL WATER AGENCY

Singapore Government
Integrity · Service · Excellence

Contact Us · Feedback · Sitemap · iFAQ · A- A+
About Us · Our Library · E-Services · Careers · Glossary


Home > Compliance > Qualified Persons Portal > E-Services > Submission Status Check

Submission Status Check

Overview

This e-service allows project members (Architects and Professional Engineers) and owners to check the status of all building plan submissions to PUB over the course of the project.

A valid submission number (e.g. ES20150101-12345, CR20150101-12345 for Corenet submissions, 20160101B-12345/00 for E-Form submissions) and/or project reference number (e.g. A1234-12345-2015, E1234-12345-2015 for Corenet submissions, WRNEFORM-123456 for E-Form submissions) is needed to use the service. Click [here](#) for user instructions.

 Click [here](#) to check submission status.

Please call PUB Building Plan Unit hotline at 6731 3512 during office hours between 9am and 5pm for further assistance or email at pub_bpu@pub.gov.sg.

Figure 2: Submission Status Check Homepage

2.0 CHECK THE STATUS OF SUBMISSIONS

2.1 Users can input the relevant Submission Number and/or Project Reference Number to check the status of the submissions (Figure 3).

Submission Status Check

Submission Number: eg. ES20140101-12345, CR20140101-12345

Project Reference Number: eg. A1234-12345-2014, E1234-12345-2014

Figure 3: Submission Status Check Page

| Field | Example(s) |
|--------------------------|--|
| Submission Number | CoreNet ES20150101-12345 CR20150101-12345 E-Forms 20160101B-12345/00 20160101Z-12345/00 20160101E-12345/00 20160101F-12345/00 20160101G-12345/00 20160101H-12345/00 20160101I-12345/00 20160101J-12345/00 |
| Project Reference Number | CoreNet A1234-12345-2015, E1234-12345-2015 E-Forms WRNEFORM-123456 |

3.0 INPUT SUBMISSION NUMBER ONLY

- 3.1 Please enter a valid Submission Number. Click Submit.
- 3.2 For Submission Number with exact match, system displays Submission Details page (Figure 4).
- 3.3 For Submission Number with CR, system displays list of submissions with the same Submission Number (Figure 5). Upon clicking the specific Submission Number, system displays Submission Details page (Figure 4).

Submission Status Check

Project Reference No: A623-01312-2013

ES Number: ES20140416-92752

Submission Number: CR20140416-17878

Project Title: PROPOSED ERECTION OF A 3-STOREY DETACHED DWELLING HOUSE WITH A BASEMENT, ATTIC AND LIFT ON LOT 03140T MK 22 AT 5 AROOZOO AVENUE (HOUGANG PLANNING AREA)

Location Description: Mukim 22 Lot03140T, AROOZOO AVENUE

Submission Type: Development Control , Major

Submission Details:

| Section | Status |
|------------------------------------|--|
| SECTION B: DRAINAGE WORK | ■ Processing |
| SECTION A: SANITARY/ SEWERAGE WORK | ■ Processing |

Overall Status: Processing

Submission Date: 01/01/2014

Expected Date of Reply: 30/01/2014

Date of Reply:

Processing Officer:

| Name | Phone | Email | Scope |
|------|--------------|----------------------------|---------------|
| Bong | +65 97979797 | chunhian@simulation.com.sg | Drainage Work |
| Bong | +65 97979797 | chunhian@simulation.com.sg | |

[Project Overview](#)

All queries on submissions may be made through a hotline **+65 6731 3512** or email (pub_bp@pub.gov.sg). Please call hotline only during office hours between 9am to 5pm.

Figure 4: Submission Details Page

Submission Status Check

Project Reference No: A623-01312-2013

ES Number: ES20140416-92752

Project Description: PROPOSED ERECTION OF A 3-STOREY DETACHED DWELLING HOUSE WITH A BASEMENT, ATTIC AND LIFT ON LOT 03140T MK 22 AT 5 AROOZOO AVENUE (HOUGANG PLANNING AREA)

Please select a submission to view details.

| Submission No. | Status | Received Date | Replied Date |
|------------------|------------|---------------|--------------|
| ES20140416-92752 | Processing | 16/04/2014 | |
| CR20140416-17878 | Processing | 01/01/2014 | |

All queries on submissions may be made through a hotline **+65 6731 3512** or email (pub_bp@pub.gov.sg). Please call hotline only during office hours between 9am to 5pm.

Figure 5: Submission Number with multiple submissions

Details of the fields shown in Figure 4 can be found in the table below.

| Field | Details | | | | | | | | |
|---|--|----------------------------|----------------|------------|------------|---|--------------------------------|---------------------------------------|---------------------------|
| Project Reference Number | BCA Project Reference Number (e.g. A1234-12345-2010) E-Forms Project Reference Number (WRNEFORM-123456) | | | | | | | | |
| ES Number | First Corenet submission of a particular submission type (e.g. ES20150101-12345) | | | | | | | | |
| Submission Number | Subsequent Corenet submission of the same submission type (e.g. CR20150101-12345) | | | | | | | | |
| E-Forms Number | First submission: 20160101B-12345/00 Subsequent submission: 20160101B-12345/02 | | | | | | | | |
| Project Title | Title of project as issued by BCA | | | | | | | | |
| Location Description | Project Site Location (e.g. MK01-12345A, 40 Scotts Road, Singapore 228231) | | | | | | | | |
| Submission Type | Displays the type of submission made (e.g. Development Control, PUB CSC Clearance for Drainage/Sewerage) | | | | | | | | |
| Submission Details – Section | Displays the sub-sections of a particular application (e.g. Section A: Sanitary/Sewerage Work, Section B: Drainage Work) | | | | | | | | |
| Submission Details – Status | Displays the status of the sub-sections in a particular submission (e.g. Processing, Replied with Written Direction, Replied with No Objection) | | | | | | | | |
| Overall Status | Displays the overall status of submission with multiple sub-sections: <table border="1" data-bbox="669 1205 1357 1394"> <thead> <tr> <th>Status of Any Sub-sections</th> <th>Overall Status</th> </tr> </thead> <tbody> <tr> <td>Processing</td> <td>Processing</td> </tr> <tr> <td>No Processing Replied with Written Direction</td> <td>Replied with Written Direction</td> </tr> <tr> <td>No Processing No Written Direction</td> <td>Replied with No Objection</td> </tr> </tbody> </table> | Status of Any Sub-sections | Overall Status | Processing | Processing | No Processing Replied with Written Direction | Replied with Written Direction | No Processing No Written Direction | Replied with No Objection |
| Status of Any Sub-sections | Overall Status | | | | | | | | |
| Processing | Processing | | | | | | | | |
| No Processing Replied with Written Direction | Replied with Written Direction | | | | | | | | |
| No Processing No Written Direction | Replied with No Objection | | | | | | | | |
| Submission Date | Date of submission made by QP via Corenet (DD/MM/YYYY) | | | | | | | | |
| Expected Date of Reply | Expected date of reply by PUB officer based on the respective service standards indicated here . | | | | | | | | |

3.4 Upon clicking the 'Project Overview' button, system displays the Project Overview Page with the matching Project Reference Number (Figure 6).

Submission Status Check

Project Ref./BP No: A623-01312-2013

Project Description: PROPOSED ERECTION OF 15 UNITS OF ENVELOPE CONTROL TERRACE DWELLING HOUSES INCLUDING 9 INTERMEDIATE AND 6 CORNER UNITS ON LOT 03363X MK19 AT WAK HASSAN PLACE AND WAK HASSAN DRIVE

Location Description: Mukim 19 Lot03363X, WAK HASSAN DRIVE, Singapore 000000, WAK HASSAN PLACE, WAK HASSAN DRIVE

⏏ Expand All ⏏ Collapse All

| | | |
|---|---|---|
| Development Control | ■ Processing | ▶ |
| Pre-consultation /Waiver application form on Drainage matters | ■ Processing | ▶ |
| Pre-consultation /Waiver application form on Sewerage matters | ■ Force Closed | ▶ |
| Detailed Plan (Sanitary Work) | ■ Replied with No Objections | ▶ |
| Detailed Plan (Sewerage Work, RC Trench) | ■ Replied with No Objections | ▶ |
| Detailed Plan (Drainage) | ■ Replied with No Objections | ▶ |
| Application for Work in Public Sewerage System Form B | ■ Processing | ▶ |
| Notice for Carrying out Sewer Connection Work Form B1 | | ▶ |
| Application for Approval of Works Affecting Public Sewerage System | ■ Processing | ▶ |
| End of Defects Liability Period Inspection for Public Sewers | ■ Processing | ▶ |
| PUB TOP Clearance for Sewerage Work | ■ No submissions made | ▶ |
| PUB TOP Clearance for Sanitary Work | ■ No submissions made | ▶ |
| PUB TOP Clearance for RC Trench Completion | ■ No submissions made | ▶ |
| PUB TOP Clearance for Infrastructure Works Affecting Sewer | ■ No submissions made | ▶ |
| PUB CSC Clearance for Sanitary and Sewerage Works | ■ No submissions made | ▶ |
| PUB CSC Clearance for Drainage | ■ Processing | ▶ |
| Pre-Planning Consultation - Water | ■ No submissions made | ▶ |
| Notification of Water Service Work By Professional Engineer | ■ No submissions made | ▶ |
| Certificate of Satisfactory Completion of Water Service Work By Professional Engineer | ■ No submissions made | ▶ |

All queries on submissions may be made through a hotline +65 6731 3512 or email (pnb_bpu@pub.gov.sg). Please call hotline only during office hours between 9am to 5pm.

Figure 6: Project Overview Page

| Field | Details |
|--|--|
| Project Reference Number | BCA Project Reference Number (e.g. A1234-12345-2010) |
| Project Description | Title of project as issued by BCA |
| Location Description | Project Site Location (e.g. MK01-12345A, 40 Scotts Road, Singapore 228231) |
| Submission Status Check Stages (Figure 7) | Displays the status of different types of submissions made by QP for a particular project. |

| | | |
|---|--|---|
| Development Control | ■ Replied with no objections | ▶ |
| Pre-consultation /Waiver application form on Drainage matters | ■ No submission made | ▶ |
| Pre-consultation /Waiver application form on Sewerage matters | ■ Replied with no objections | ▶ |
| Detailed Plan (Sanitary Work) | ■ Replied with no objections | ▶ |
| Detailed Plan (Sewerage Work, RC Trench) | ■ Replied with written directions | ▶ |
| Detailed Plan (Drainage)) | ■ No submission made | ▶ |
| Application for Work in Public Sewerage System Form B | ■ No submission made | ▶ |
| Notice for Carrying out Sewer Connection Work Form B1 | ■ No submission made | ▶ |
| Application for Approval of Works Affecting Public Sewerage System | ■ No submission made | ▶ |
| End of Defects Liability Period Inspection for Public Sewers | ■ No submission made | ▶ |
| PUB TOP Clearance for Sewerage Work | ■ Processing | ▶ |
| PUB TOP Clearance for Sanitary Work | ■ No submission made | ▶ |
| PUB TOP Clearance for RC Trench Completion | ■ No submission made | ▶ |
| PUB TOP Clearance for Infrastructure Works Affecting Sewer | ■ No submission made | ▶ |
| PUB CSC Clearance for Sanitary and Sewerage Works | ■ No submission made | ▶ |
| PUB CSC Clearance for Drainage | ■ No submission made | ▶ |
| Pre-Planning Consultation - Water | ■ No submission made | ▶ |
| Notification of Water Service Work By Professional Engineer | ■ No submission made | ▶ |
| Certificate of Satisfactory Completion of Water Service Work By Professional Engineer | ■ No submission made | ▶ |

Figure 7: Submission Status Check Stages

3.5 Click on a relevant submission stage. System will display all the submissions made by QP for that particular stage (Figure 8). Click on a specific Submission Number.

| End of Defects Liability Period Inspection for Public Sewers | ■ No submission made | ▶ | | | |
|--|--|-----------------|------------------------|---------------|------------|
| PUB TOP Clearance for Sewerage Work | ■ Processing | ▼ | | | |
| ES No. | Submission No. | Submission Date | Expected Date of Reply | Date of Reply | Status |
| ES20150402-83327 | ES20150402-83327 | 09/04/2015 | 24/04/2015 | | Processing |

Figure 8: Details of Submissions for a Particular Submission Stage

3.6 Upon clicking on the specific Submission Number, system displays Submission Details page (Figure 4).

4.0 INPUT PROJECT REFERENCE NUMBER ONLY

- 4.1 Please enter a valid Project Reference Number. Click Submit.
- 4.2 Upon clicking Submit, system displays the Project Overview Page (Figure 6) for the stated Project Reference Number.

5.0 INPUT BOTH SUBMISSION NUMBER AND PROJECT REFERENCE NUMBER

- 5.1 Please enter a matching Submission Number and Project Reference Number. Click Submit.
- 5.2 For Submission Number with exact match, system displays the Submission Details page (Figure 4).
- 5.3 For Submission Number with CR, system displays list of submissions with the same Submission Number (Figure 5). Upon clicking the specific Submission Number, system displays Submission Details page (Figure 4).

6.0 INVALID SUBMISSION NUMBER OR PROJECT REFERENCE NUMBER

- 6.1 For invalid Submission Number or Project Reference Number, system displays the following messages (Figures 9 – 11):

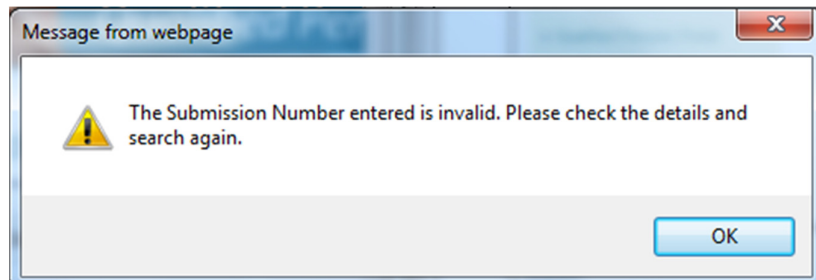


Figure 9: Invalid Submission Number

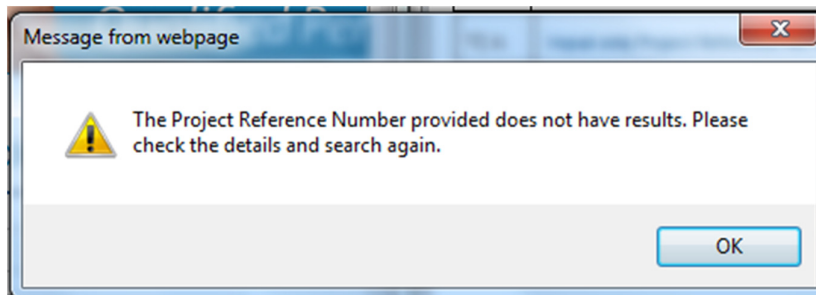


Figure 10: Invalid Project Reference Number

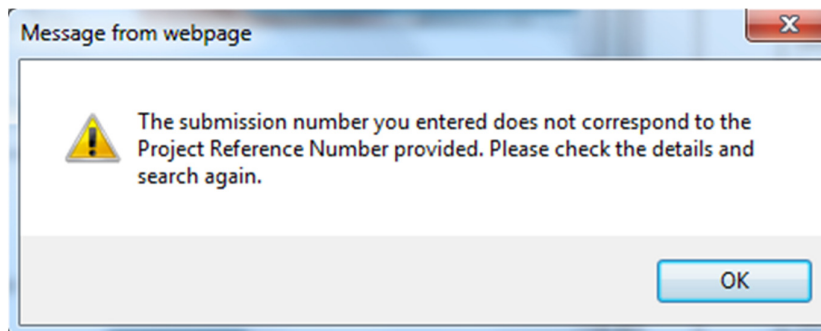


Figure 11: Submission and Project Reference Number do not match