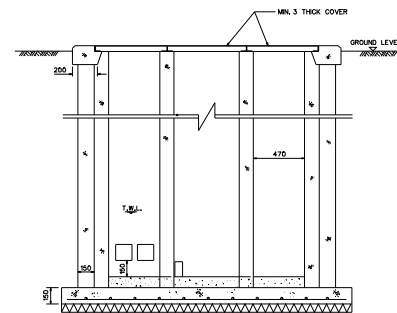
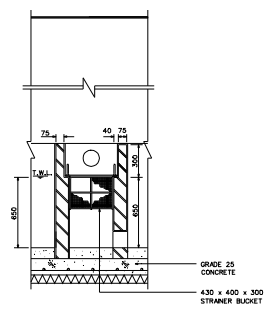


SECTION B-B



SECTION C-C



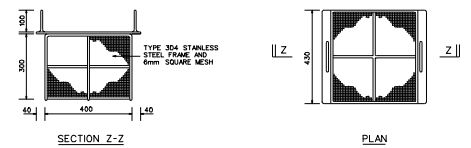
SECTION D-D



SECTION X-X

SECTION Y-Y

SCALE 1 : 10

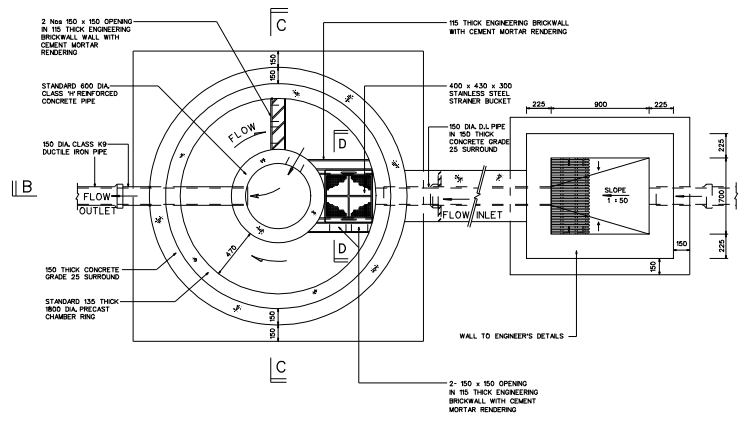


SECTION Z-Z

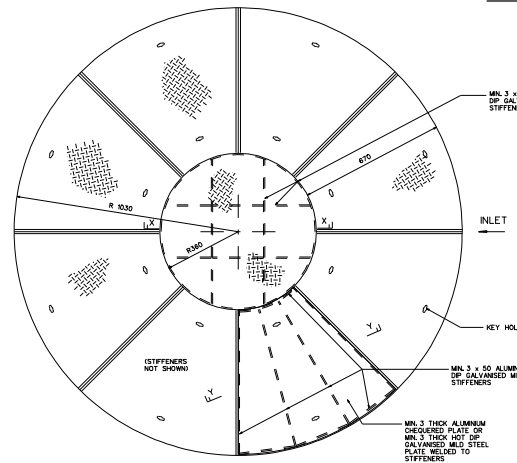
PLAN

DETAILS OF STAINLESS STEEL STRAINER BUCKET

SCALE 1 : 10

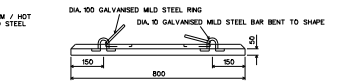


SECTIONAL PLAN A-A



PLAN VIEW OF ALUMINIUM CHEQUERED PLATE COVER

SCALE 1 : 10



DETAILS OF PRECAST COVER SLAB WITH LIFTING RING

SCALE 1 : 10

NOTES

- BOTH ALUMINIUM CHEQUERED PLATE AND HOT DIP GALVANISED MILD STEEL CAN BE USED TO FABRICATE THE GREASE TRAP COVER, HOWEVER BOTH THE COVER AND STIFFENERS MUST BE OF THE SAME MATERIAL. THE MILD STEEL COVER MUST ONLY BE GALVANISED AFTER THE STIFFENERS ARE WELDED TO THE COVER.
- IF THE CIRCULAR GREASE TRAP IS TO BE SITED ON AREA WHERE IT IS SUBJECTED TO VEHICULAR LOADING, THE STRUCTURAL DESIGN OF THE GREASE TRAP WILL HAVE TO BE CARRIED OUT BY PROFESSIONAL ENGINEER.
- INFLOW TO THE GREASE TRAP SHALL BE FROM COVERED AREA I.e. NO RAIN WATER IS TO BE DISCHARGED INTO THE GREASE TRAP.
- THE OWNER/DEVELOPER SHOULD MAINTAIN THE GREASE TRAP REGULARLY SO AS TO ENSURE THAT NO GREASE OR OIL IS DISCHARGED INTO THE SEWER.
- OIL, GREASE, SLUDGE ETC. COLLECTED IN THE GREASE TRAP SHALL BE REMOVED AND DISPOSED OF IN A MANNER ACCEPTABLE TO THE COMPETENT AUTHORITIES.
- SCREENINGS SHALL BE REMOVED BY EMPTYING THE STRAINER DAILY AND DISPOSED OF IN A MANNER ACCEPTABLE TO THE COMPETENT AUTHORITIES.

ISSUED BY WATER RECLAMATION (NETWORK) DEPARTMENT ON APR '05

SCALES
1 : 20
UNLESS
OTHERWISE
STATED

STANDARD CIRCULAR GREASE TRAP FOR
CANTEENS, RESTAURANTS & EATING STALLS