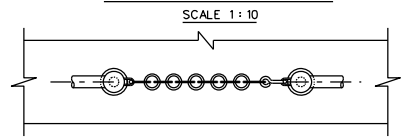


PLAN B - B SIDE ELEVATION B - B

DETAIL OF BASE OF STANDARD (VERTICAL MOUNTING)

SCALE 1:2

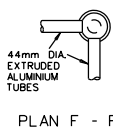
OPENING FOR ACCESS



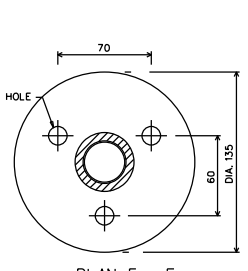
SIDE ELEVATION

ANGLE STANDARD SCALE 1:10

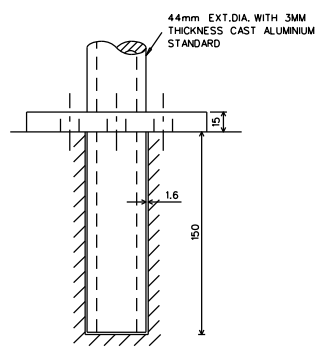
DETACHABLE STANDARD SCALE 1:10



PLAN F - F



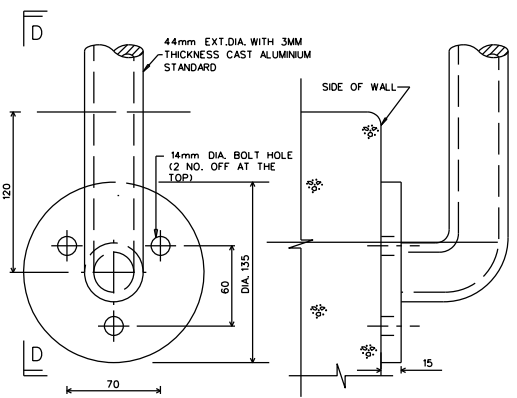
PLAN E - E



SIDE ELEVATION E - E

DETAIL OF BASE OF DETACHABLE STANDARD

SCALE 1:2

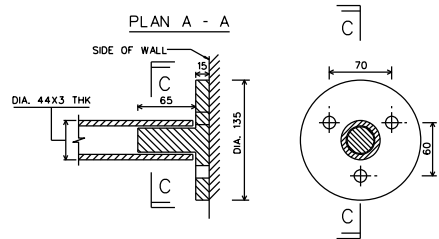


FRONT ELEVATION

SIDE ELEVATION D - D

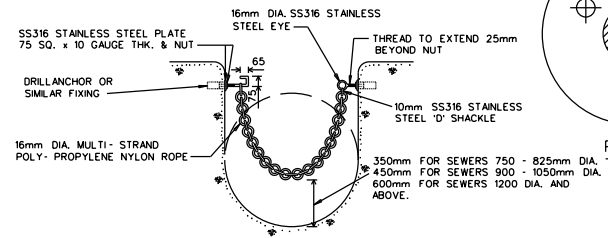
DETAIL OF BASE OF STANDARD (SIDE MOUNTING)

SCALE 1:2



SECTION C - C

ELEVATION C - C

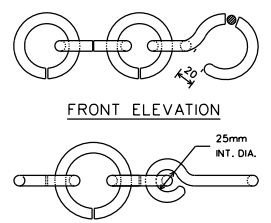


ARRANGEMENT OF SAFETY CHAIN FOR MAIN SEWER IN MANHOLE

SCALE 1:20

DETAIL OF BRACKET (WALL ATTACHMENT)

SCALE 1:3

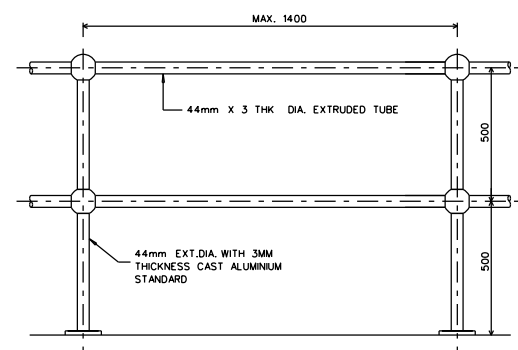


FRONT ELEVATION

PLAN

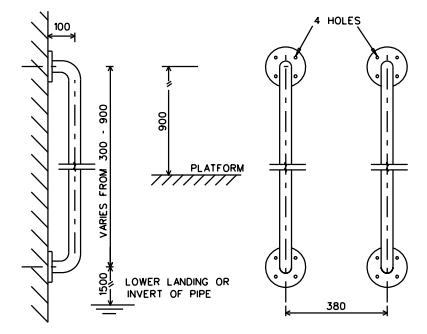
DETAIL OF 50mm INT. DIA. RING AND HOOK

SCALE 1:3



TYPICAL HANDRAIL ARRANGEMENT

SCALE 1:10



SIDE ELEVATION

FRONT ELEVATION

DETAIL OF HANDHOLD

SCALE 1:10

NOTES :-

1. THE ALUMINIUM ALLOY SHALL BE 6082. THE FORM OF MATERIAL FOR THE RAILS SHALL BE TO EN 573, AND FOR THE STANDARDS SHALL BE TO EN 755.
2. WELDS TO BE OF A STRUCTURAL TYPE MADE BY APPROVED WELDING TECHNIQUE TO GIVE SOUND, STRONG WELDS WITH A MINIMUM DIMENSION NOT LESS THAN THE THICKNESS OF THE JOINING MEMBERS.
3. FIXING TO HANDRAILS TO BE MADE WITH ALUMINIUM SHALY RAGBOLTS, BOLTS AND NUTS.
4. ALUMINIUM SURFACE IN CONNECTION WITH CONCRETE SHALL HAVE AT LEAST TWO COATINGS OF HEAVY-DUTY BITUMINOUS PAINT OR OTHER SEPARATING MATERIAL.
5. DIAMETER OF SS316 STAINLESS STEEL RAGBOLTS TO BE 13MM. THE RAGBOLT SHOULD BE EMBEDDED SUCH THAT THE SHANK PROTRUDES NOT MORE THAN TWO THREADS BEYOND THE HEAD OF THE NUT. RUBBER SEPARATOR SHALL BE PLACED BETWEEN THE BOLT AND THE ALUMINIUM BASE PLATE.
6. CONNECTION DETAILS
 a) FILLET WELD ALL AROUND BETWEEN FENCE POST AND BASE PLATE.
 b) FILLET WELD ALL AROUND BETWEEN JOINTING BALL AND FENCE POST, TOP AND BOTTOM.
 c) RIVETED CONNECTION TO HORIZONTAL GUARDRAIL.
7. ALUMINIUM ALLOY HANDRAIL & SAFETY CHAIN ARE TO BE ANODISED ON BOTH THE INSIDE AND THE OUTSIDE OF THE MEMBER. MINIMUM THICKNESS OF THE ANODIC OXIDE LAYER SHALL BE 20µm.

1) THICKNESS OF MEMBERS ADDED.
2) VERTICAL MOUNTING STANDARD'S BASE DIMENSION REVISED.
3) WALL BRACKET DIMENSION REVISED.
4) STAINLESS STEEL GRADE ADDED.
5) STAINLESS STEEL SAFETY CHAIN REMOVED.
6) BASE OF DETACHABLE STANDARD DIMENSION REVISED.
7) BASE OF STANDARD (SIDE MOUNTING) DIMENSION REVISED.
8) NOTE REVISED.

AMENDMENTS

ISSUED : APR 2005

SCALES

AS SHOWN

LAST REVIEWED : JAN 2019

DETAILS OF ANODISED ALUMINIUM ALLOY HANDRAIL AND SAFETY CHAIN