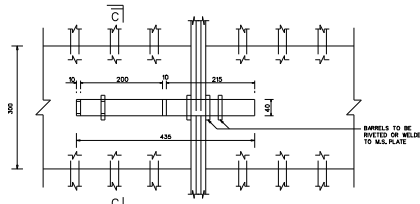
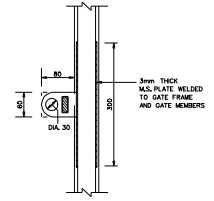


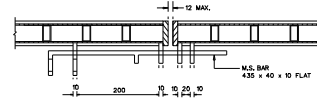
4-METRE WIDE GATE
SCALE 1 : 20



ELEVATION
SCALE 1 : 5



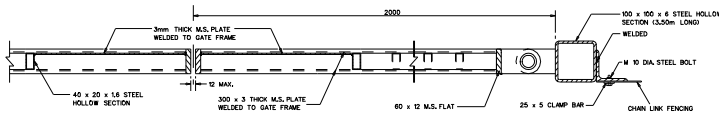
SECTION C-C
SCALE 1 : 5



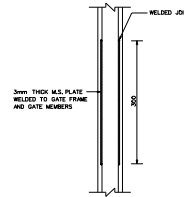
PLAN
DETAIL OF LOCKING DEVICE ARRANGEMENT
SCALE 1 : 5

NOTES:

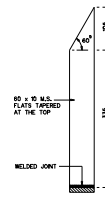
- 25mm x 5mm CLAMP BAR TO BE USED ON ALL STRAINING POSTS AND ALL STEEL MEMBER OF GATE FOR HOLDING DOWN THE WIRE MESH.
- ALL BOLTS, NUTS, STAPLES AND WASHERS SHALL BE PLATED OR COATED WITH STAINLESS METAL.
- THE MILD STEEL GATES AND GATE POSTS SHALL BE GALVANISED AND THEN PRIMED IN THE FACTORY. AFTER ERECTION ON SITE, THE GATES AND THE GATE POSTS SHALL BE PRIMED AGAIN AND PAINTED WITH TWO COATS OF PAINT.
- UNLESS OTHERWISE STATED ALL CONCRETE MIX TO BE GRADE 25 AND ABOVE.
- EXCEPT WHERE OTHERWISE MODIFIED THE GATE SHALL GENERALLY BE IN ACCORDANCE WITH B.S. 1722 PART 10.



SECTION A-A
SCALE 1 : 5



SECTION B-B
SCALE 1 : 5



SECTION D-D
SCALE 1 : 5