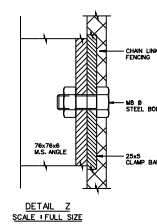
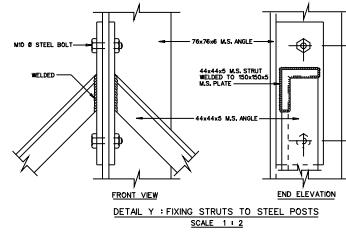
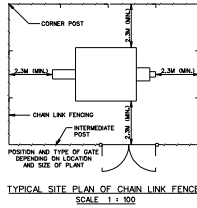
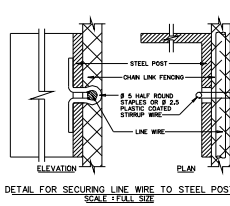


**PLASTIC COATED GALVANISED WIRE CHAIN LINK FENCING**

	OUTSIDE DIA. (mm)	CORE DIA. (mm)
CHAIN LINK FENCING	4.75	3.56
LINE WIRE	4.75	3.56
STIRRUP WIRE	5.00	2.60
TYING WIRE	2.50	1.40



**NOTES:**

- EXCEPT WHERE OTHERWISE MODIFIED THE CHAIN LINK FENCING SHALL GENERALLY BE IN ACCORDANCE WITH SLS 752 PART 20 AND SLS 450.
- THE CHAIN LINK FENCING SHALL BE OF 2.4m HIGH WIRE MESH TO A NET GAUGE OF 330mm DIA AND GALVANISED.
- ALL POSTS SHALL BE SPACED AT NET WIRE + 30mm INTERVALS.
- STRUTTING POSTS SHALL BE SPACED EQUALLY AND PROVIDED AT ALL ENDS AND CORNERS AT CORNERS IN DIRECTION OF FENCING (VARIOUS IN LEVEL AND AT INTERVALS NOT EXCEEDING EVERY 10 METRES IN STRAIGHT LENGTH OF FENCE THAT IS 30 METRES).
- ALL RUSTING STAPLES AND NAILERS SHALL BE PLATED OR COATED WITH STAINLESS METAL.
- LINE WIRE SHALL BE TO A NET GAUGE OF 2.5mm DIA AND GALVANISED.
- THE BARBED WIRE SHALL CONSIST OF 2 PLY DA 2.0mm STEEL WIRE WITH 4 POINT BARBS SPACED AT 75mm APART AND GALVANISED.
- ALL RUSTING STAPLES AND NAILERS SHALL BE PLATED OR COATED WITH STAINLESS METAL.
- CONCRETE TO BE GRADE 25 AND ABOVE UNLESS OTHERWISE SPECIFIED.