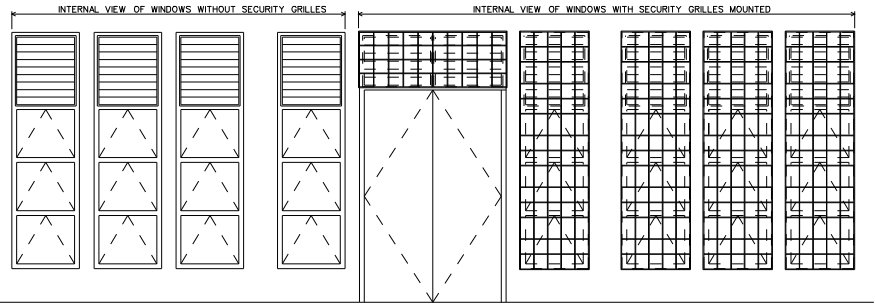
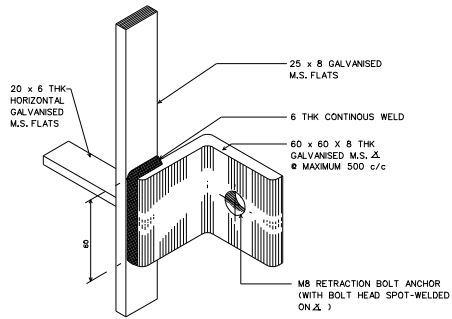


PARTIAL DETAIL ELEVATION



ELEVATION



DETAIL OF WALL FIXING

NOTES:

1. PAINTWORK:-
  - ALL EXPOSED STEEL SURFACES SHALL BE PAINTED AS FOLLOWS OR WITH APPROVED EQUIVALENT
  - (a) ONE COAT OF '101' ETCH PRIMER.
  - (b) ONE COAT OF '101' GREY GREEN CHROMIUM METAL PRIMER FS500-358.
  - (c) ONE COAT OF '101' DULUX SPEED UNDERCOAT A543-01.
  - (d) TWO COATS OF '101' DULUX PAINT A365 LINE OF APPROVED COLOUR.
2. WELDING:-
  - (a) ALL JOINTS SHALL BE WELDED WITH 6mm CONTINUOUS FILLET WELD.
  - (b) QUALIFIED WELDERS SHALL ONLY BE EMPLOYED TO CARRY OUT THE WORK.
3. DIMENSION 'X' SHALL BE 150mm AND 'Y' SHALL APPROXIMATELY BE EQUAL TO 2'X BUT NOT MORE THAN 500mm.
4. WALL SIDE LEG OF ANGLE AND BOLT SHALL BE CONCEALED IN PLASTER/TILE.