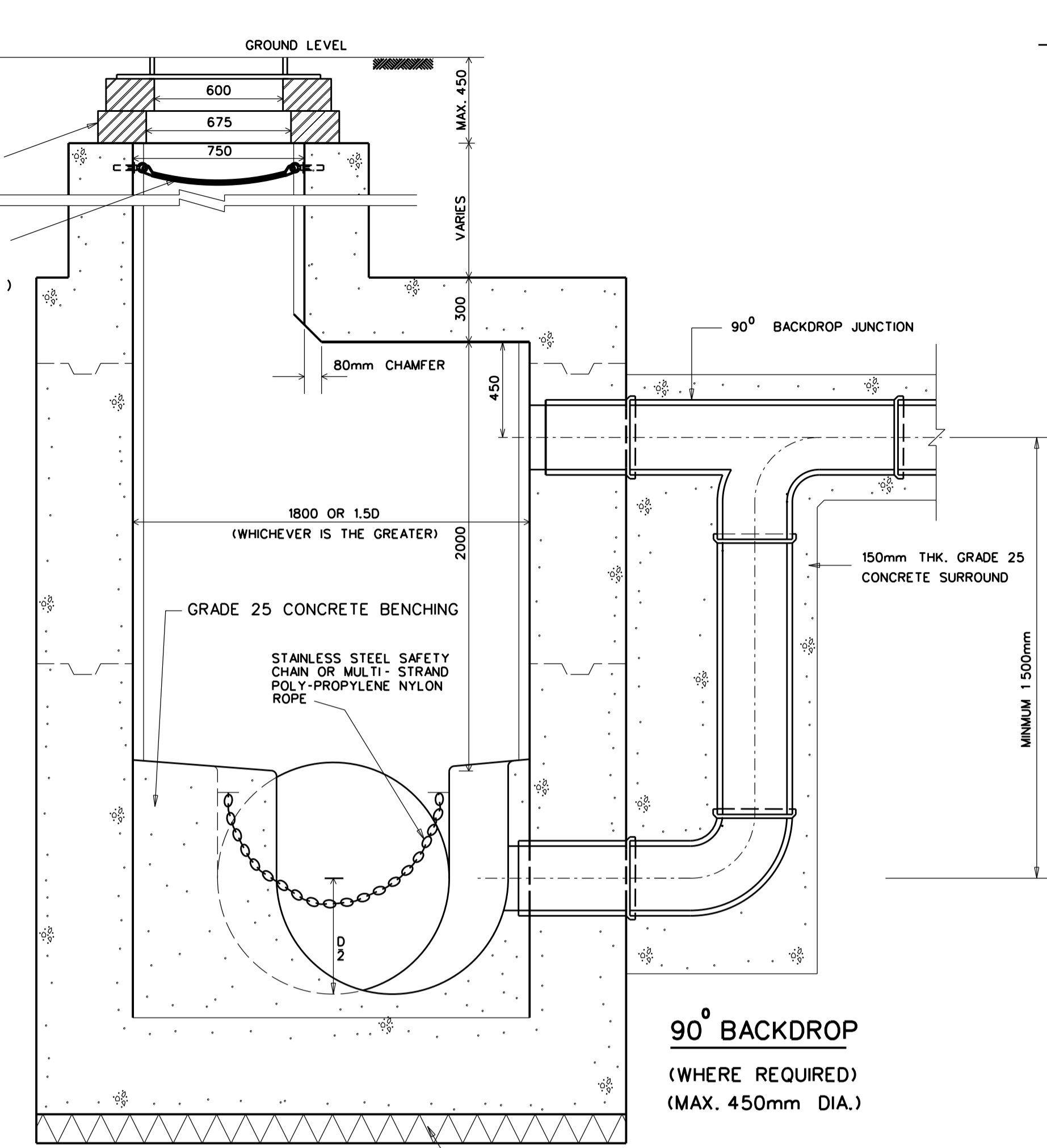
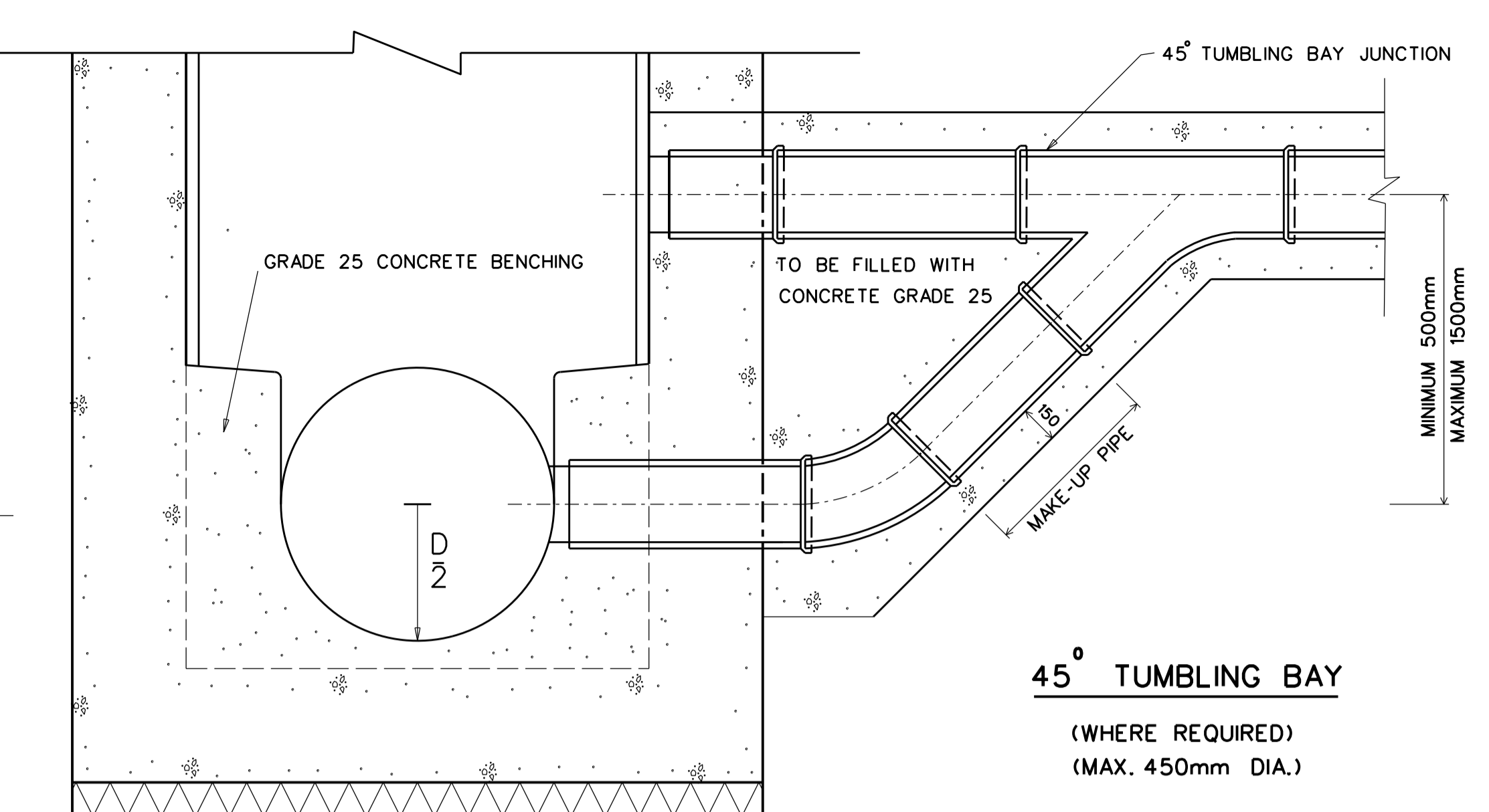


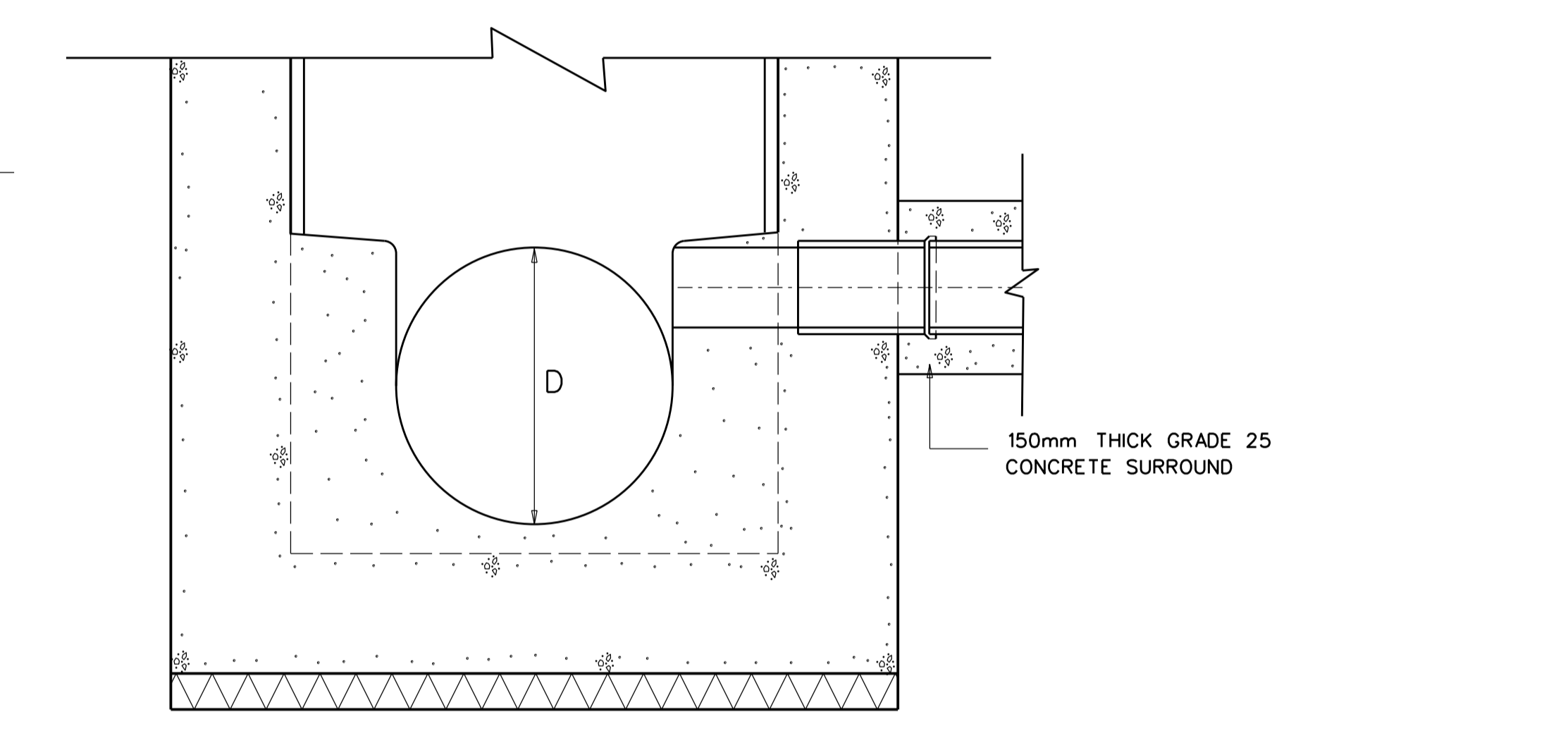
SECTION A-A



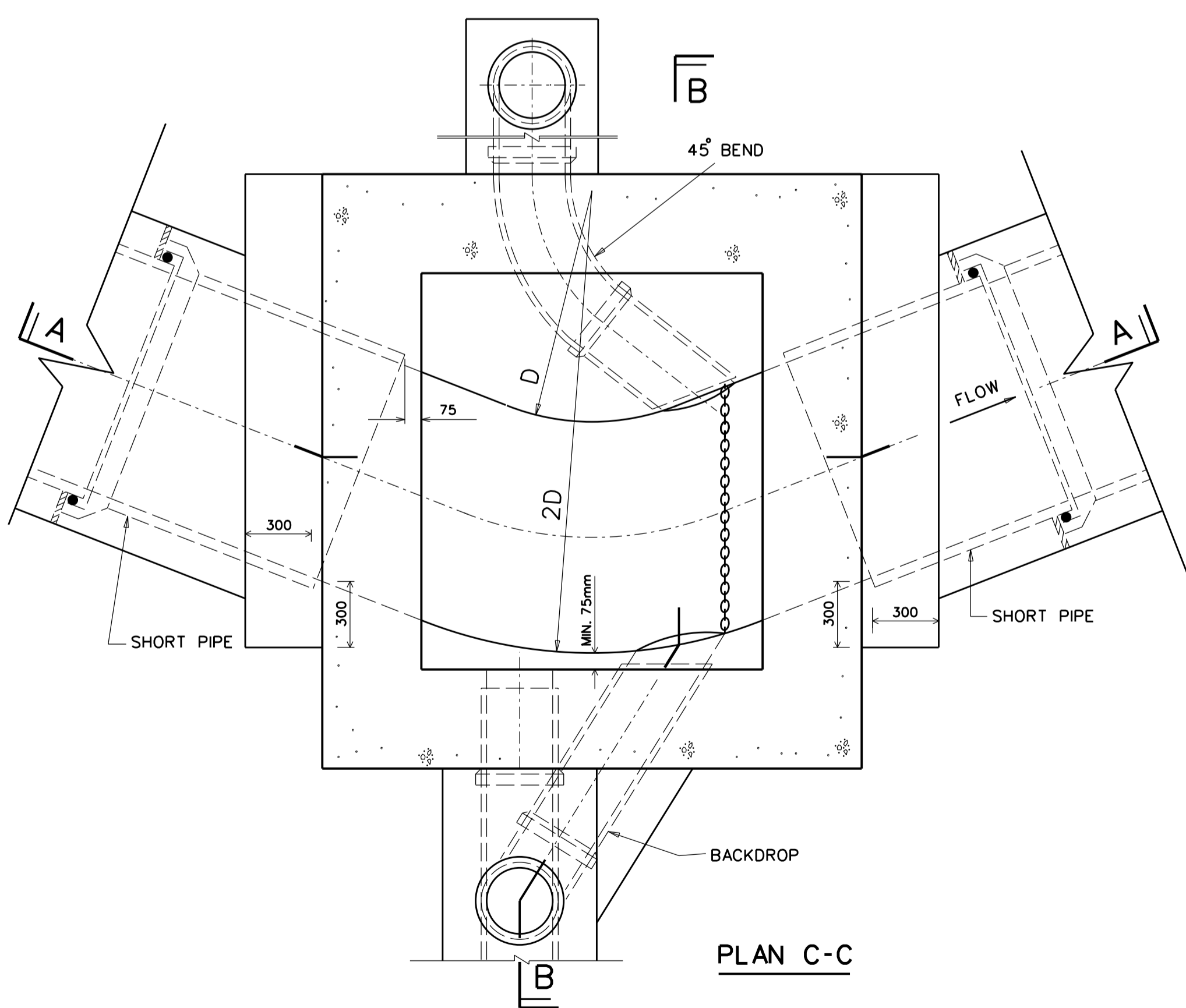
SECTION B-B



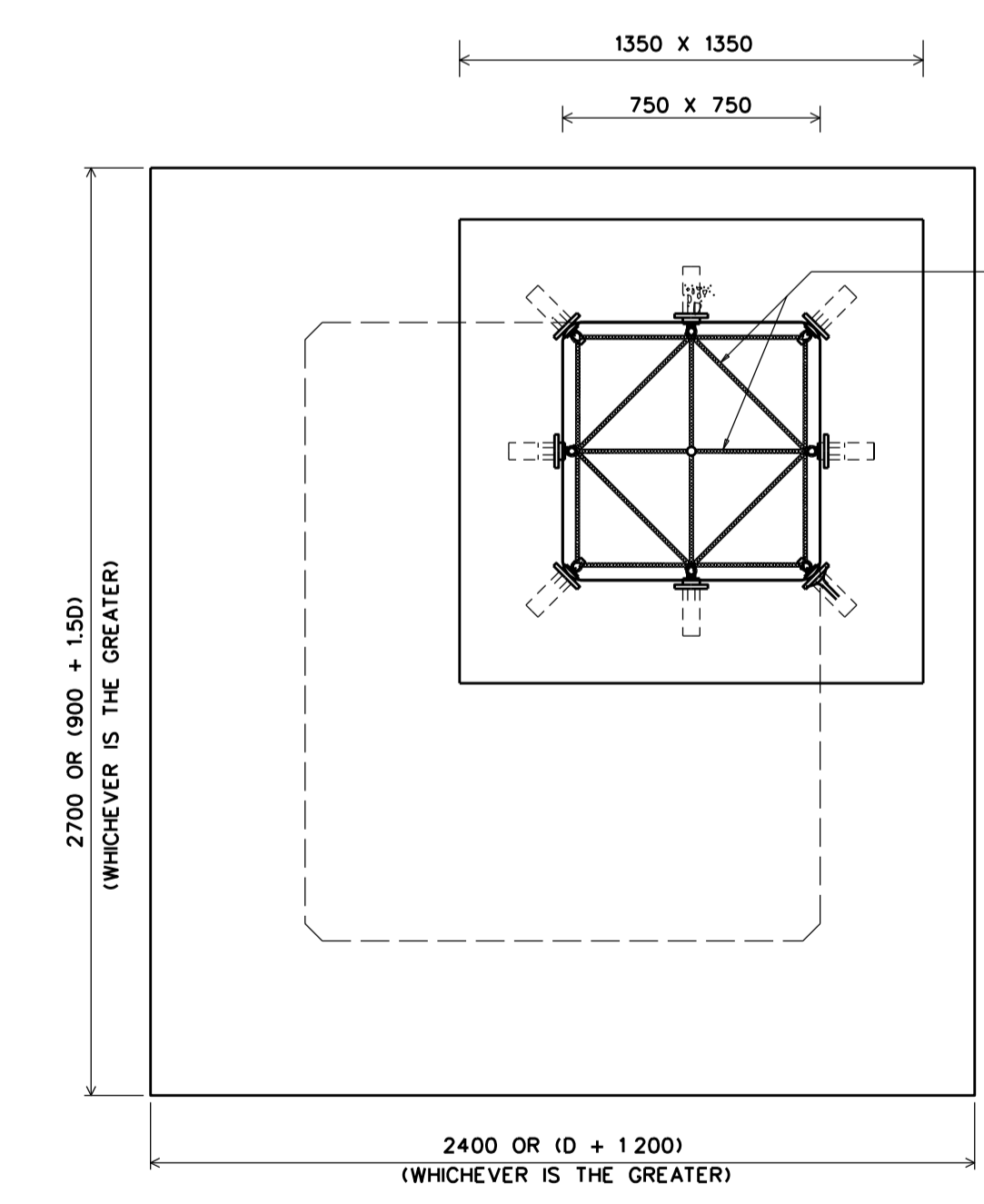
45° TUMBLING BAY  
(WHERE REQUIRED)  
(MAX. 450mm DIA.)



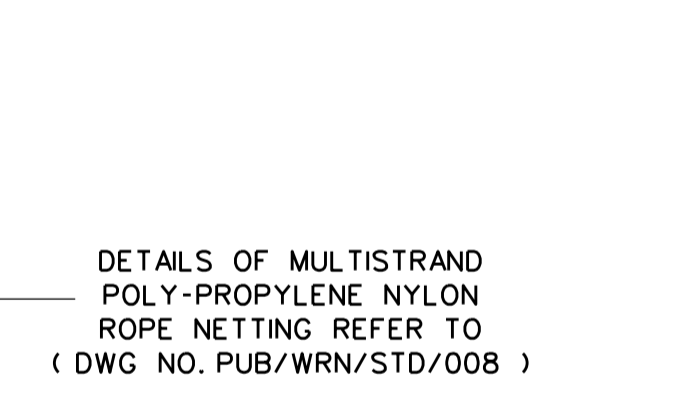
STRAIGHT-IN CONNECTION  
(WHERE REQUIRED)



PLAN C-C

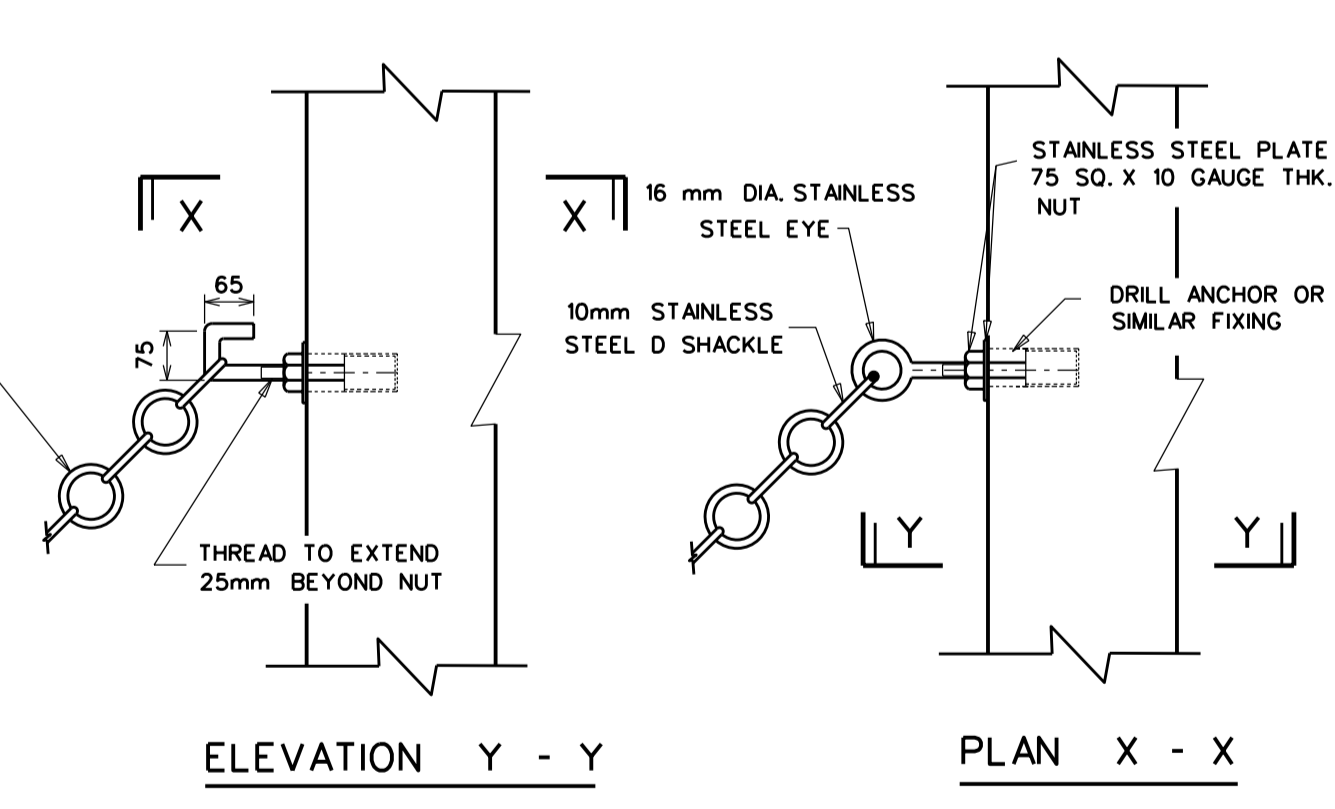


ROOF SLAB



DETAILS OF MULTISTRAND  
POLY-PROPYLENE NYLON  
ROPE NETTING REFER TO  
(DWG NO. PUB/WRN/STD/008)

50mm INT. DIA. STAINLESS STEEL RINGS OR 16mm DIA. MULTI-STRAND POLY-PROPYLENE NYLON ROPE



ELEVATION Y - Y

PLAN X - X

DETAIL OF SAFETY CHAIN

SCALE 1:10

- NOTES:
1. UNLESS OTHERWISE STATED, ALL CONCRETE MIX TO BE GRADE 25 AND ABOVE.
  2. BENCHING TO BE IN GRADE 25 CONCRETE.
  3. ALL STEEL REINFORCING BARS TO HAVE MIN. 50mm.
  4. PIPES SHOULD END 75mm SHORT OF MANHOLE INTERNAL WALL.
  5. MANHOLES EXCEEDING 6.0m DEEP TO INVERT, SHALL BE DESIGNED SEPARATELY.

ISSUED BY WATER RECLAMATION (NETWORK) DEPARTMENT  
ON OCT '09

SCALES  
1:20  
UNLESS  
OTHERWISE  
STATED

STANDARD 45° BEND MANHOLE FOR SEWERS 1050mm DIA. AND ABOVE

**PUB**  
Water For All  
WATER RECLAMATION (NETWORK) DEPARTMENT  
DRG. NO. PUB/WRN/STD/004A