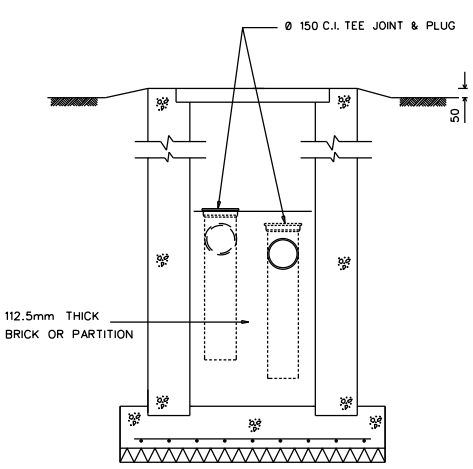
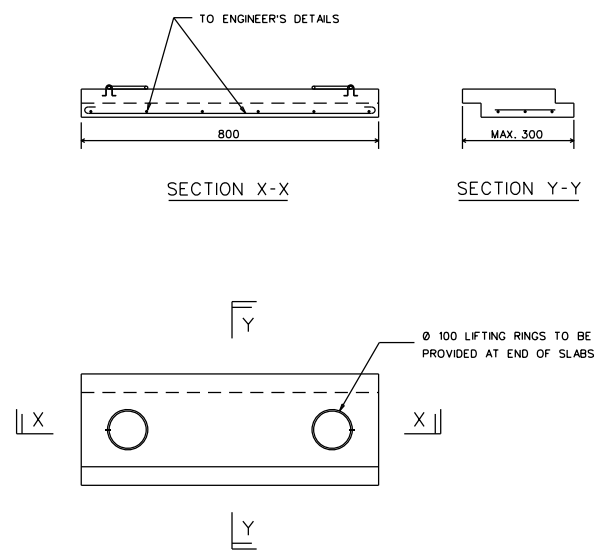


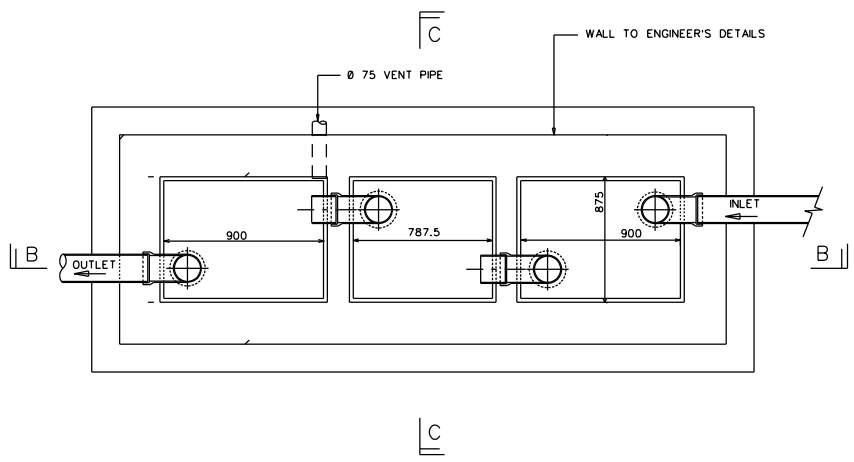
SECTION B-B



SECTION C-C



PLAN  
PRECAST CONCRETE SLAB  
SCALE :- 1:10



PLAN A-A

NOTES

1. THE INLET AND OUTLET PIPE AND COVER SLAB MUST BE DESIGNED TO WITHSTAND VEHICLE LOADING.
2. NO RAIN WATER IS TO BE DISCHARGED INTO THE SEWER.
3. IT IS THE RESPONSIBILITY OF THE OWNER TO MAINTAIN THE INTERCEPTOR REGULARLY SO AS TO ENSURE THAT NO PETROL, GREASE OR OIL IS DISCHARGED INTO THE SEWER.
4. OIL, SILT ETC. COLLECTED IN THE INTERCEPTOR SHALL BE REGULARLY REMOVED AND DISPOSED OF IN A MANNER ACCEPTABLE TO THE COMPETENT AUTHORITIES.
5. WHERE THE INTERCEPTOR RECEIVES WASTE PETROL, KEROSENE, PARAFFIN OR OTHER SIMILAR WASTES, AIR VENTS SHALL BE PROVIDED TO RELEASE THE INFLAMMABLE FUMES INTO THE OPEN AIR.
6. UNLESS OTHERWISE STATED, ALL CONCRETE GRADE SHALL BE MINIMUM C28/35.
7. REINFORCED CONCRETE DESIGN TO ENGINEER'S DETAILS.

CAPACITY : UP TO 227000 LITRES PER DAY

A [NOTES (1 TO 7) AMENDED AND ADDED.]  
AMENDMENTS

ISSUED : APR 2005	SCALES
REVIEWED : JAN 2019	1 : 20 UNLESS OTHERWISE STATED

STANDBY OIL INTERCEPTOR