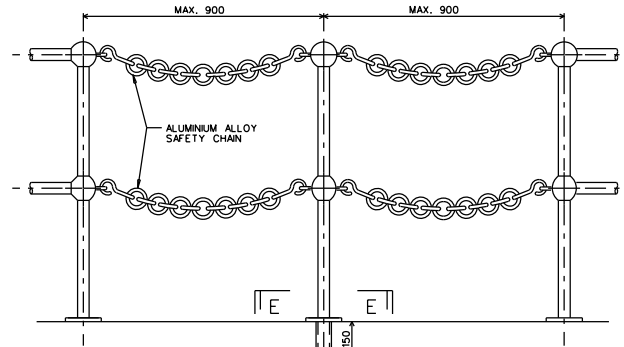
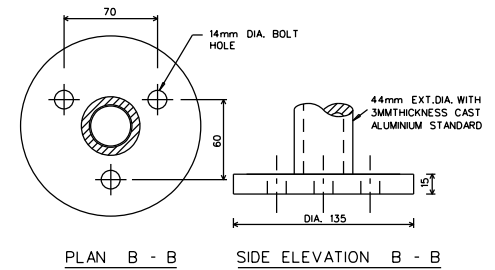


ANGLE STANDARD
SCALE 1:10

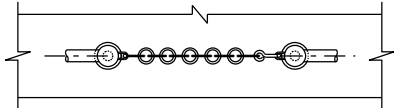


DETACHABLE STANDARD
SCALE 1:10

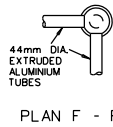


DETAIL OF BASE OF STANDARD
(VERTICAL MOUNTING)
SCALE 1:2

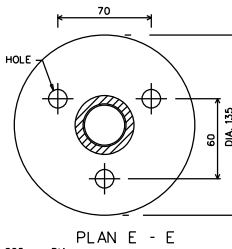
OPENING FOR ACCESS
SCALE 1:10



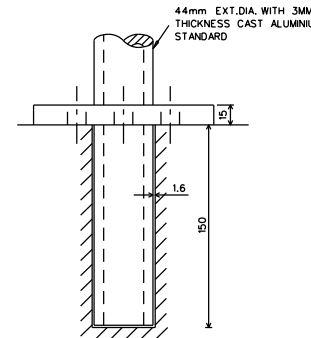
SIDE ELEVATION



PLAN F - F

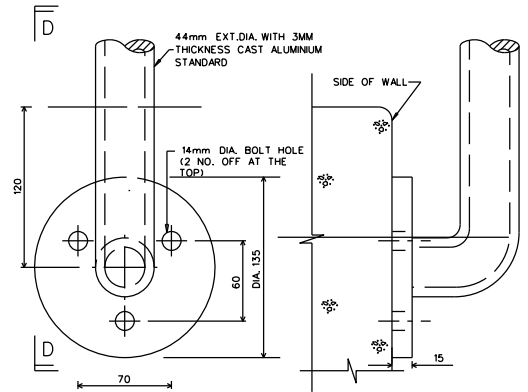


PLAN E - E



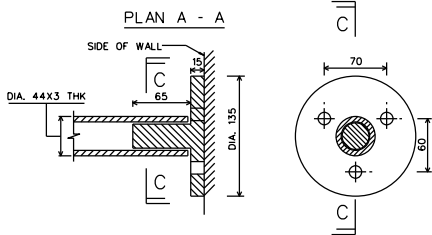
SIDE ELEVATION E - E

DETAIL OF BASE OF DETACHABLE STANDARD
SCALE 1:2

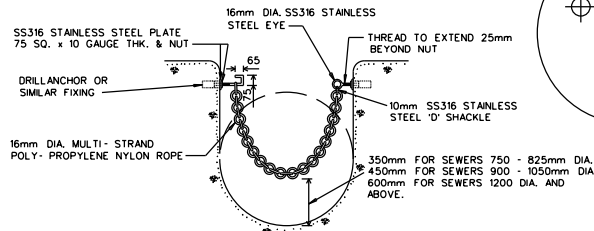


FRONT ELEVATION SIDE ELEVATION D - D

DETAIL OF BASE OF STANDARD
(SIDE MOUNTING)
SCALE 1:2

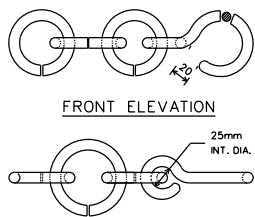


SECTION C - C ELEVATION C - C

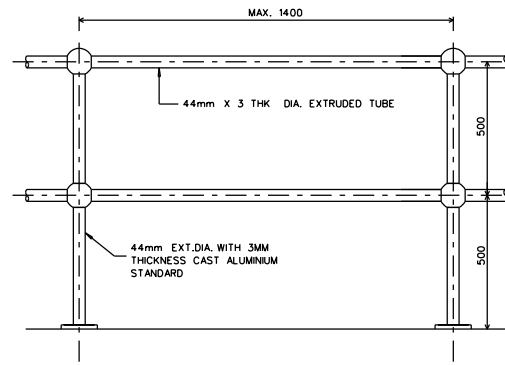


ARRANGEMENT OF SAFETY CHAIN
FOR MAIN SEWER IN MANHOLE
SCALE 1:20

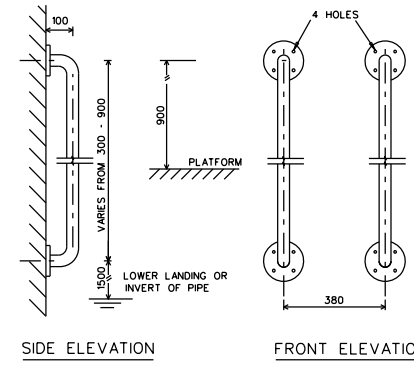
DETAIL OF BRACKET (WALL ATTACHMENT)
SCALE 1:3



DETAIL OF 50mm INT. DIA. RING AND HOOK
SCALE 1:3



TYPICAL HANDRAIL ARRANGEMENT
SCALE 1:10



DETAIL OF HANDHOLD
SCALE 1:10

NOTES :-

1. THE ALUMINIUM ALLOY SHALL BE 6082. THE FORM OF MATERIAL FOR THE RAILS SHALL BE TO EN 573, AND FOR THE STANDARDS SHALL BE TO EN 755.
2. WELDS TO BE OF A STRUCTURAL TYPE MADE BY APPROVED WELDING TECHNIQUE TO GIVE SOUND, STRONG WELDS WITH A MINIMUM DIMENSION NOT LESS THAN THE THICKNESS OF THE JOINING MEMBERS.
3. FIXING TO HANDRAILS TO BE MADE WITH ALUMINIUM ALLOY RAGBOLTS, BOLTS AND NUTS.
4. ALUMINIUM SURFACE IN CONNECTION WITH CONCRETE SHALL HAVE AT LEAST TWO COATINGS OF HEAVY-DUTY BITUMINOUS PAINT OR OTHER SEPARATING MATERIAL.
5. DIAMETER OF SS316 STAINLESS STEEL RAGBOLTS TO BE 13MM. THE RAGBOLT SHOULD BE EMBEDDED SUCH THAT THE SHANK PROTRUDES NOT MORE THAN TWO THREADS BEYOND THE HEAD OF THE NUT. RUBBER SEPARATOR SHALL BE PLACED BETWEEN THE BOLT AND THE ALUMINIUM BASE PLATE.
6. CONNECTION DETAILS
a) FILLET WELD ALL AROUND BETWEEN FENCE POST AND BASE PLATE.
b) FILLET WELD ALL AROUND BETWEEN JOINTING BALL AND FENCE POST, TOP AND BOTTOM.
c) RIVETED CONNECTION TO HORIZONTAL GUARDRAIL.
7. ALUMINIUM ALLOY HANDRAIL & SAFETY CHAIN ARE TO BE ANODISED ON BOTH THE INSIDE AND THE OUTSIDE OF THE MEMBER. MINIMUM THICKNESS OF THE ANODIC OXIDE LAYER SHALL BE 20µm.

1) THICKNESS OF MEMBERS ADDED.	
2) VERTICAL MOUNTING STANDARD'S BASE DIMENSION REVISED.	
3) WALL BRACKET DIMENSION REVISED.	
4) STAINLESS STEEL GRADE ADDED.	
5) STAINLESS STEEL SAFETY CHAIN REMOVED.	
6) BASE OF DETACHABLE STANDARD DIMENSION REVISED.	
7) BASE OF STANDARD (SIDE MOUNTING) DIMENSION REVISED.	
8) NOTE REVISED.	

AMENDMENTS