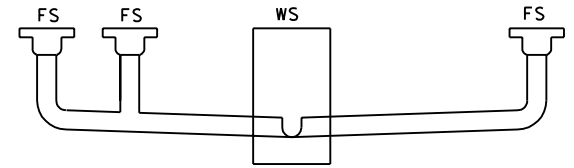
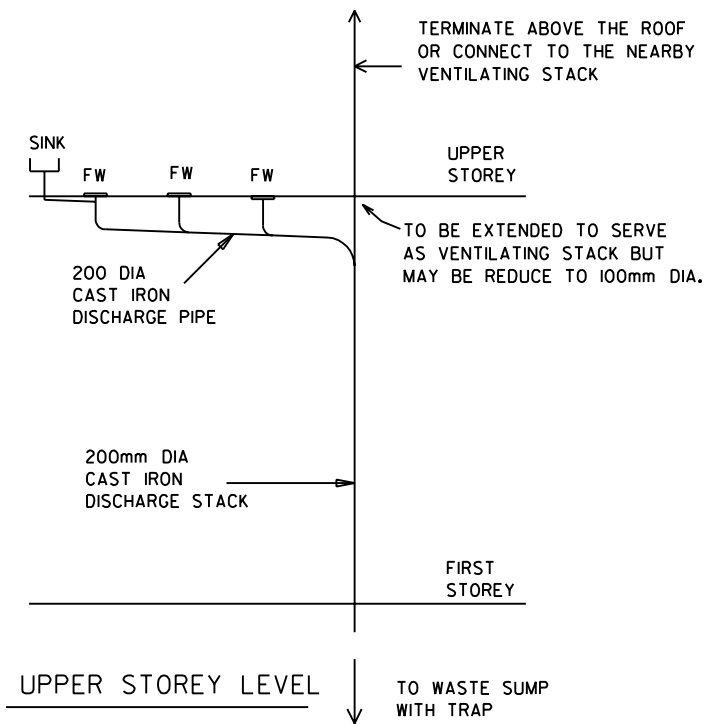


- NOTES :**
- (1) FINISHED LEVEL OF INSPECTION CHAMBER AND GULLY SUMP TO BE LOWER THAN THE FLOOR LEVEL OF THE MARKET
 - (2) THE BRANCH DRAIN-LINE FROM THE FLOOR SUMPS SHOULD BE CONNECTED TO A SUMP WITH A TRAP(225mm dia) BEFORE CONNECTING TO THE FIRST INSPECTION CHAMBER.
 - (3) THE GRADIENT FOR BRANCH DRAIN-LINE FOR FLOOR SUMP TO WASTE SUMP AND WASTE SUMP TO INSPECTION CHAMBER SHOULD BE BETWEEN 1: 70 TO 1: 90

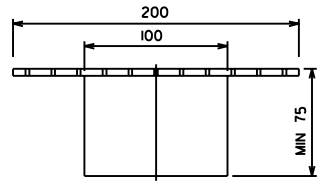


ELEVATION A - A

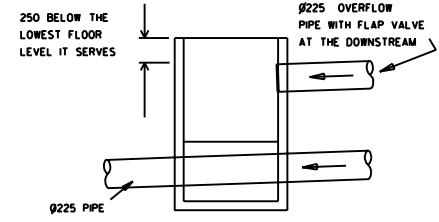
- LEGEND :**
- FS - FLOOR SUMP
 - IC - INSPECTION CHAMBER
 - WS - WASTE SUMP (600 X 600 INTERNAL)

ALL DIMENSIONS ARE IN MM

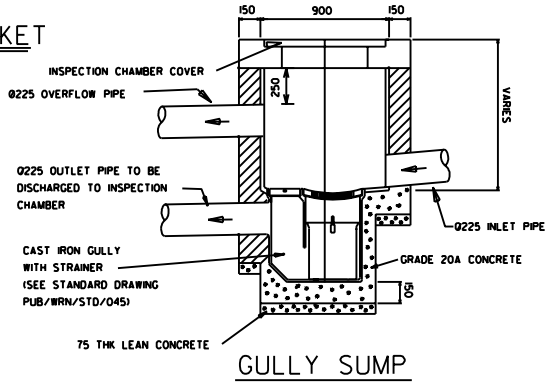
LAYOUT OF DRAINLINES FOR MARKET



SCUPPER DRAIN (ELEVATION)



INSPECTION CHAMBER WITH OVERFLOW PIPE



GULLY SUMP

SANITARY DRAINAGE SYSTEM FOR MARKET