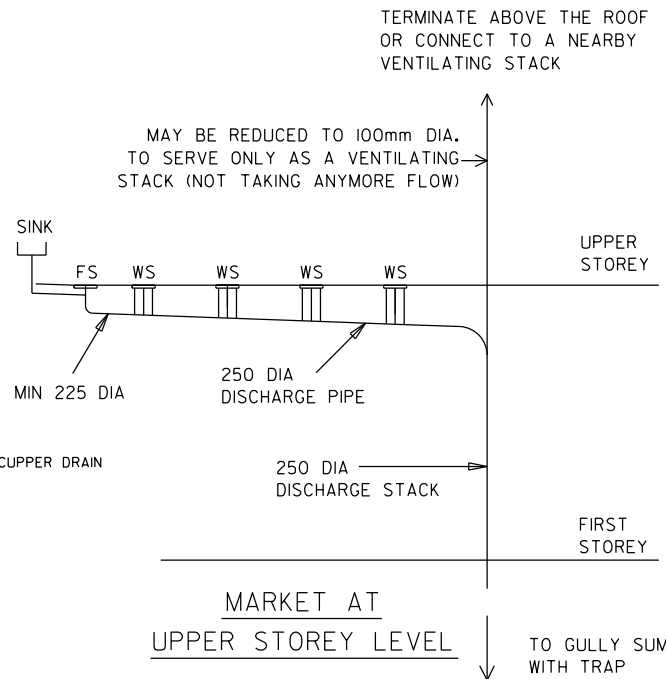


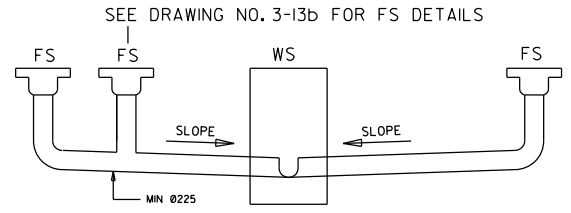
NOTES :

- (1) FINISHED LEVEL OF INSPECTION CHAMBER AND GULLY SUMP TO BE LOWER THAN THE FLOOR LEVEL OF THE MARKET.
- (2) THE DISCHARGE PIPE FROM THE FLOOR SUMP TO WASTE SUMP AND WASTE SUMP TO INSPECTION CHAMBER SHOULD BE BETWEEN 1:70 AND 1:90.
- (3) THE GRADIENT FOR DISCHARGE PIPE FOR FLOOR SUMP TO WASTE SUMP AND WASTE SUMP TO INSPECTION CHAMBER SHOULD BE BETWEEN 1:70 AND 1:90.
- (4) THE DISCHARGE PIPE SERVING MARKET AT UPPER STOREY SHALL BE CORROSION RESISTANT, HIGH TEMPERATURE RESISTANT (min. 90°C intermittent) AND WITH A MINIMUM 2 BAR (PN2) PRESSURE RATING.

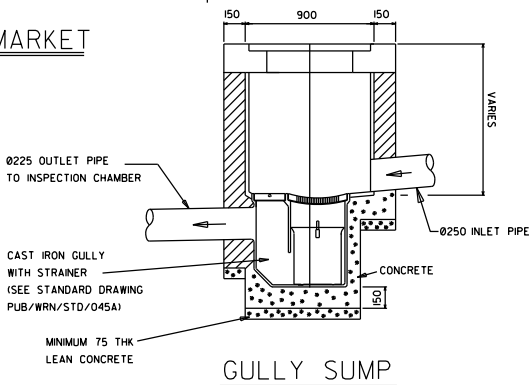
LAYOUT OF DRAINLINES FOR MARKET



MARKET AT UPPER STOREY LEVEL



ELEVATION A - A



GULLY SUMP

- LEGEND :**
- FS - FLOOR SUMP (REFER TO DRAWING NO. 3-13b)
 - IC - INSPECTION CHAMBER
 - WS - WASTE SUMP (600 X 600 INTERNAL)

ALL DIMENSIONS ARE IN MM