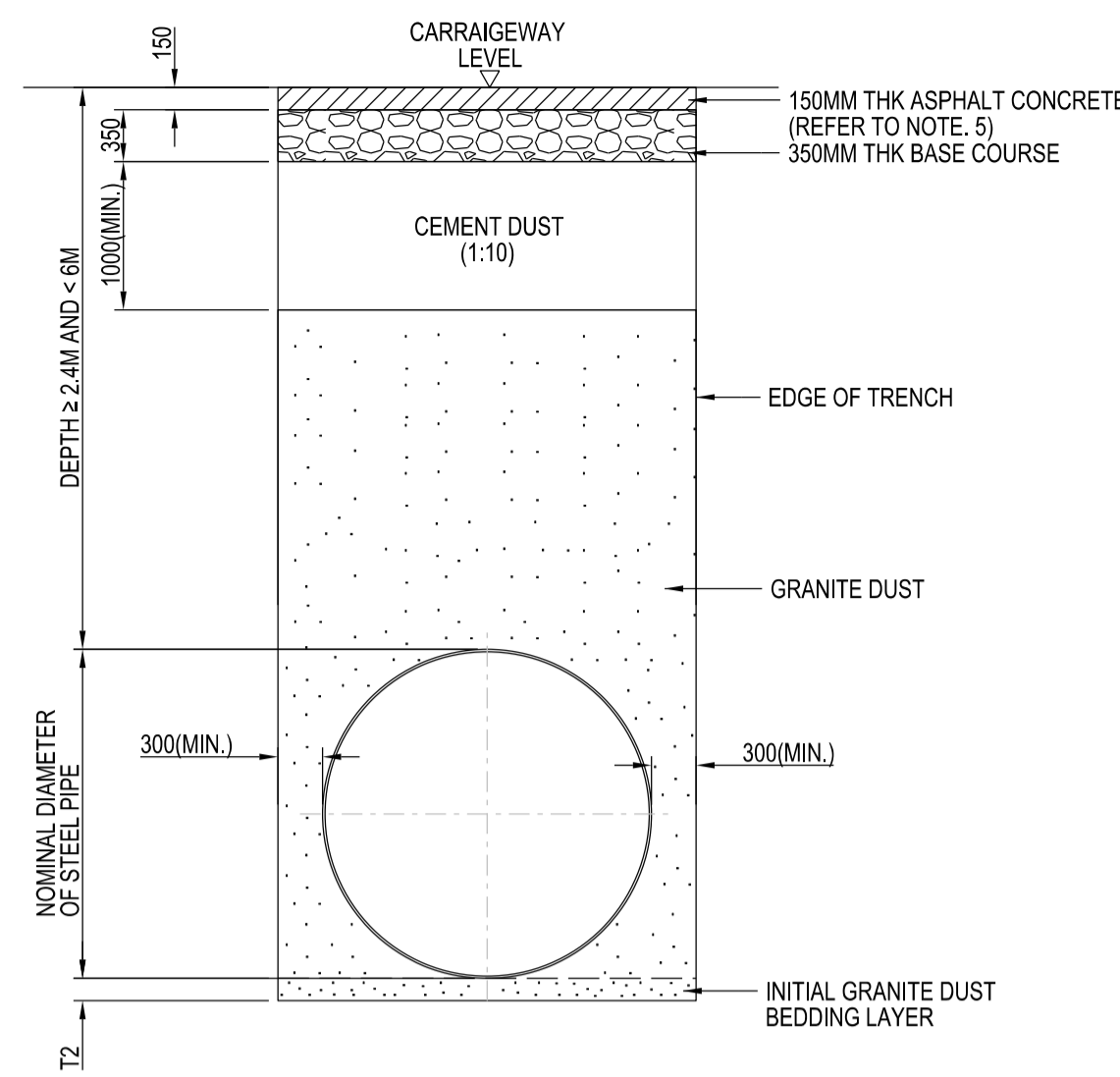
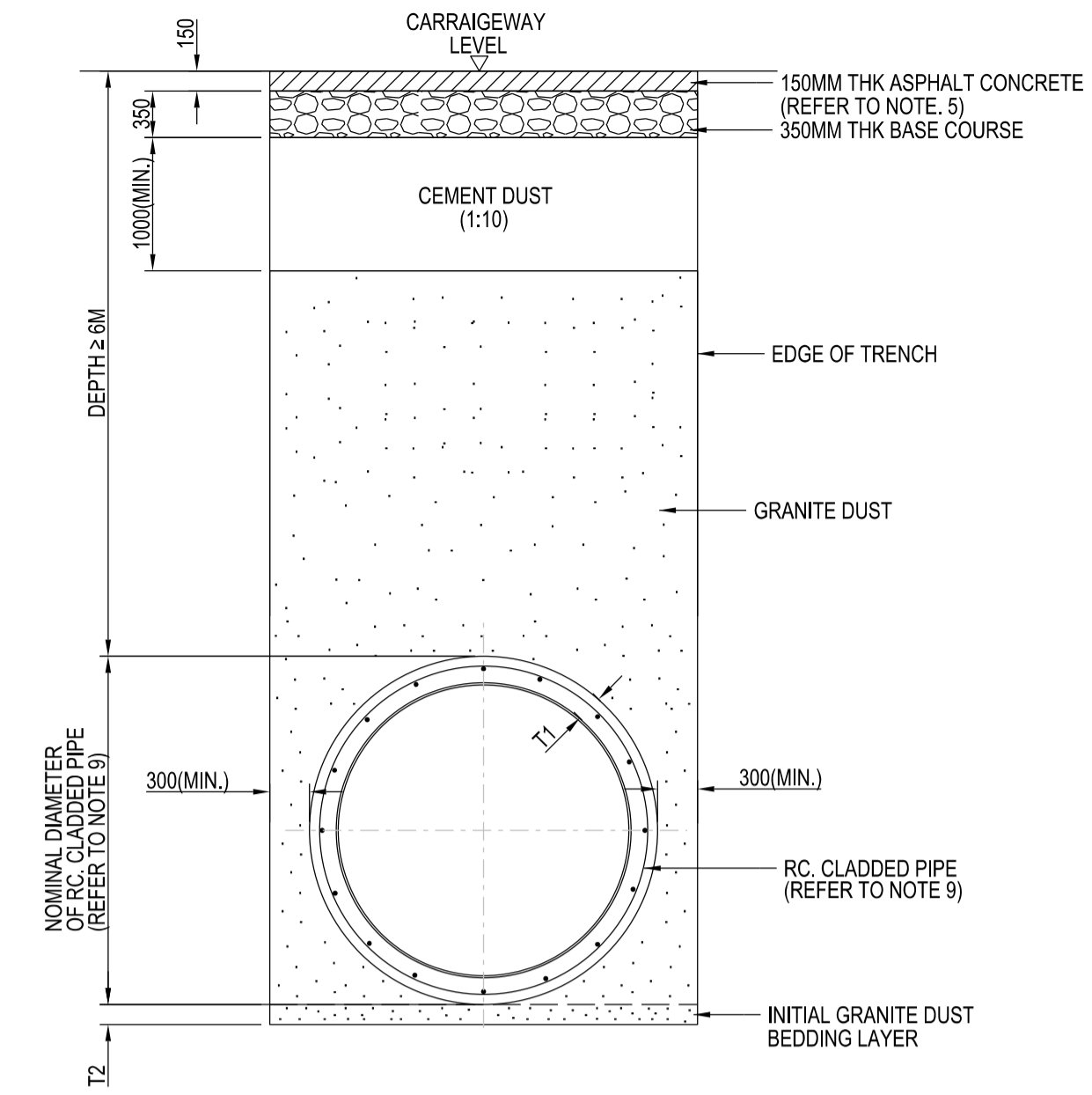


DEPTH FROM CARRIAGEWAY LEVEL TO TOP OF PIPE > 1M AND < 2.4M



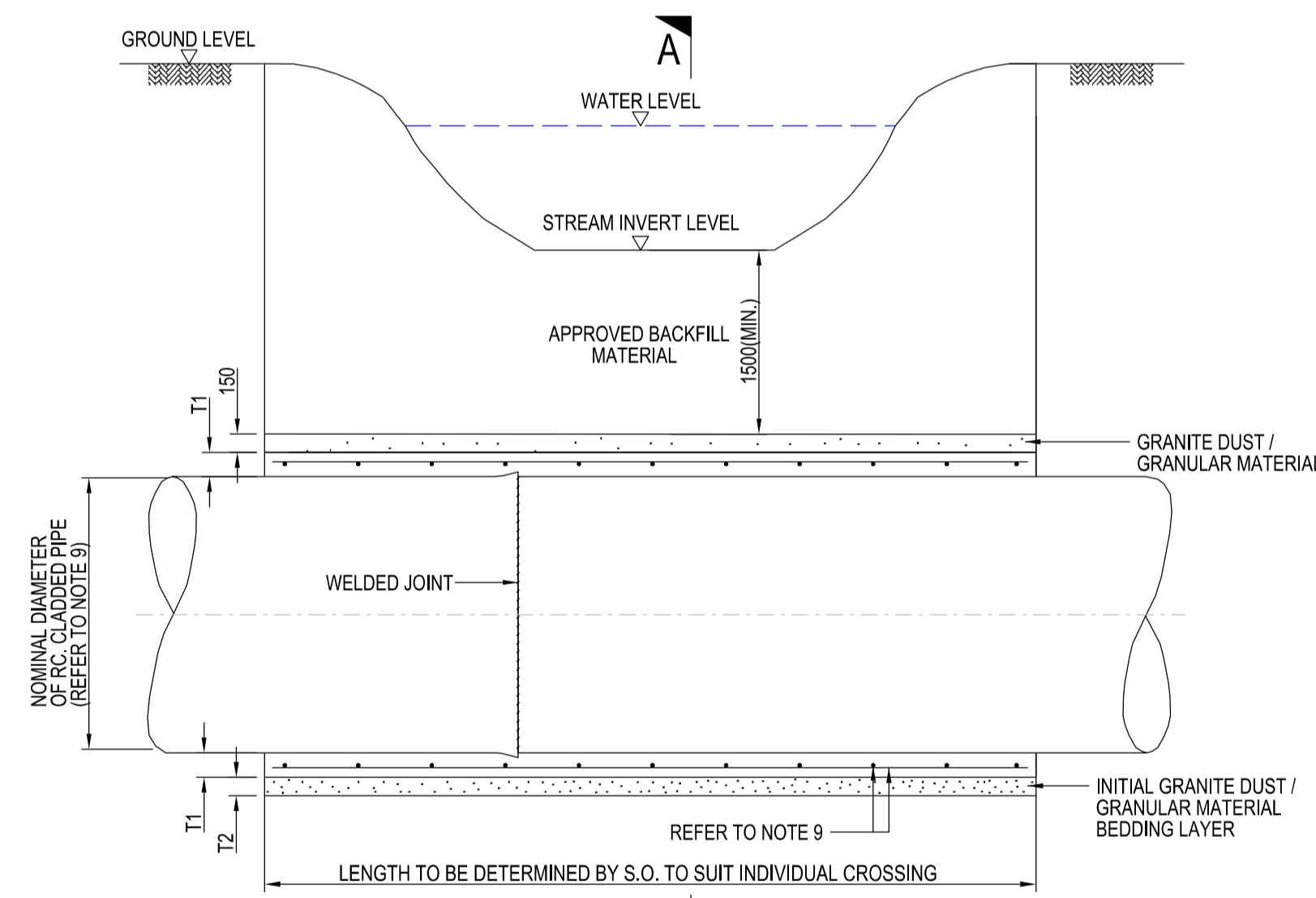
DEPTH FROM CARRIAGEWAY LEVEL TO TOP OF PIPE ≥ 2.4M AND < 6M



DEPTH FROM CARRIAGEWAY LEVEL TO TOP OF RC CLADDED PIPE ≥ 6m

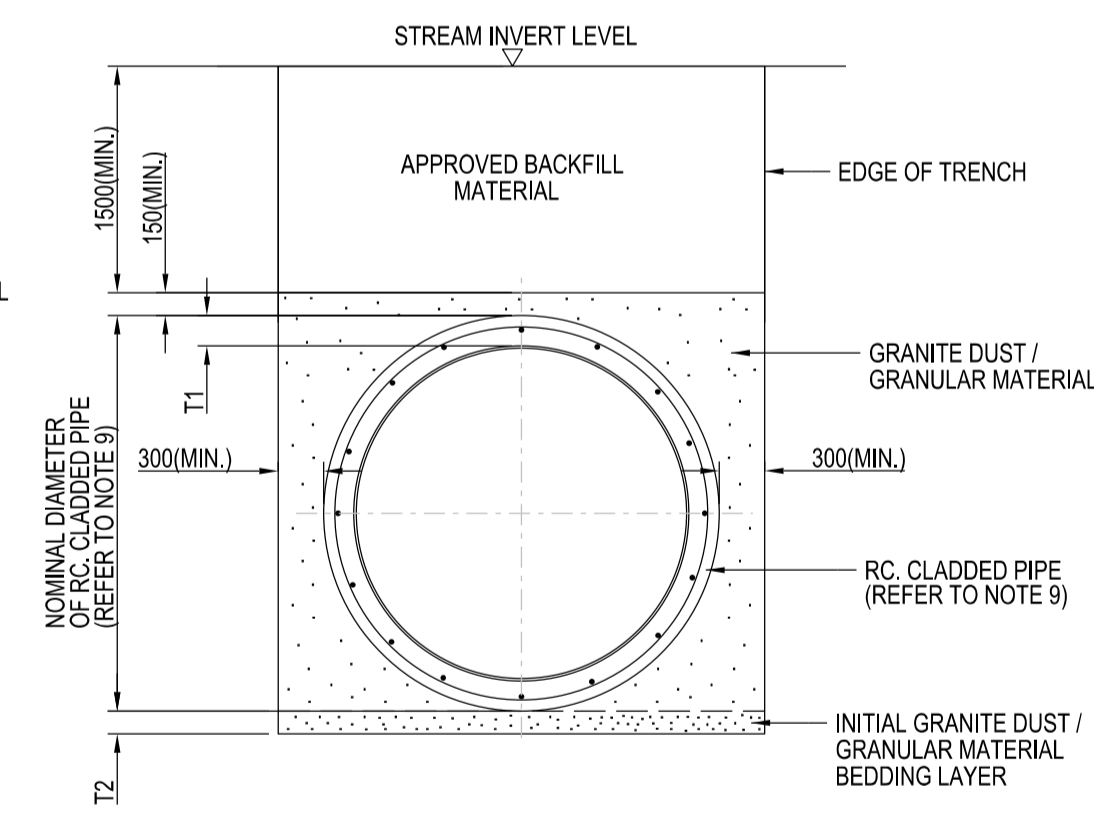
- NOTES:
1. ALL DIMENSIONS ARE IN MILLIMETRES UNLESS OTHERWISE STATED.
 2. THE CONTRACTOR SHALL REFER TO THE GENERAL NOTES IN DRAWING NO. PUB/WSN/IGN/001.
 3. THIS DRAWING IS FOR CONTRACTOR'S REFERENCE ONLY. THE ROAD REINSTATEMENT WORKS SHALL BE CARRIED OUT IN ACCORDANCE WITH THE LATEST EDITION OF LTA'S CODE OF PRACTICE FOR WORKS ON PUBLIC STREETS AND WITH NPARK'S REQUIREMENTS.
 4. THE CONTRACTOR SHALL REFER TO THE SPECIFICATIONS AND LTA REQUIREMENTS FOR DETAILS OF APPROVED BACKFILLING MATERIALS.
 5. THE 150MM THK ASPHALT CONCRETE LAYERS SHALL CONSIST OF 100MM THK 'B1' BINDER COURSE AND 50MM THK 'W3' ASPHALTIC WEARING COURSE COMPACTED INDEPENDENTLY IN 1 OPERATION. 'W1' FINE MIX IS NOT ALLOWED TO BE USED.
 6. THE BASE COURSE SHALL BE GRADED GRANITE OF MAXIMUM SIZE 50MM AND CONFORM TO LTA'S MATERIAL AND WORKMANSHIP SPECIFICATIONS OR RECYCLED CONCRETE AGGREGATE.
 7. RC. CLADDING AND HAUNCHING FOR PIPES LAID BY OPEN-CUT METHOD SHALL BE OF C40/50 CONCRETE GRADE.
 8. PIPE Ø ≤ 1200MM, T1 = 150MM (MIN.), T2 = 150MM (MIN.)
PIPE Ø > 1200MM, T1 = 180MM (MIN.), T2 = 300MM (MIN.)
 9. EXTERNAL CLADDING (REFER TO PUB/WSN/STD/202) AND RC. HAUNCHING AROUND THE STEEL PIPE SHALL BE DESIGNED AND ENDORSED BY A PROFESSIONAL ENGINEER (P.E.)

PIPE BEDDING AND REINSTATEMENT FOR CARRIAGEWAY AT NON-ROAD JUNCTION

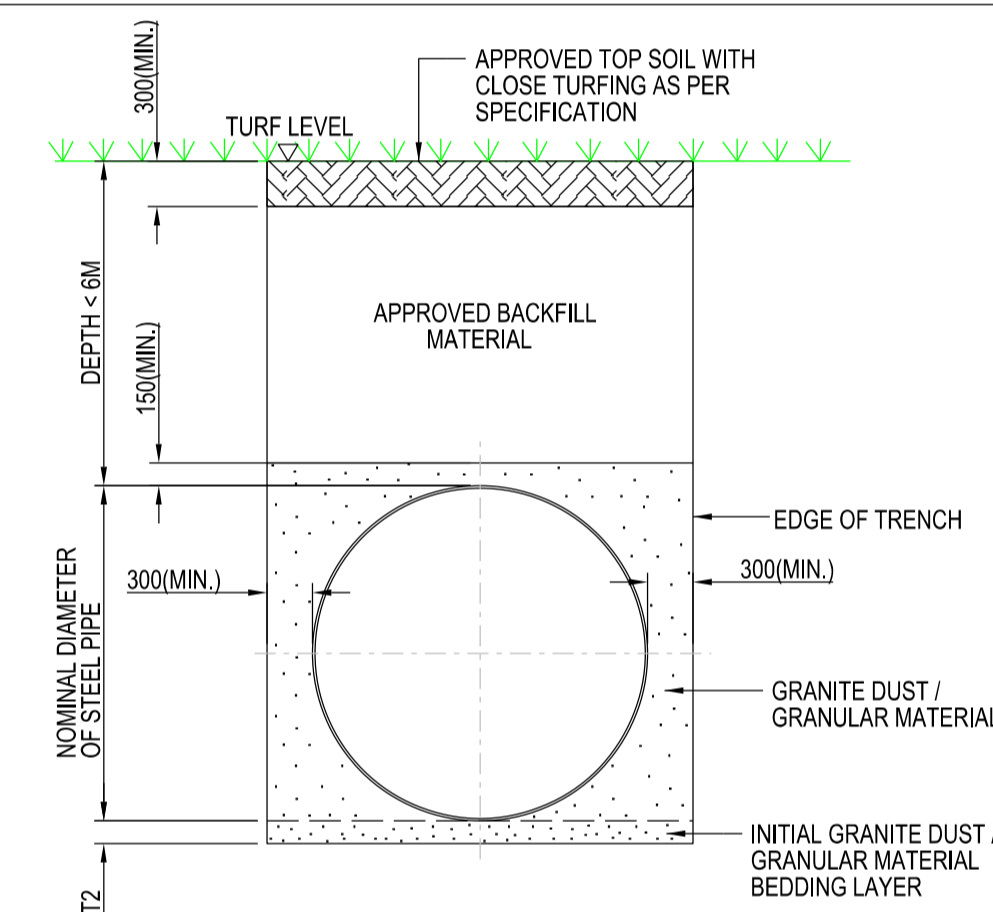


ELEVATION

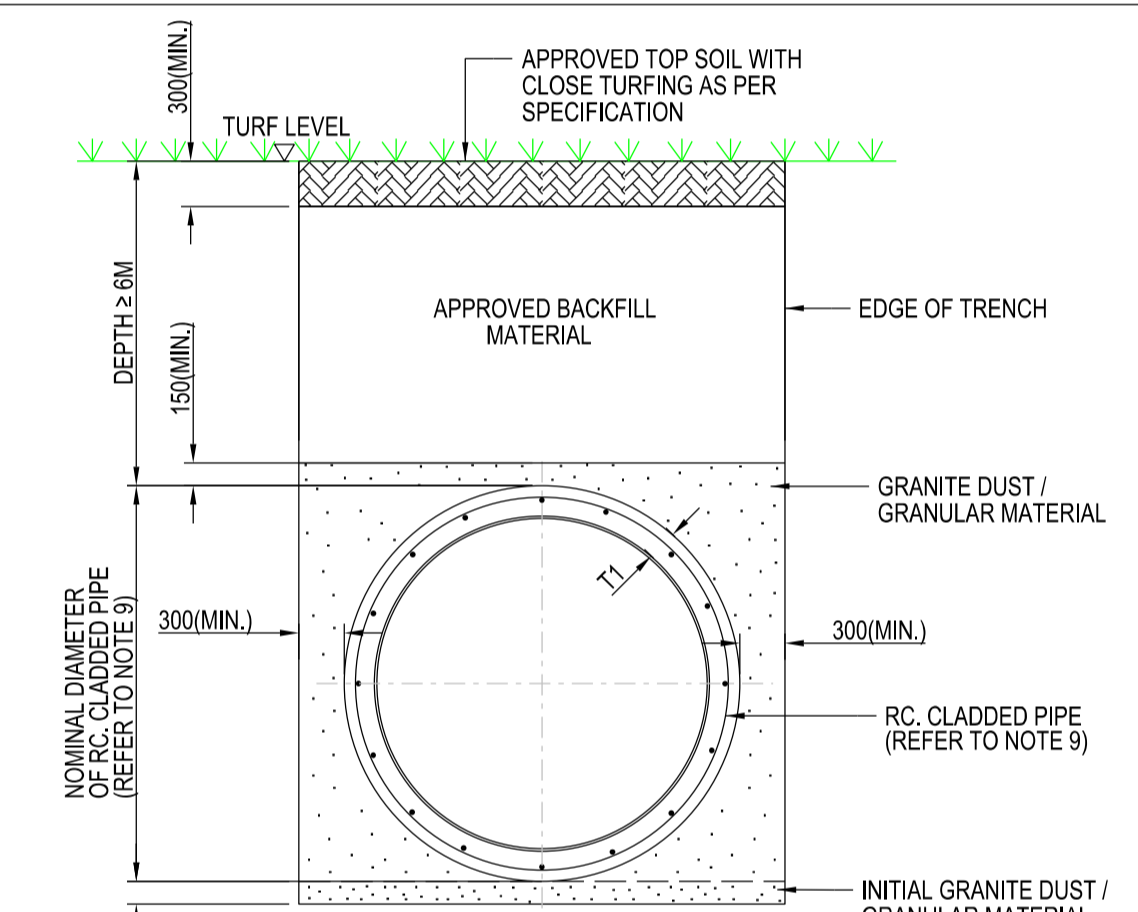
PIPE BEDDING AND REINSTATEMENT FOR STREAM UNDER CROSSING



SECTION A - A

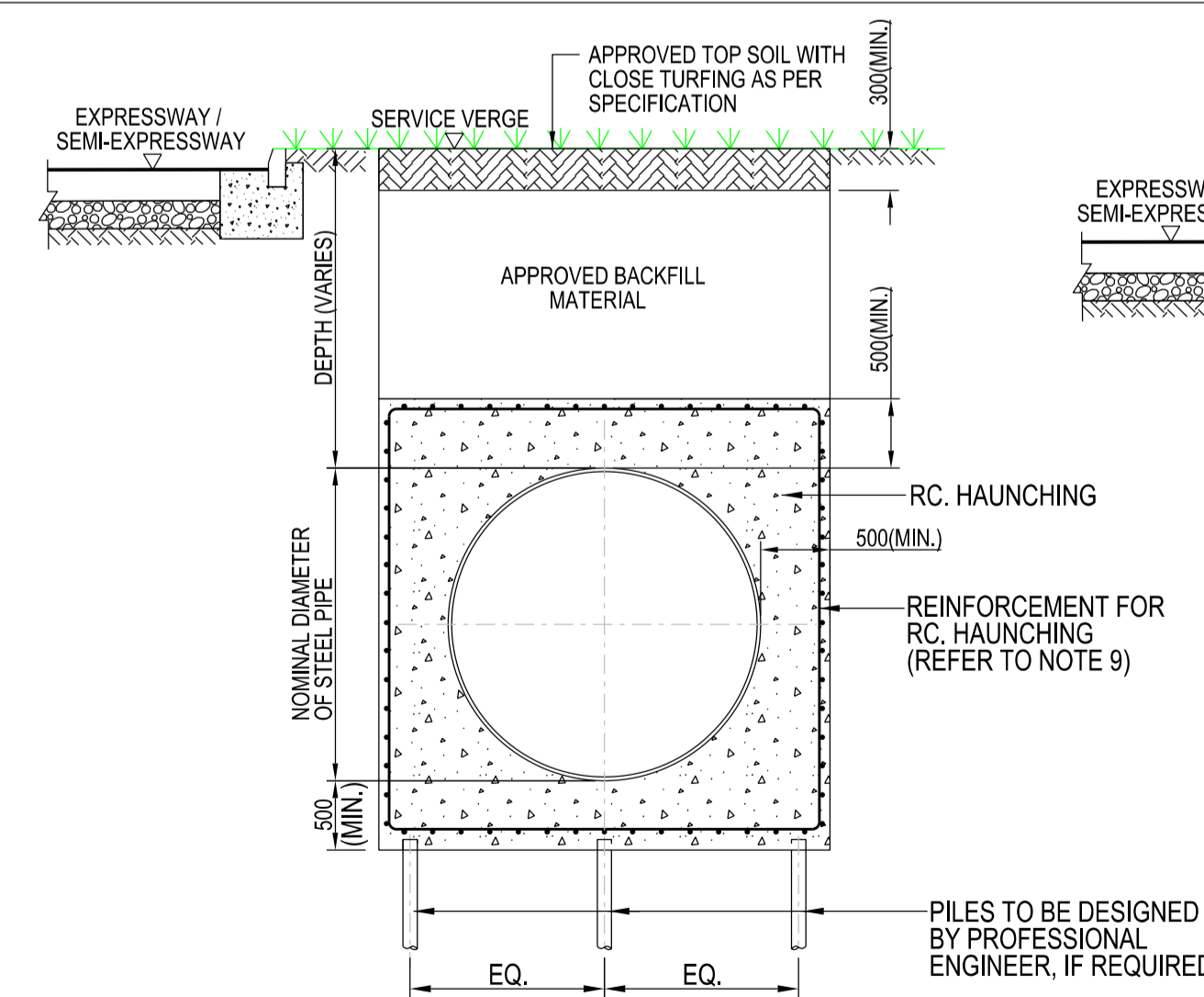


DEPTH FROM TURF LEVEL TO TOP OF PIPE < 6m

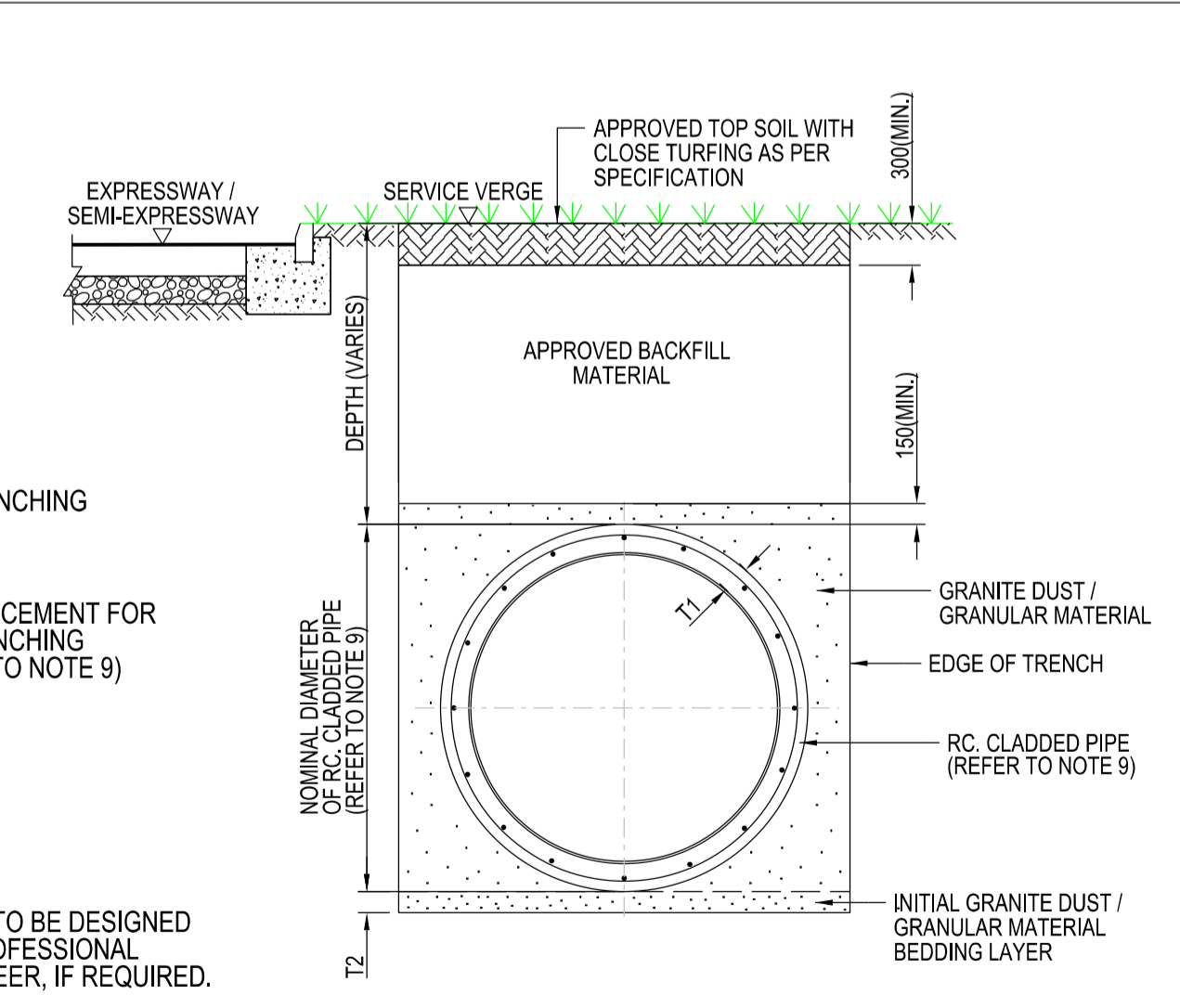


DEPTH FROM TURF LEVEL TO TOP OF PIPE ≥ 6m

PIPE BEDDING AND REINSTATEMENT FOR TURFED AREAS



TYPE 1 - PIPE WITH RC. HAUNCHING



TYPE 2 - PIPE WITH RC. CLADDING

PIPE BEDDING AND REINSTATEMENT FOR SERVICE VERGE ADJACENT TO EXPRESSWAY AND SEMI-EXPRESSWAY

ISSUED: SEP 2020

SCALE

LAST REVIEWED: SEP 2020

NTS

DETAILS OF TRENCH EXCAVATION AND REINSTATEMENT CONSTRUCTED BY OPEN-CUT METHOD (FOR Ø700-2200mm STEEL PIPES)