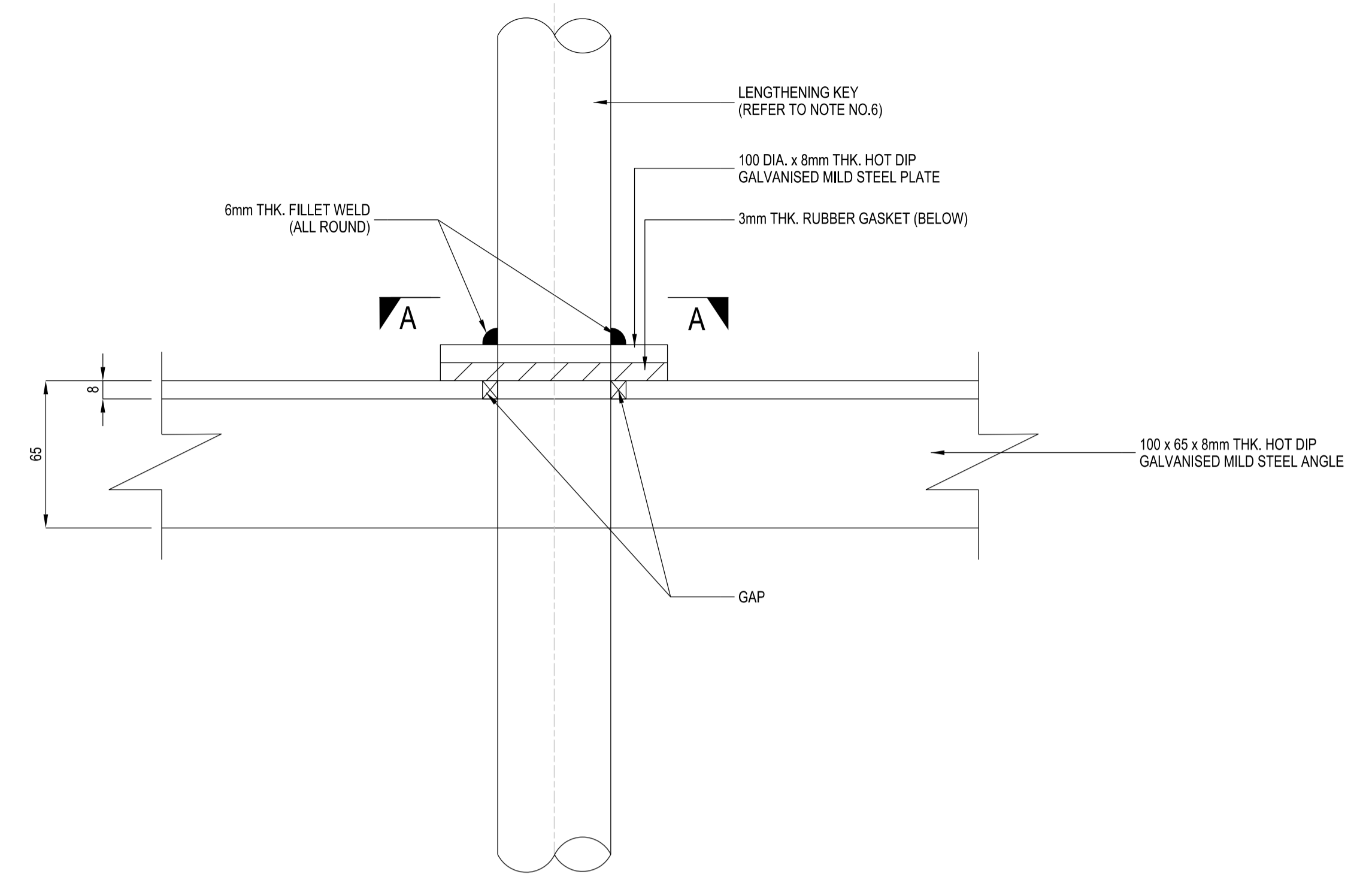
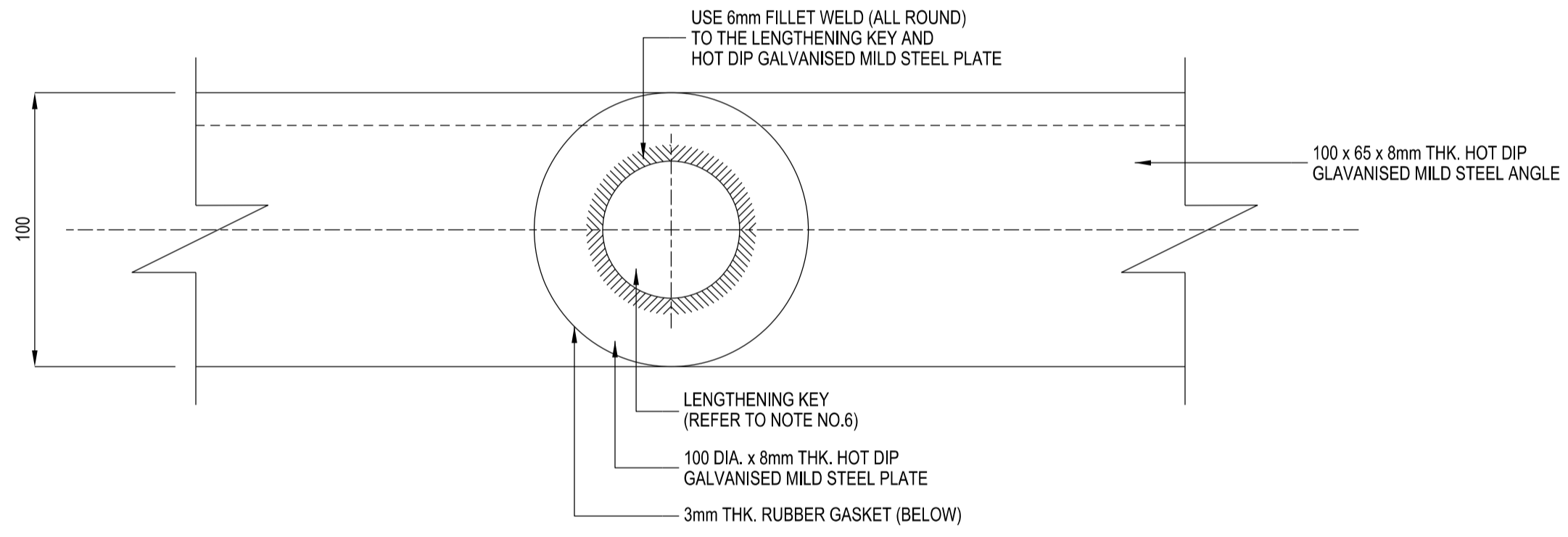


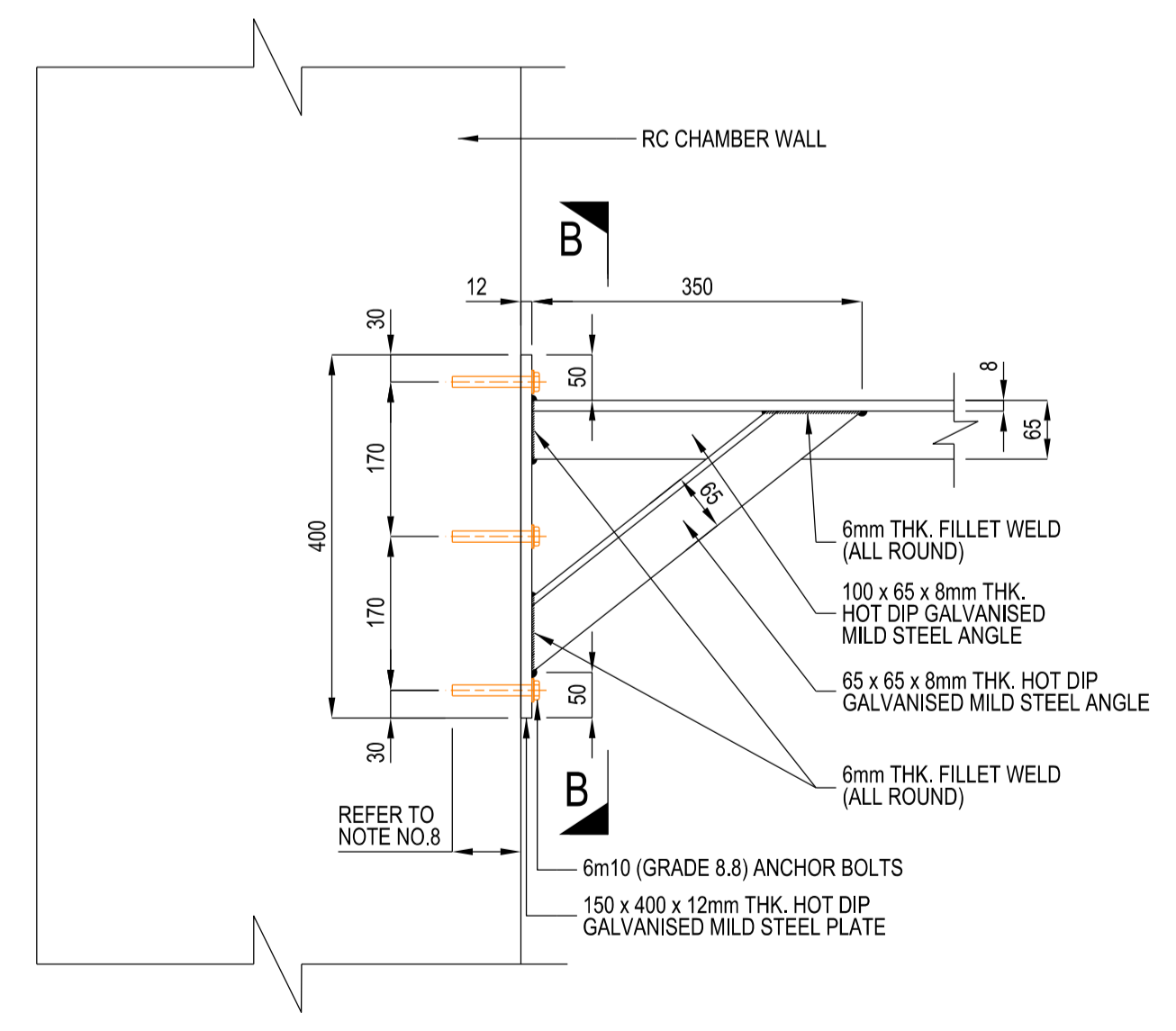
**LENGTHENING KEY SUPPORT**  
SCALE 1: 10



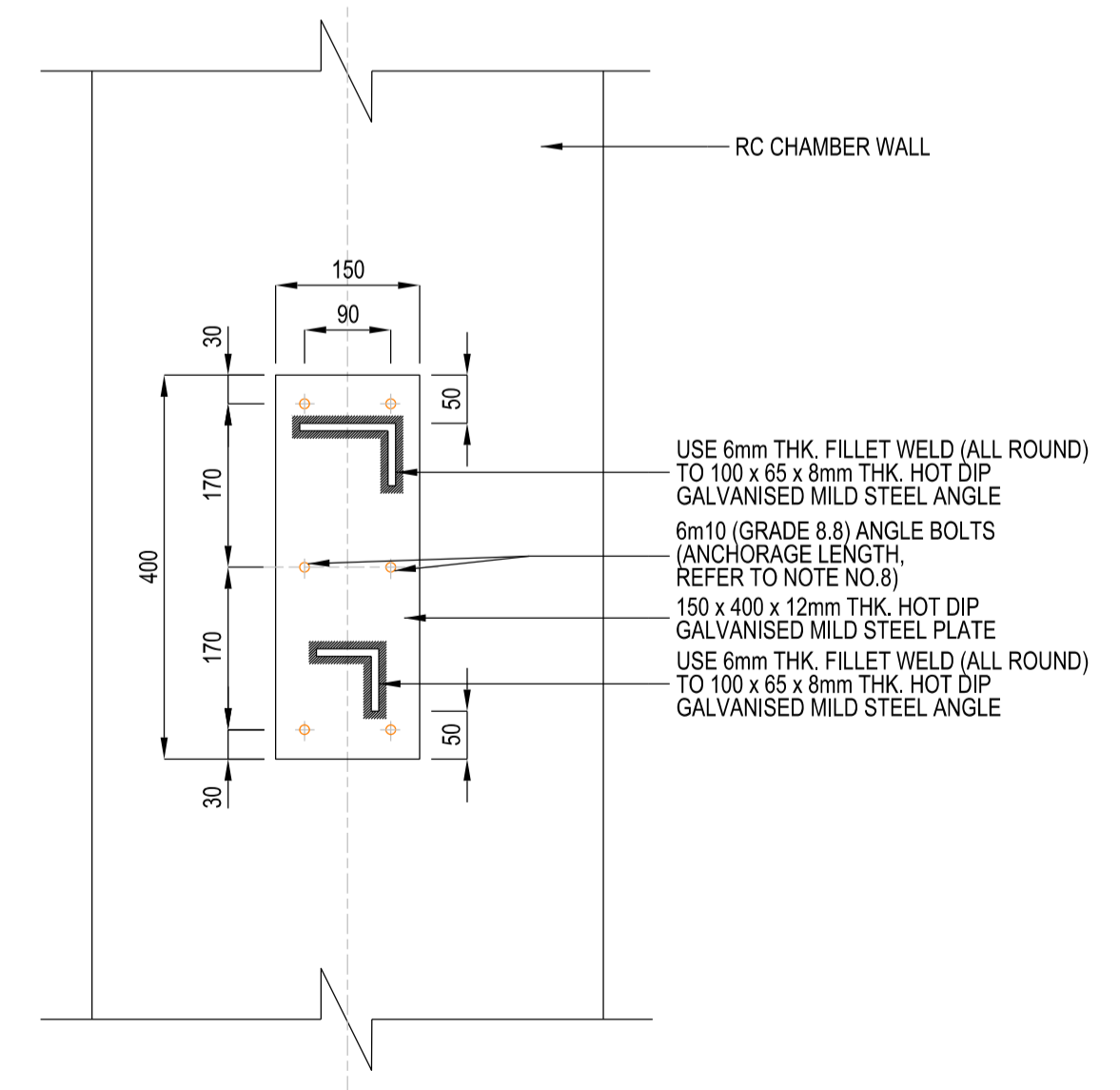
**DETAIL 1**  
SCALE 1: 2



**SECTION A - A**  
SCALE 1: 2



**DETAIL 2**  
SCALE 1: 7.5



**SECTION B - B**  
SCALE 1: 7.5

- NOTES:
- ALL DIMENSIONS ARE IN MILLIMETRES UNLESS OTHERWISE STATED.
  - REFER TO THE GENERAL NOTES IN THE DRAWING NO. PUB/WSN/GN/001
  - STEEL GRADE SHALL BE S275 IN HOT DIP GALVANISED MILD STEEL.
  - THIS DRAWING IS ONLY FOR VALVE LENGTHENING KEYS UP TO 4.5m LENGTH. THE CONTRACTOR SHALL ENGAGE A PROFESSIONAL ENGINEER (PE) TO DESIGN THE LENGTHENING KEYS THAT EXCEED 4.5m LENGTH, BASED ON THE TORQUE PROVIDED BY THE VALVE MANUFACTURER.
  - LENGTHENING KEY SUPPORT FOR CHAMBERS MORE THAN 6m DEPTH SHALL BE DESIGNED BY CONTRACTOR'S PE.
- | NOMINAL VALVE DIAMETER (mm) | DIAMETER OF LENGTHENING KEY (mm) |
|-----------------------------|----------------------------------|
| ≤700                        | 38                               |
| 800                         | 42                               |
| 900                         | 46                               |
| 1200                        | 50                               |
| >1200                       | ADVISED BY VALVE MANUFACTURER    |
- ALL WELDING SHALL BE CARRIED OUT IN ACCORDANCE WITH SS EN 1011-1 AND SS EN 1011-2. ELECTRODES SHALL COMPLY WITH BS 639. THE LEGS OF THE PLATE FORMING THE JOINT, ALL WELDING SHALL BE BUILT UP TO FULL THROAT THICKNESS.
  - ALL ANCHOR BOLTS SHALL COMPLY WITH BS SS316. REFER TO MANUFACTURER'S SPECIFICATIONS FOR BOLTS ANCHORAGE LENGTH.

ISSUED: SEP 2020

LAST REVIEWED: AUG 2021

SCALE: AS SHOWN  
DRAWING NO.: PUB/WSN/STD/207

**LENGTHENING KEY SUPPORT**