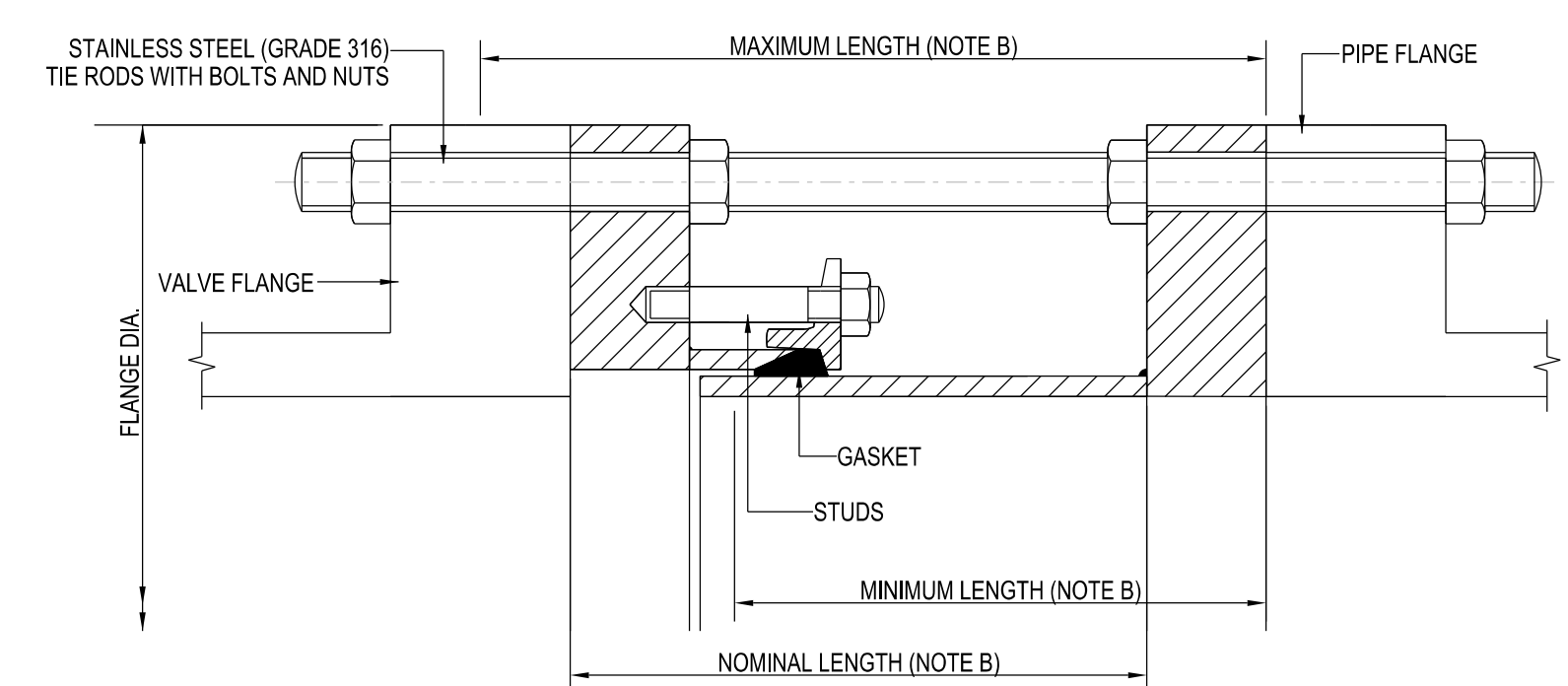
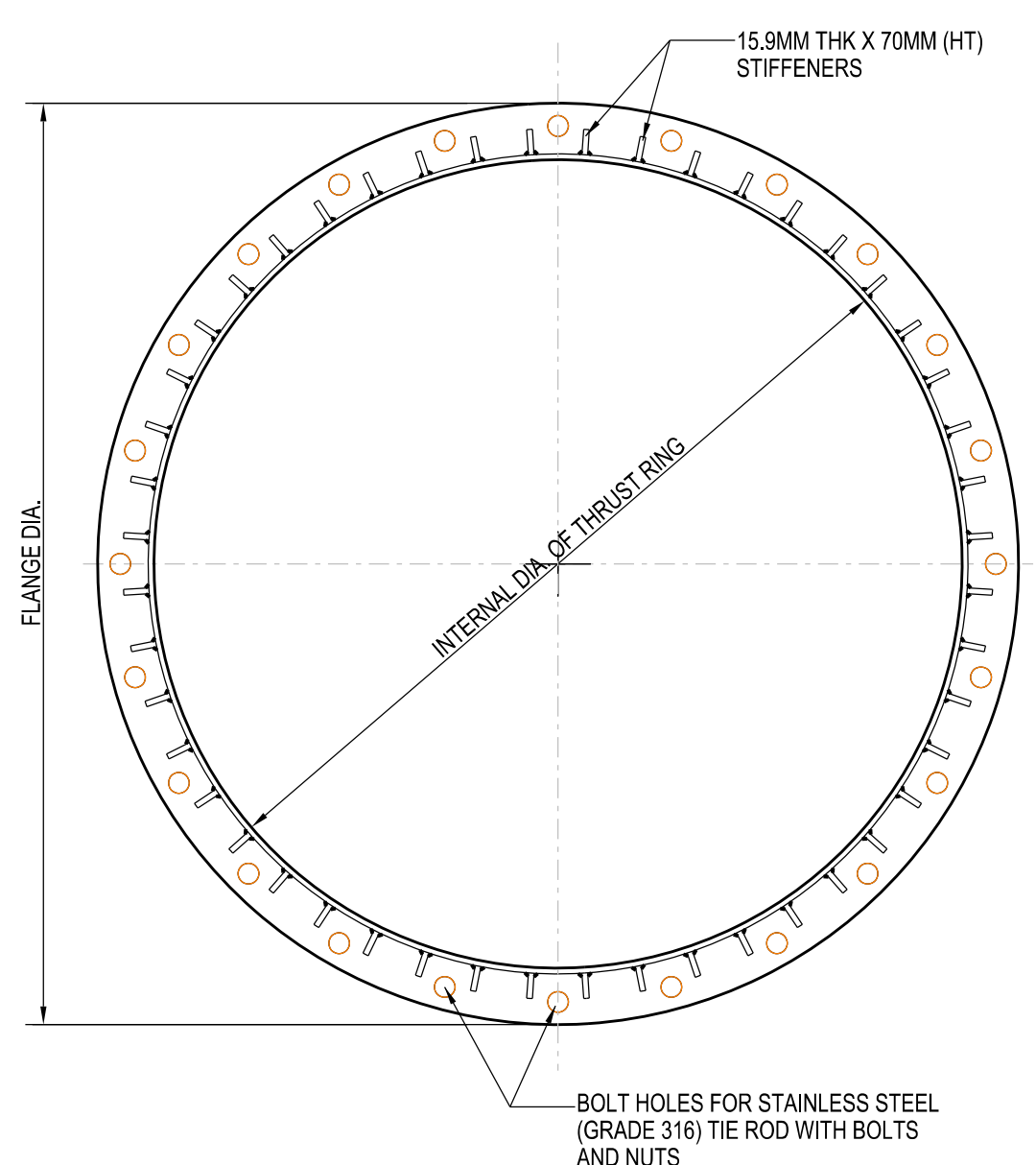
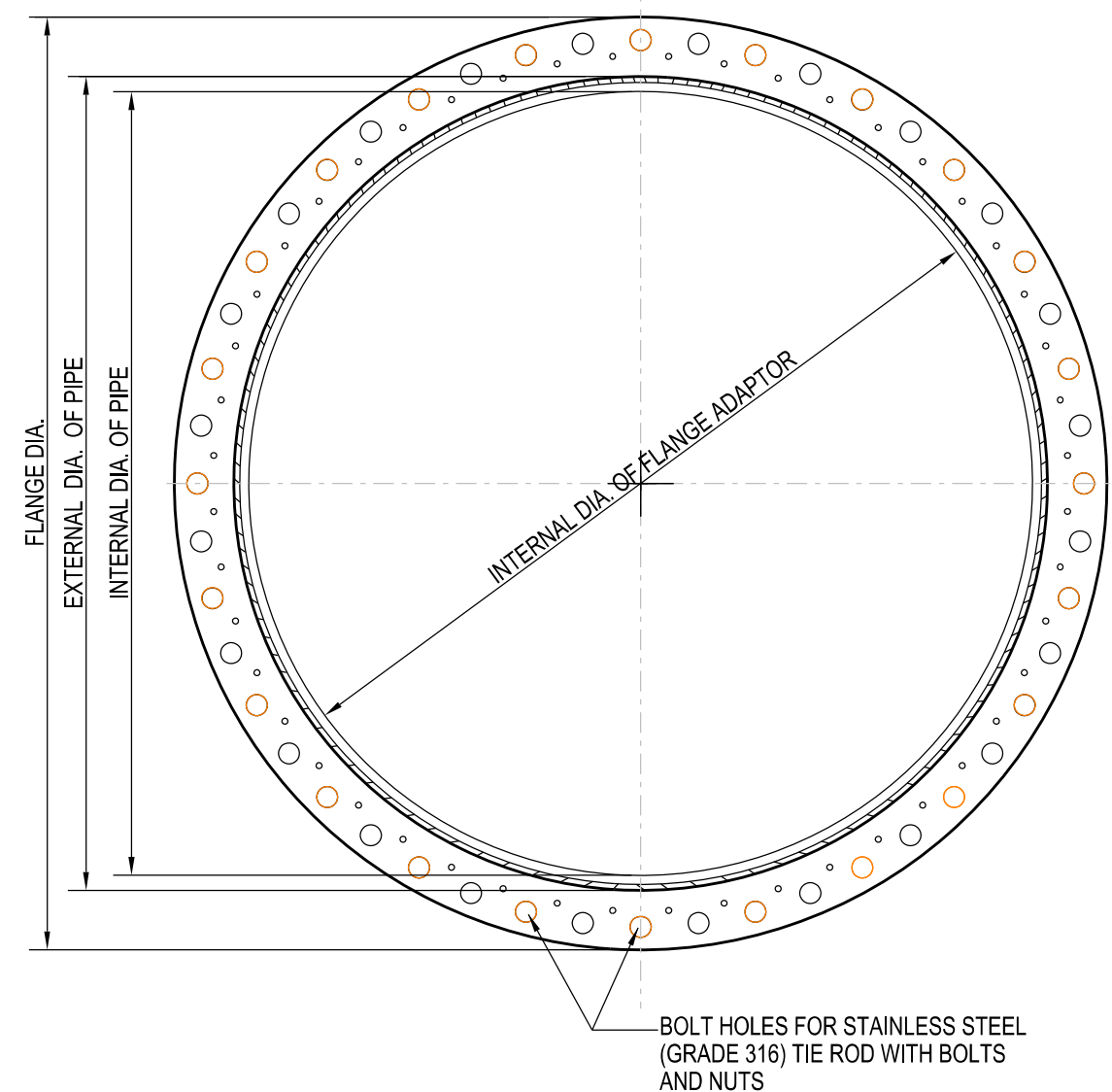
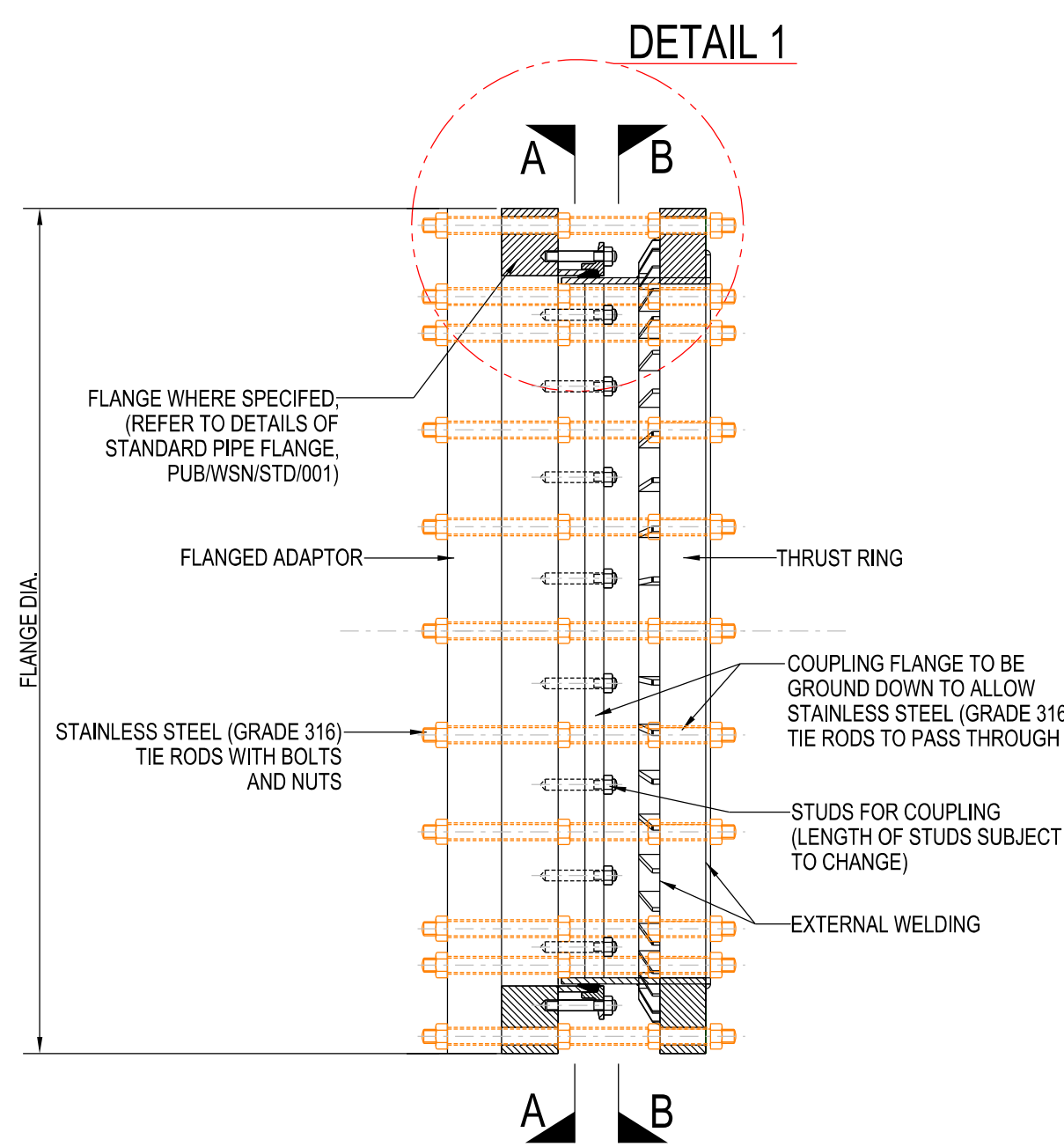


- NOTES:
1. ALL DIMENSIONS ARE IN MILLIMETRES UNLESS OTHERWISE STATED.
 2. REFER TO THE GENERAL NOTES IN DRAWING NO. PUB/WSN/GN/001.
 3. FLANGES OF DISMANTLING JOINT TO MATCH THE PIPE FLANGE, REFER TO DRAWING NO. PUB/WSN/STD/001.



DETAIL OF DISMANTLING JOINT (PN16)

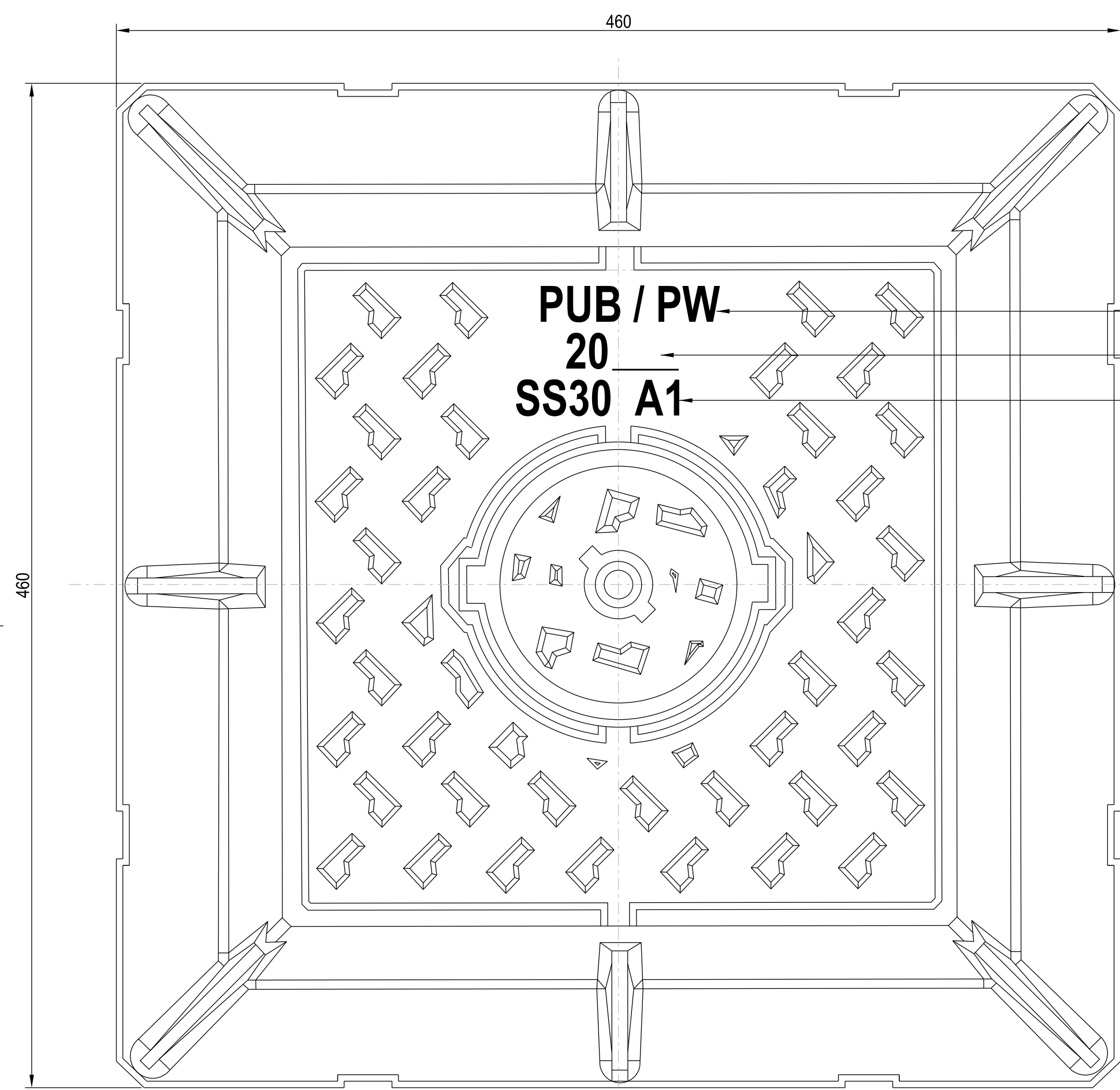
SCALE 1:20

NOTES:

A. THE STUDS COMPRESS THE GASKET AND SHALL BE INDEPENDENT OF THE TIE RODS.

B. CONTRACTOR NEEDS TO VERIFY WITH SUPPLIER THE MAXIMUM / MINIMUM LENGTH BEFORE FABRICATION OF TAIL PIECE.

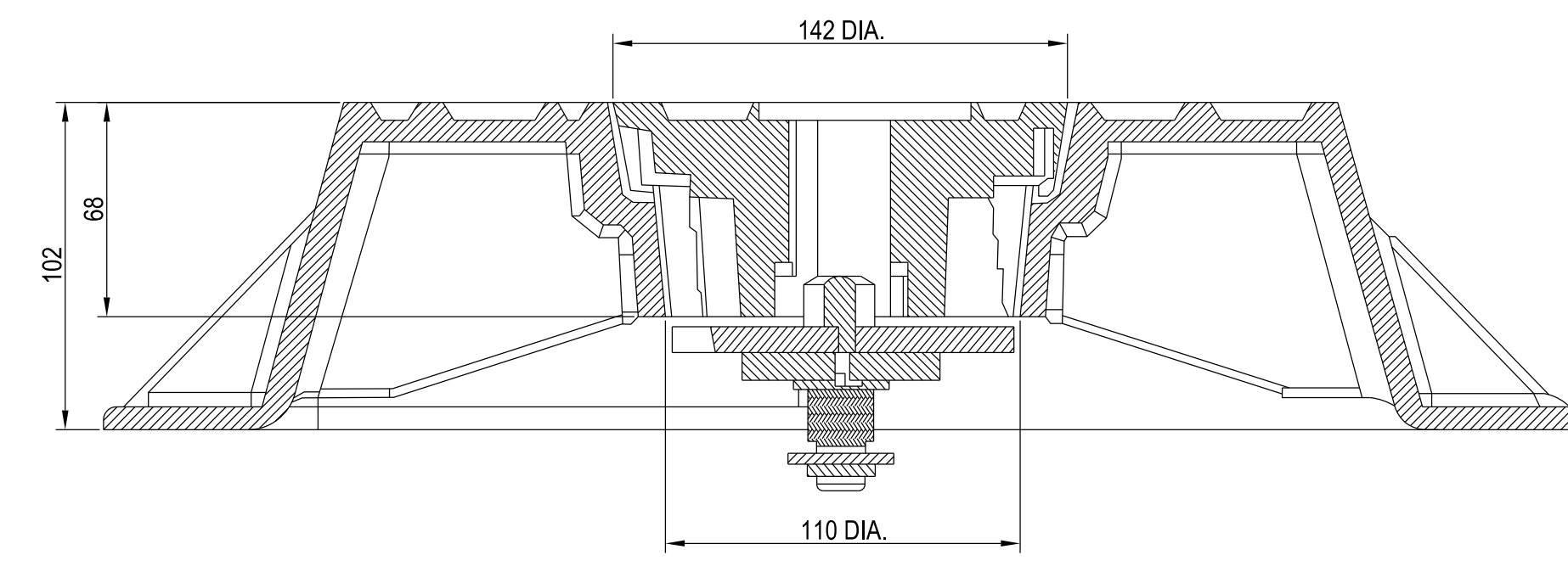
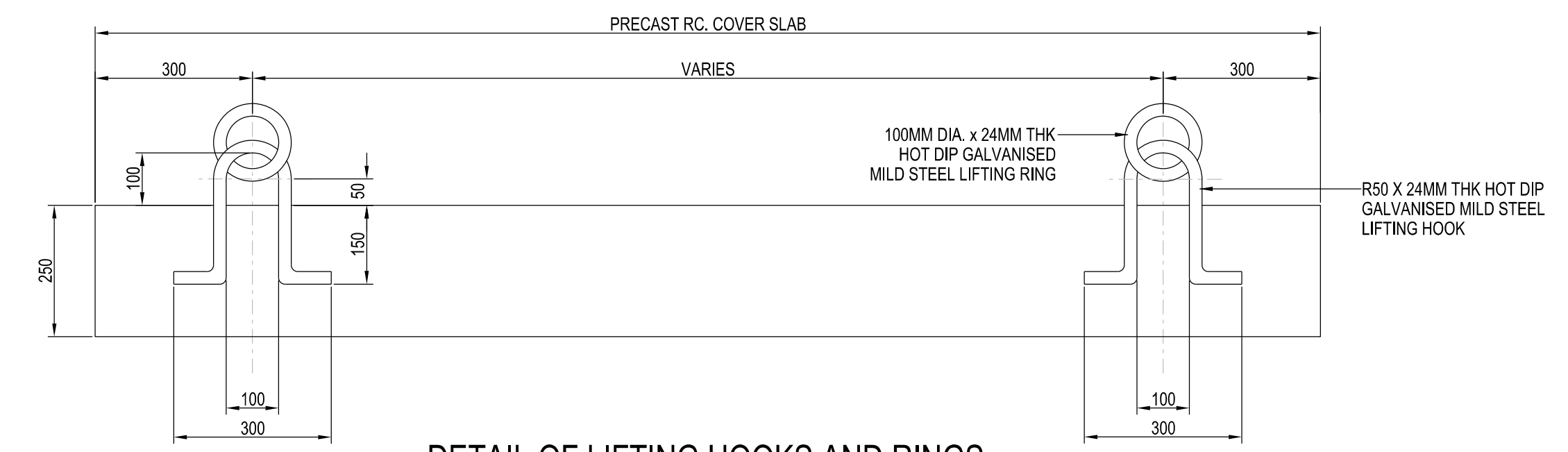
C. MAXIMUM LONGITUDINAL ADJUSTMENT = MAXIMUM LENGTH - MINIMUM LENGTH



REFER TO NOTE 5

YEAR OF MANUFACTURE

REFER TO NOTE 7



- NOTE:
- 1) THE MANHOLE COVER SHALL BE SECURED BY A PROPRIETARY LOCKING MECHANISM, WHERE A CODED KEY IS REQUIRED FOR UNLOCKING OPENING.
 - 2) THE MANHOLE COVERS SHALL BE DESIGNED TO WITHSTAND HEAVY VEHICULAR LOADING.
 - 3) THE MANHOLE COVERS SHALL COMPLY WITH THE MINIMUM SKID RESISTANCE OF 65 BPN AS STIPULATED IN LTA CODE OF PRACTICE FOR WORKS ON PUBLIC STREETS.
 - 4) MATERIAL FOR MANHOLE FRAME AND COVER SHALL BE SG IRON 500-7 IN ACCORDANCE TO EN 1563.
 - 5) LABEL ON MANHOLE COVERS SHALL BE:
PUB-PW FOR POTABLE WATER
PUB-NW FOR NEWATER
 - 6) MANHOLE COVERS FOR NEWATER PIPELINES SHALL BE PAINTED PURPLE (COLOUR CODE:22-C-37)
 - 7) THE TEST CERTIFICATE FROM A RECOGNISED INDEPENDENT TESTING AGENCY TO PROVE THE MANHOLE FRAME AND COVER COMPLIES WITH SINGAPORE STANDARD SS30, 'SPECIFICATION FOR MANHOLE TOPS AND SURFACE TOPS' OR EQUIVALENTS.

STANDARD KEYLESS MANHOLE FRAME AND COVER (FOR VALVE SPINDLES ALONG CARRIAGEWAY)

SCALE 1:2

DETAILS OF DISMANTLING JOINT, LIFTING RINGS WITH HOOKS AND KEYLESS MANHOLE FRAME & COVER

ISSUED: NOV 2020

LAST REVIEWED: NOV 2020

SCALE

AS SHOWN