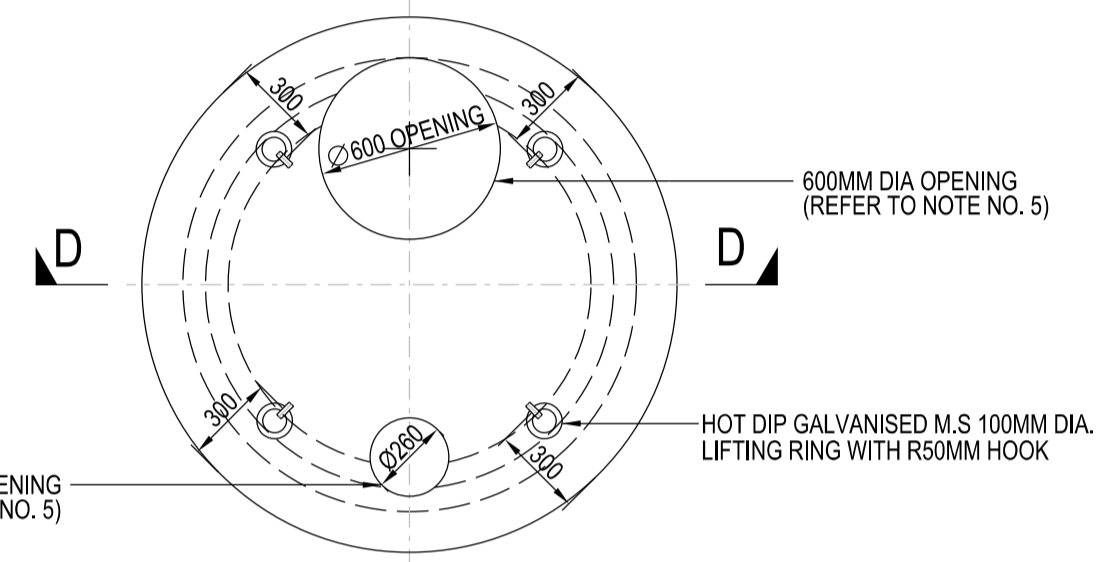
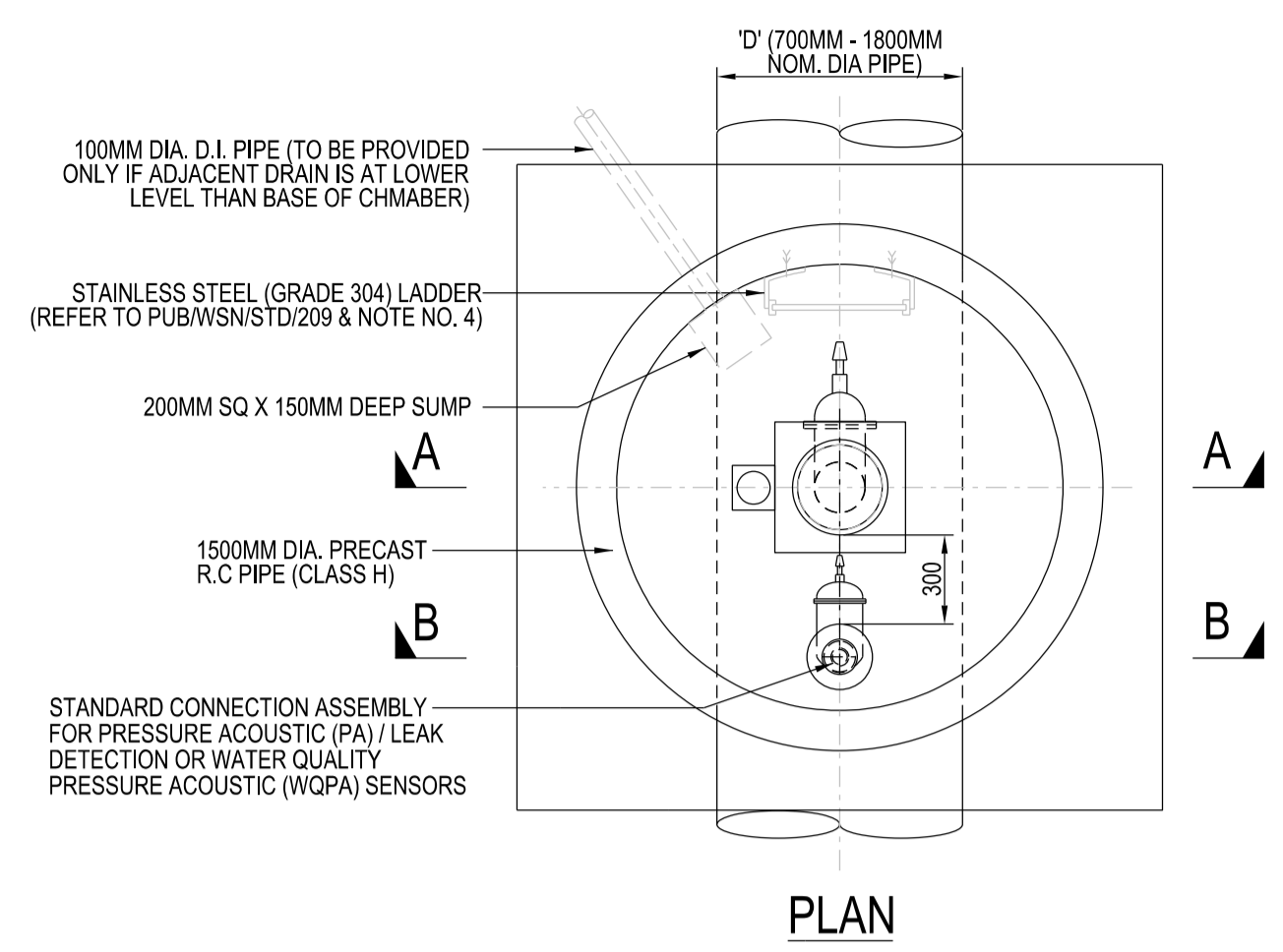
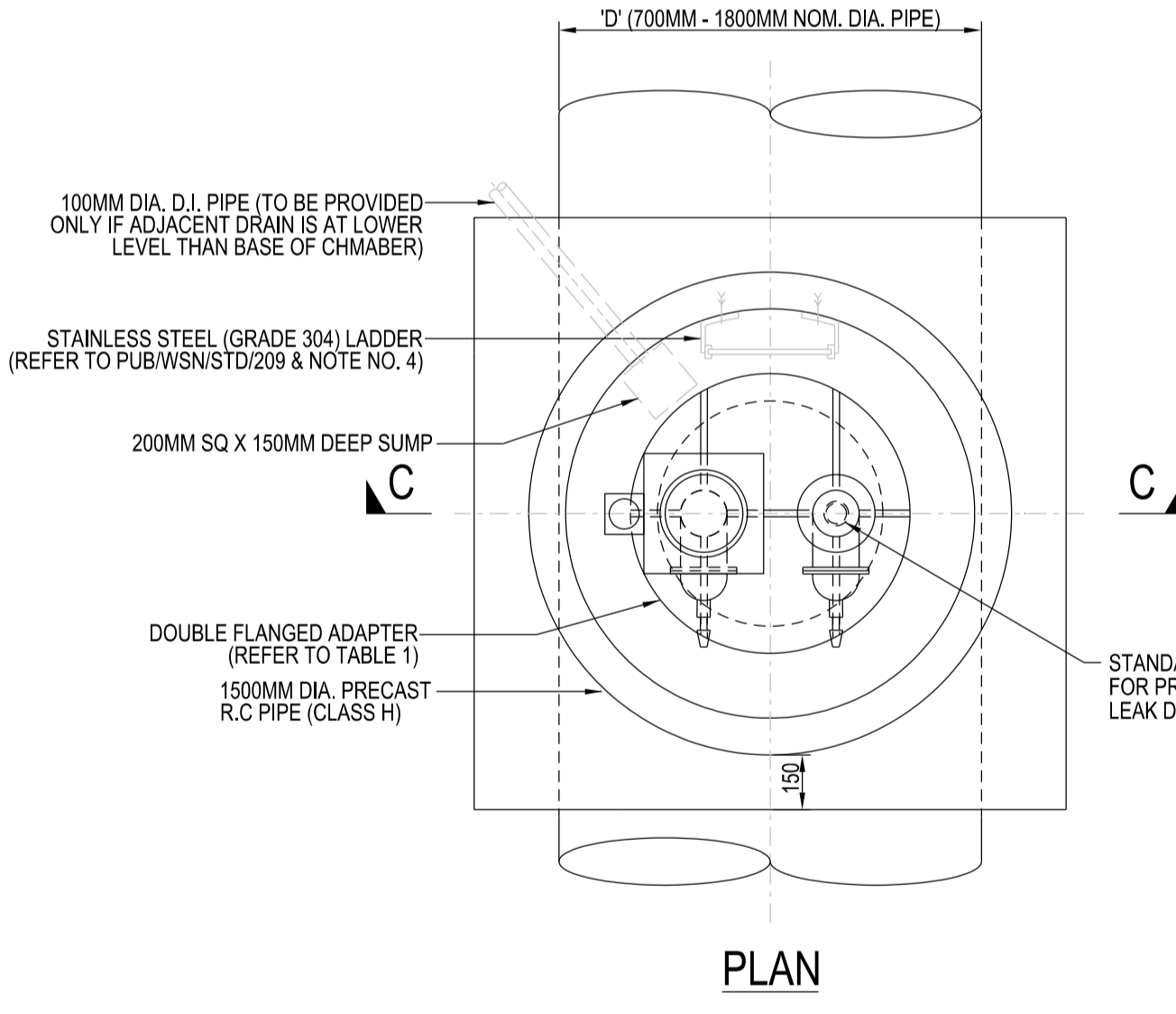


- NOTES:
- ALL DIMENSIONS ARE IN MILLIMETRES UNLESS OTHERWISE STATED.
  - THE CONTRACTOR SHALL REFER TO THE GENERAL NOTES IN DRAWING NO. PUB/WSN/100/1.
  - ALL CHAMBERS INCLUDING RC. HAUNCHING AND CLADDING SHALL BE DESIGNED AND ENDORSED BY A PROFESSIONAL ENGINEER (P.E.).
  - SAFETY CAGES SHALL BE INSTALLED FOR ALL STAINLESS STEEL LADDERS (GRADE 304) EXCEEDING 3M HEIGHT.
  - ALL MANHOLE COVERS AND FRAME SHALL BE OF HEAVY DUTY DUCTILE IRON TO GRADE A1 UNDER S530.
    - USE STANDARD HEAVY DUTY DUCTILE IRON (GRADE A1) DOUBLE TRIANGULAR MANHOLE COVER AND FRAME (REFER TO PUB/WSN/STD/204) FOR 600MM DIA. OPENING.
    - USE STANDARD HEAVY DUTY DUCTILE IRON (GRADE A1) MANHOLE COVER AND FRAME FOR VALVE SPINDLE (REFER TO PUB/WSN/STD/219) FOR 250MM DIA. OPENING.
  - ASSEMBLY FOR LEAK DETECTION SENSORS ARE TO BE INSTALLED AT NOT MORE THAN 750M C/C ALONG THE PIPELINE. THE LEAK DETECTION SENSORS WILL BE INSTALLED UNDER SEPARATE CONTRACT.
  - THE CONSULTANT'S P.E. SHALL UNDERTAKE THE DETAILED DESIGN OF THE CHAMBER AND SUBMIT TOGETHER WITH THE ACCREDITED CHECKER APPOINTED BY THE BOARD) TO SUPERINTENDING OFFICER (S.O.) AND BCA FOR APPROVAL.



PLAN OF PRECAST COVER SLAB FOR AIR VALVE CHAMBER (WITHOUT ACCESS MANHOLE)  
SCALE 1:25



AIR VALVE CHAMBER (WITH ACCESS MANHOLE)  
SCALE 1:25

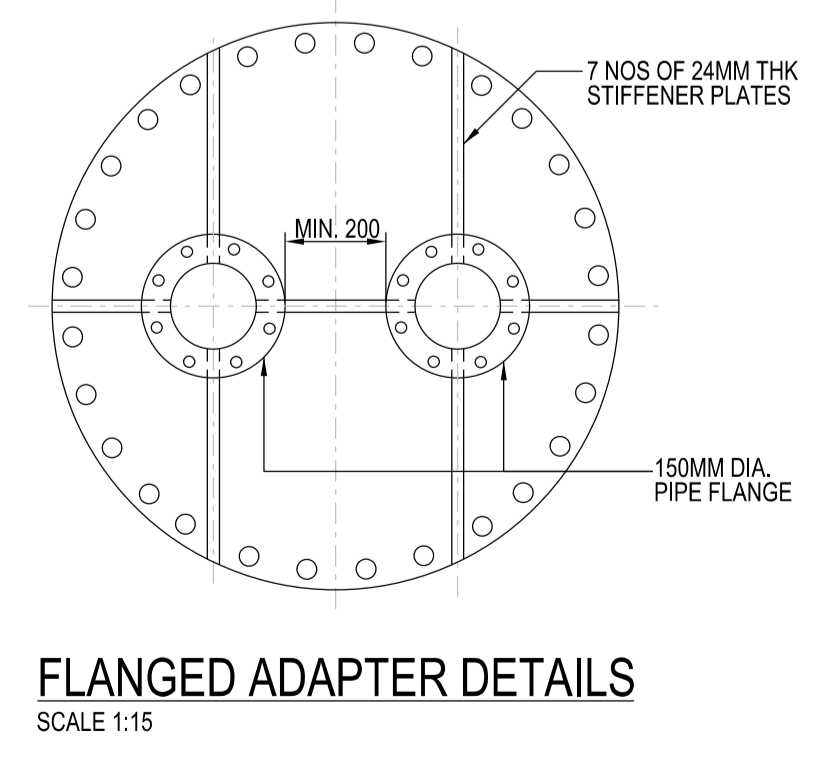
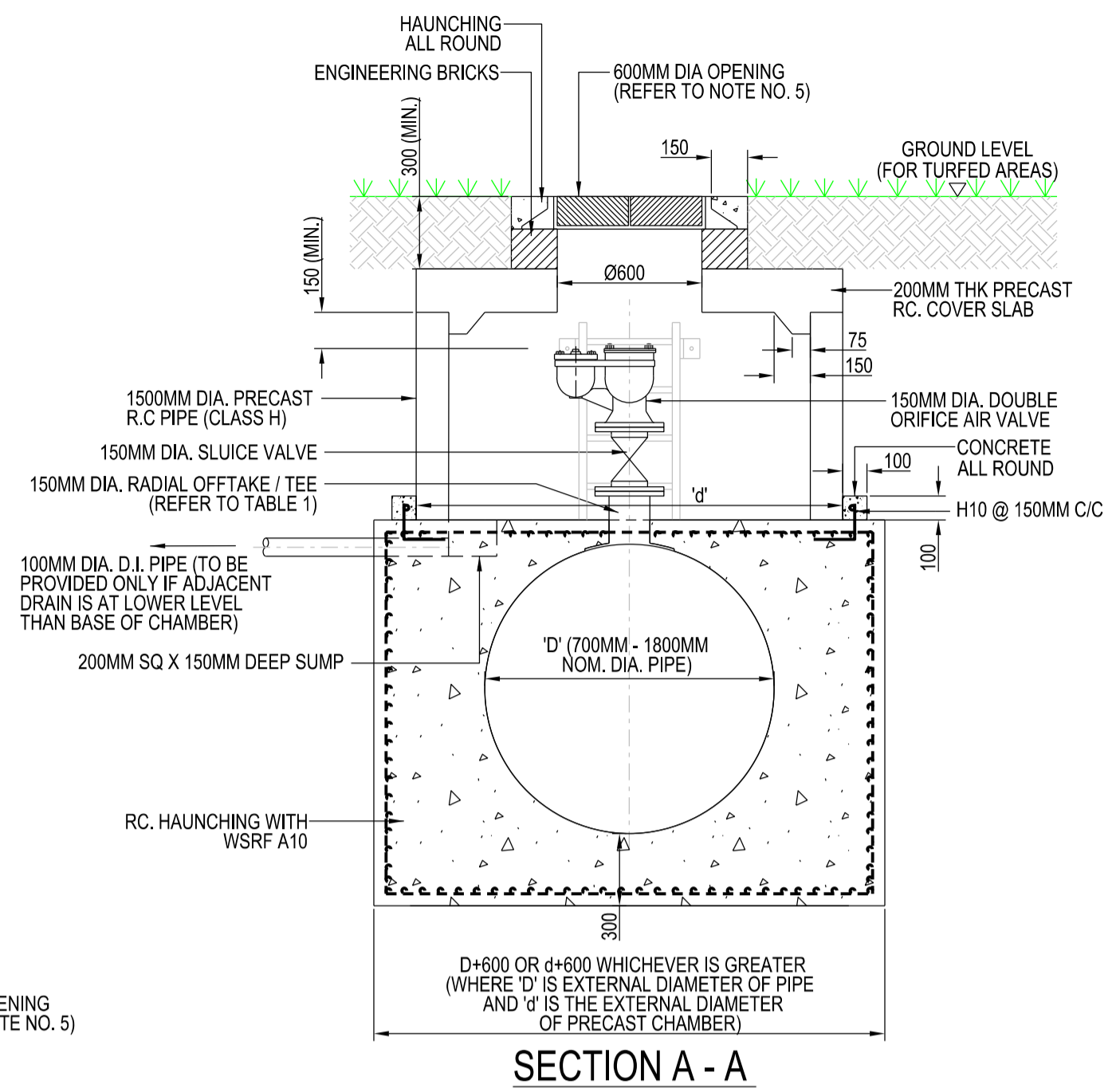
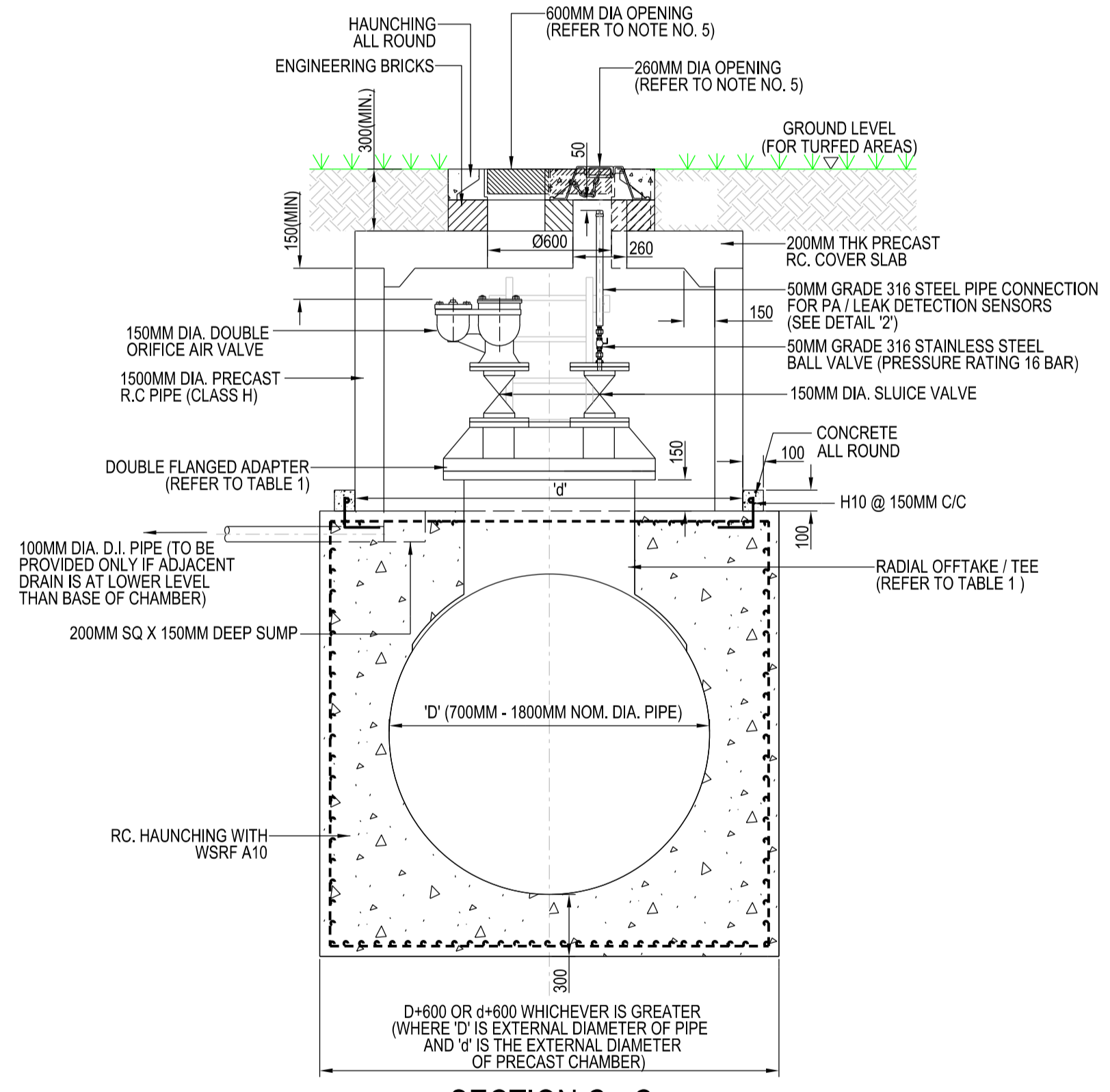


TABLE 1: ACCESS MANHOLE

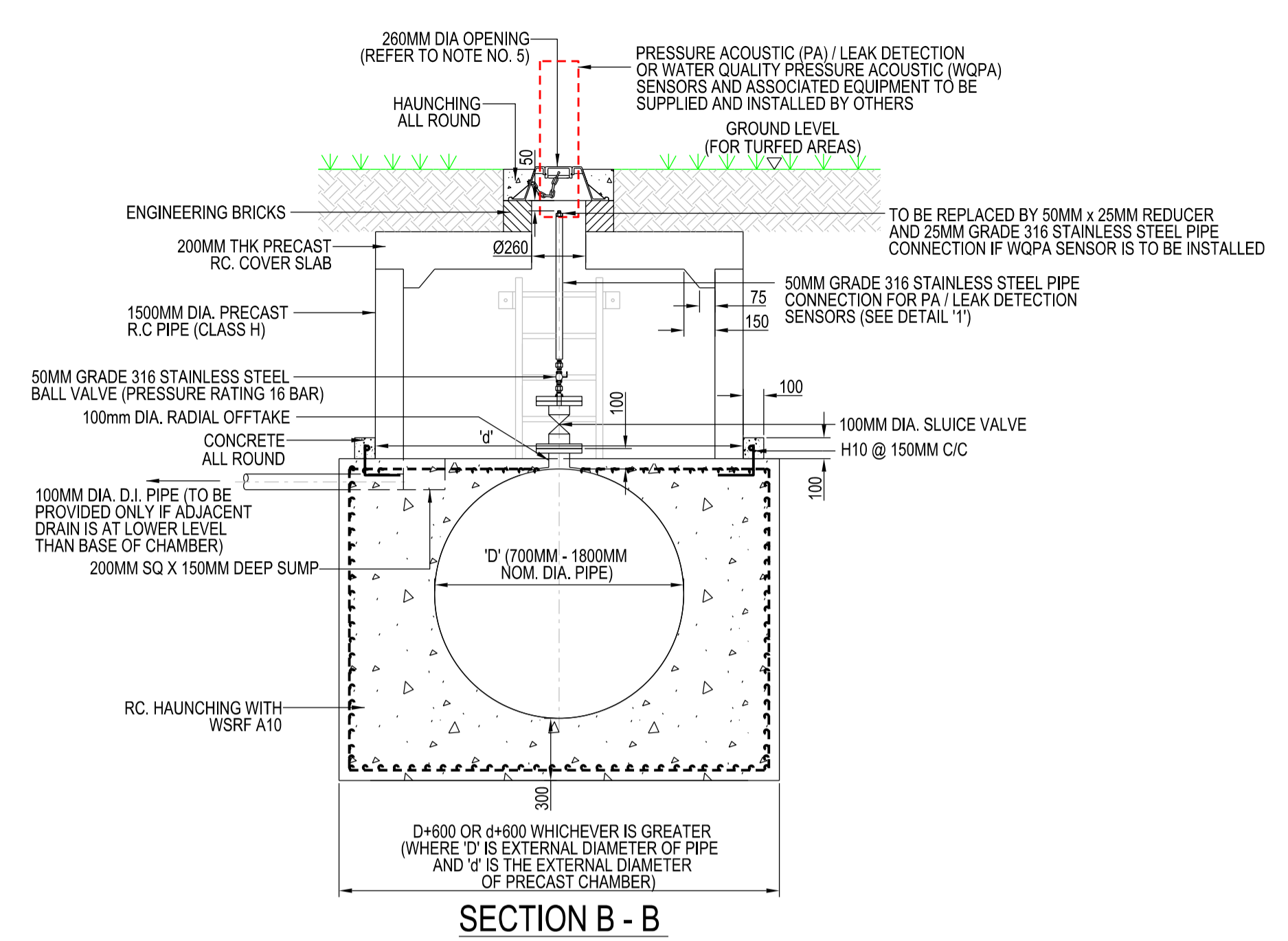
PIPE NOM. DIA. (MM)	RADIAL OFFTAKE / TEE DIA. (MM)	DOUBLE FLANGED ADAPTER (MM)	HEIGHT (H) OF RADIAL OFFTAKE / TEE (MM)
700	700 (TEE)	700 X 150	350
800	800 (TEE)	800 X 150	350
900	800 (TEE)	800 X 150	375
1200	800 (TEE)	800 X 150	370
1400	800 (TEE)	800 X 150	490
1600	800 (RADIAL OFFTAKE)	800 X 150	455
1800	800 (RADIAL OFFTAKE)	800 X 150	455



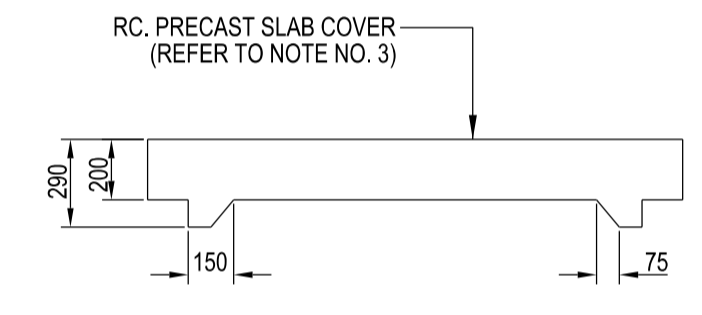
AIR VALVE CHAMBER (WITHOUT ACCESS MANHOLE)  
SCALE 1:25



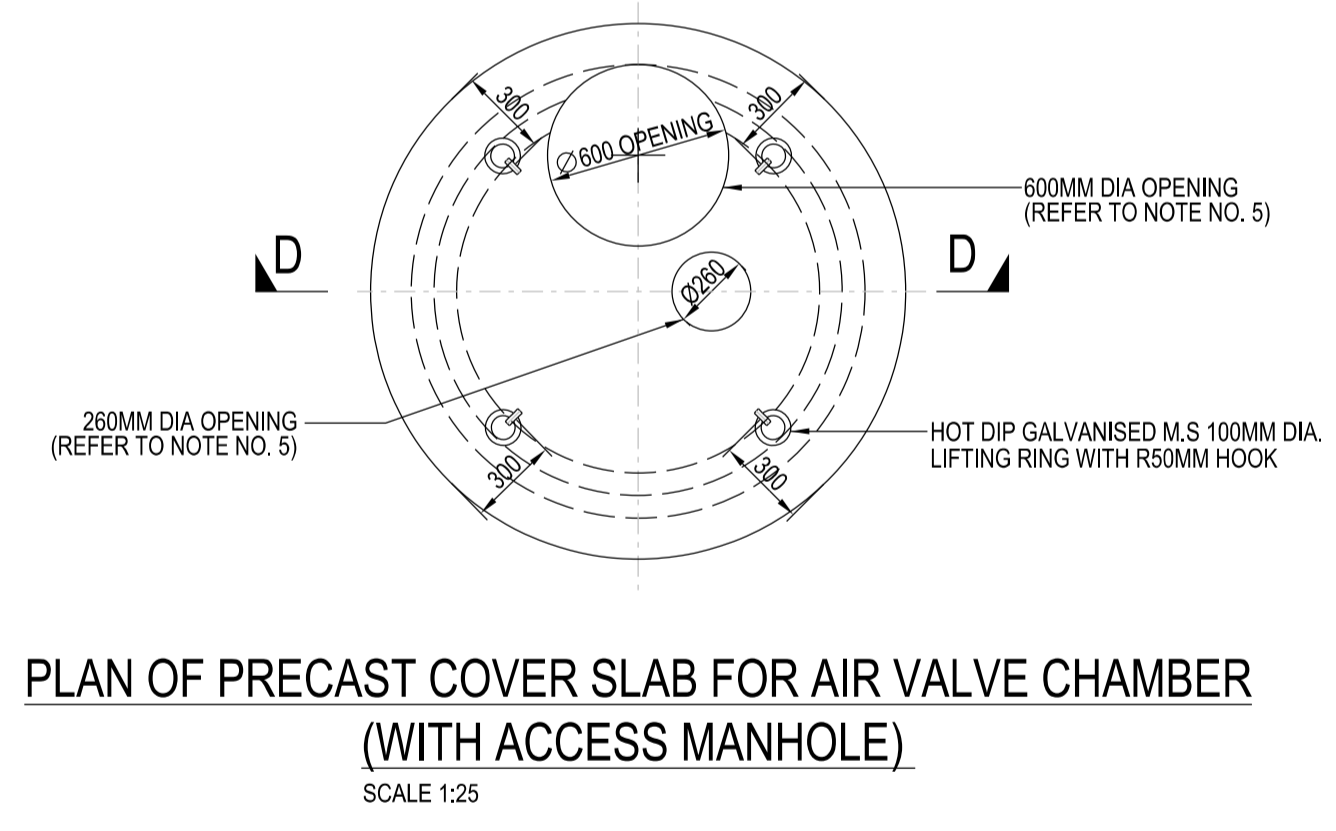
SECTION C - C



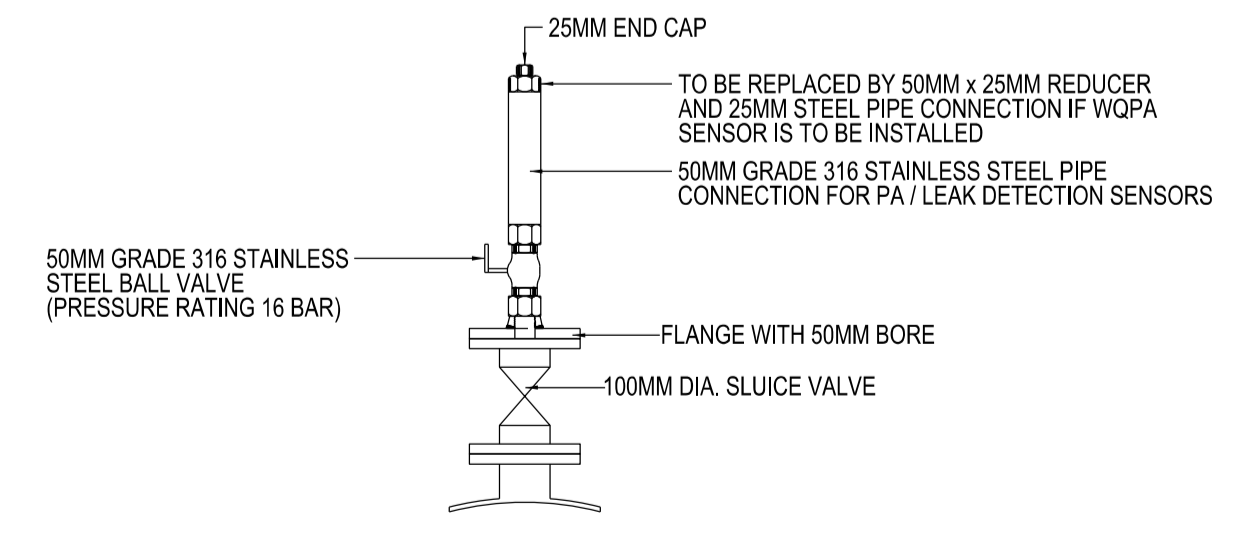
SECTION B - B



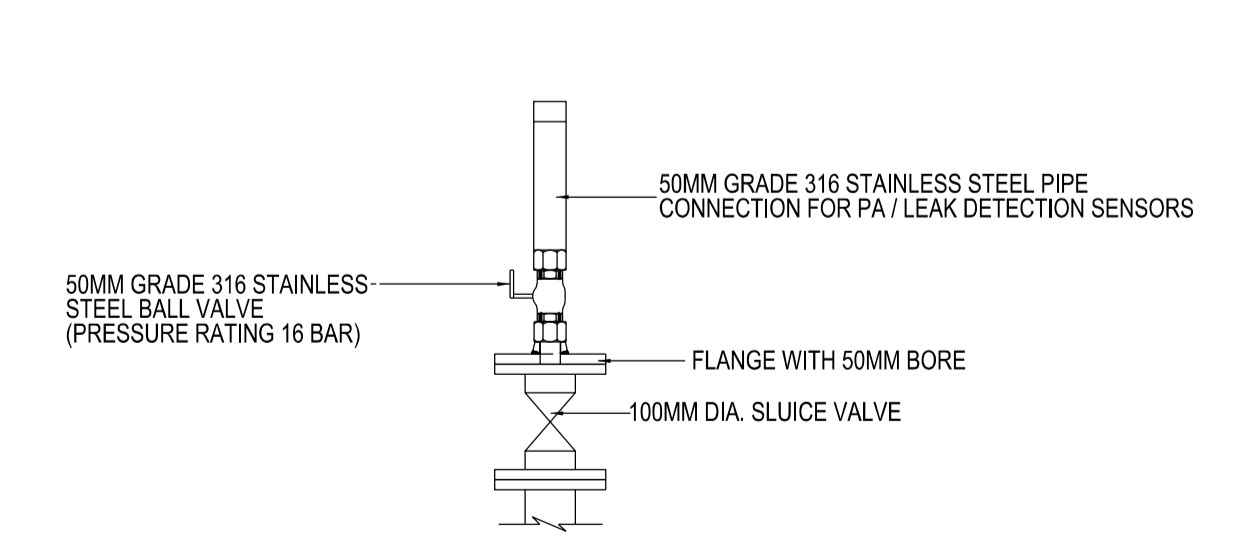
SECTION D - D  
SCALE 1:25



PLAN OF PRECAST COVER SLAB FOR AIR VALVE CHAMBER (WITH ACCESS MANHOLE)  
SCALE 1:25



STANDARD SENSOR ASSEMBLY [FOR WATER QUALITY PRESSURE ACOUSTIC (WQPA) AND PRESSURE ACOUSTIC (PA) / LEAK DETECTION SENSORS]  
SCALE 1:15



STANDARD SENSOR ASSEMBLY [FOR PRESSURE ACOUSTIC (PA) / LEAK DETECTION SENSORS]  
SCALE 1:15

ISSUED: SEP 2020  
LAST REVIEWED: AUG 2021

SCALE  
AS SHOWN

DRAWING NO.  
PUB/WSN/STD/105

TYPICAL AIR VALVE CHAMBER WITH PA / LEAK DETECTION OR WQPA SENSORS (FOR 700MM - 1800MM DIA. PIPELINES)

