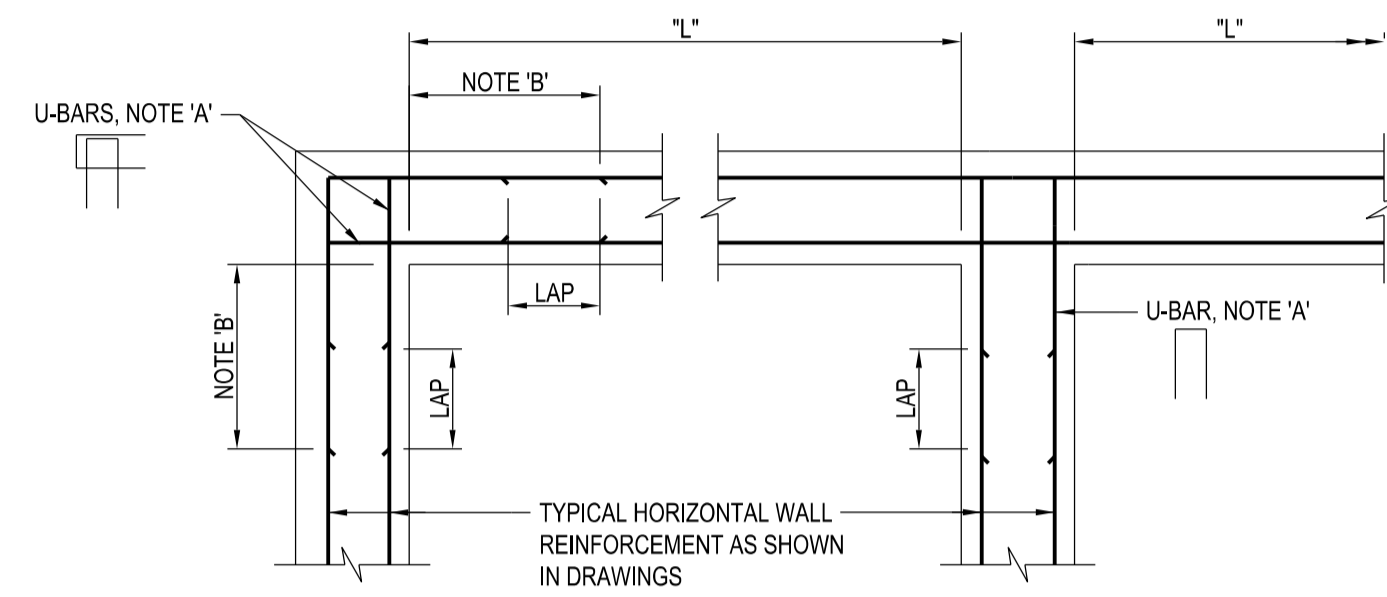


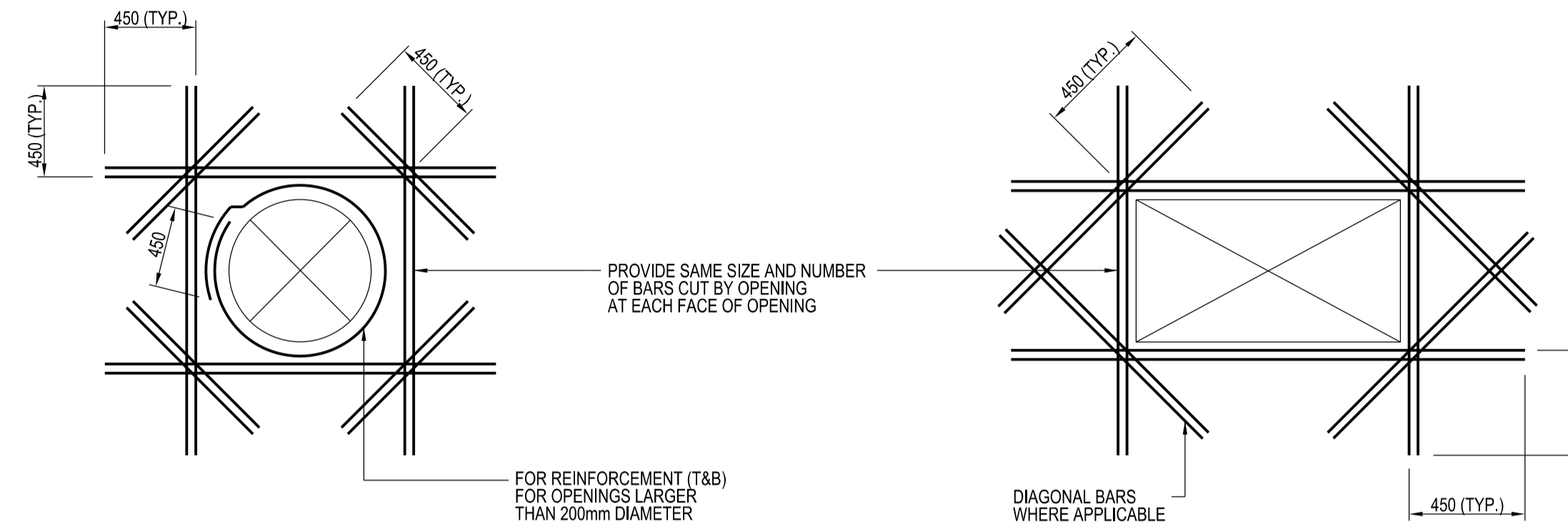
DETAILS OF SINGLE REINFORCEMENT



DETAILS OF DOUBLE REINFORCEMENT

TYPICAL WALL CORNER AND INTERSECTION REINFORCEMENT

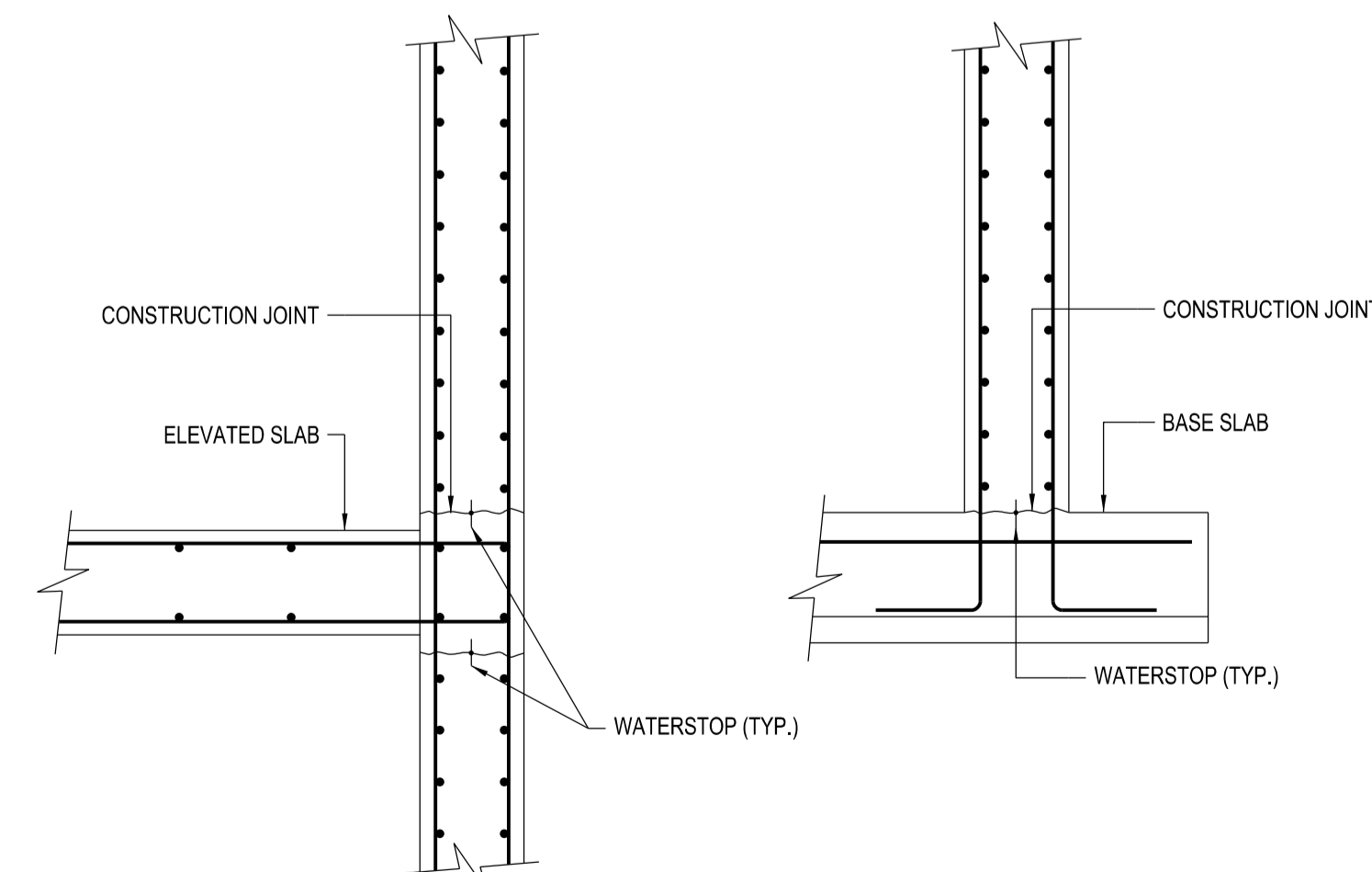
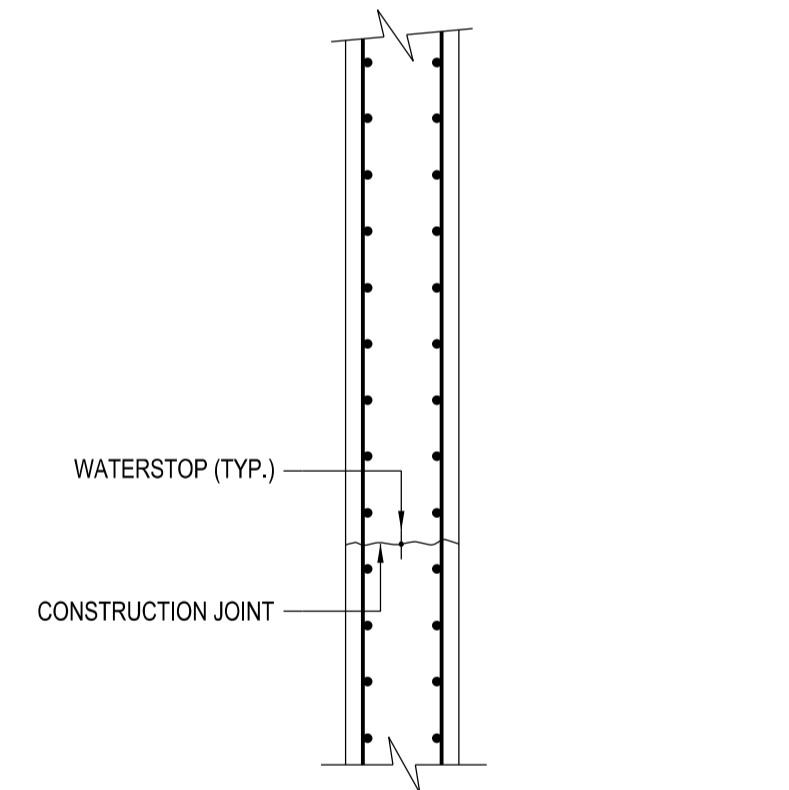
- NOTES:
- A. U-BARS SHALL MATCH SIZE OF TYPICAL HORIZONTAL REINFORCEMENT.
 - B. THE LENGTH INDICATED AS "NOTE 2" SHALL BE THE LESSER OF L/4, 3 METRE OR 1.0 TIMES THE HEIGHT OF THE WALL, EXCEPT THAT IN NO CASE SHALL IT BE LESS THAN 600mm.



DETAILS OF OPENING REINFORCEMENT

- NOTES:
- A. TYPICAL FOR ALL OPENINGS IN RC WALLS AND SLABS UNLESS STATED OTHERWISE.
 - B. DO NOT WELD REINFORCEMENT TO PIPE SLEEVES AND INSERTS.
 - C. SPACE AT 3 BAR DIAMETERS (OR 75mm MINIMUM) ON CENTRE.

- NOTES:
- 1. ALL DIMENSIONS ARE IN MILLIMETRES UNLESS OTHERWISE STATED.
 - 2. REFER TO THE GENERAL NOTES IN DRAWING NO. PUB/WSN/GN/001.
 - 3. ALL REINFORCED CONCRETE ELEMENTS SHALL BE OF GRADE C40/50.
 - 4. ALL REINFORCEMENT SHALL BE LAPPED AT MINIMUM 4 X BAR DIAMETER, UNLESS STATED OTHERWISE. WHERE LAPPED BARS ARE OF DIFFERENT SIZE, USE THE LAP LENGTH REQUIRED FOR THE SMALLER OF THE TWO REINFORCEMENT BARS BEING SPLICED.



DETAILS OF WALL CONSTRUCTION JOINT

ISSUED: NOV 2020

SCALE

DRAWING NO.

LAST REVIEWED: AUG 2021

NTS

PUB/WSN/STD/211

WALL REINFORCEMENT, OPENING REINFORCEMENT, WALL CONSTRUCTION JOINT DETAIL