

ACCESS MANHOLE CHAMBER WITH SENSORS
(PIPE NOMINAL DIAMETER 700 - 2200MM)
SCALE 1:25

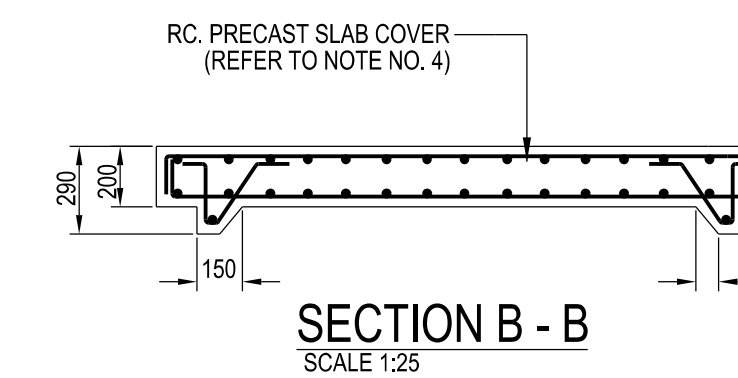
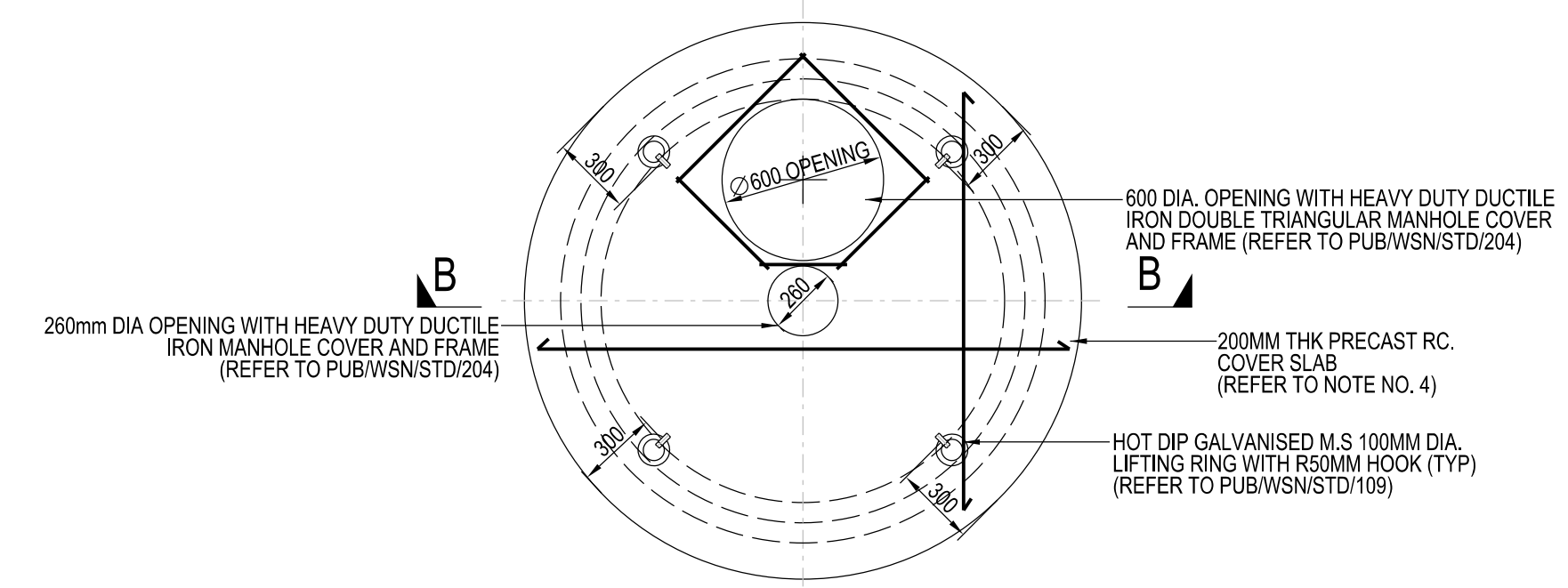
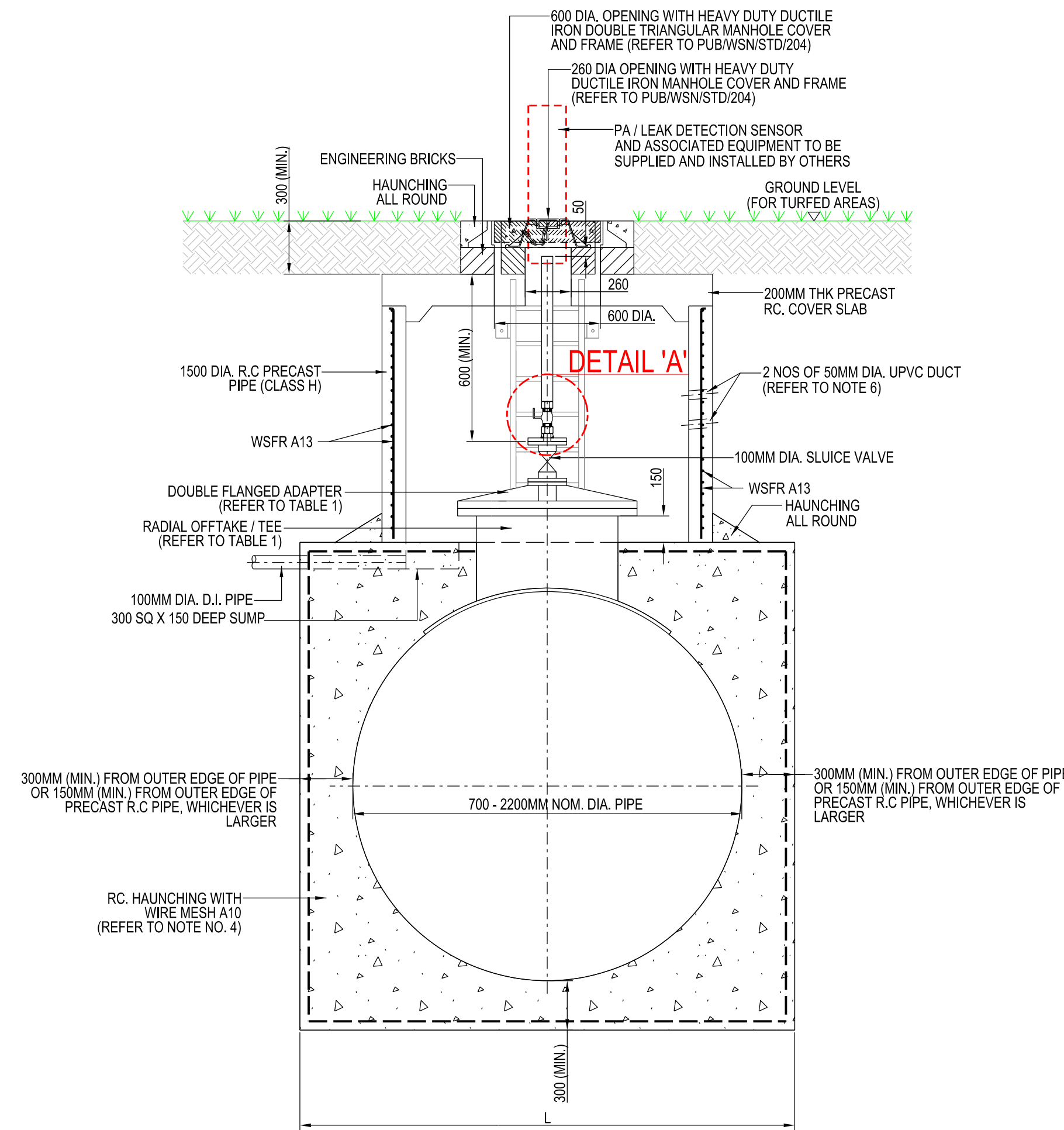
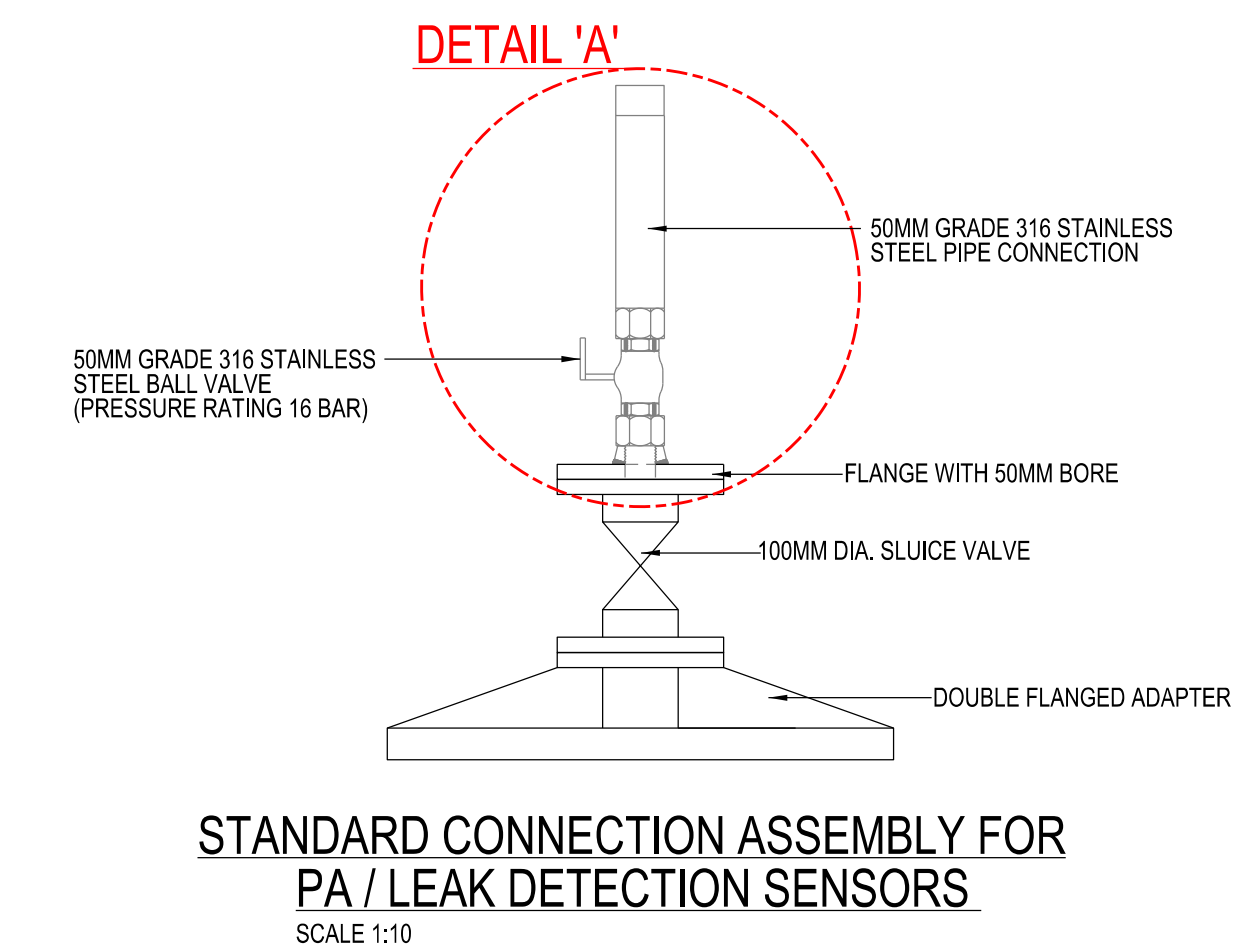
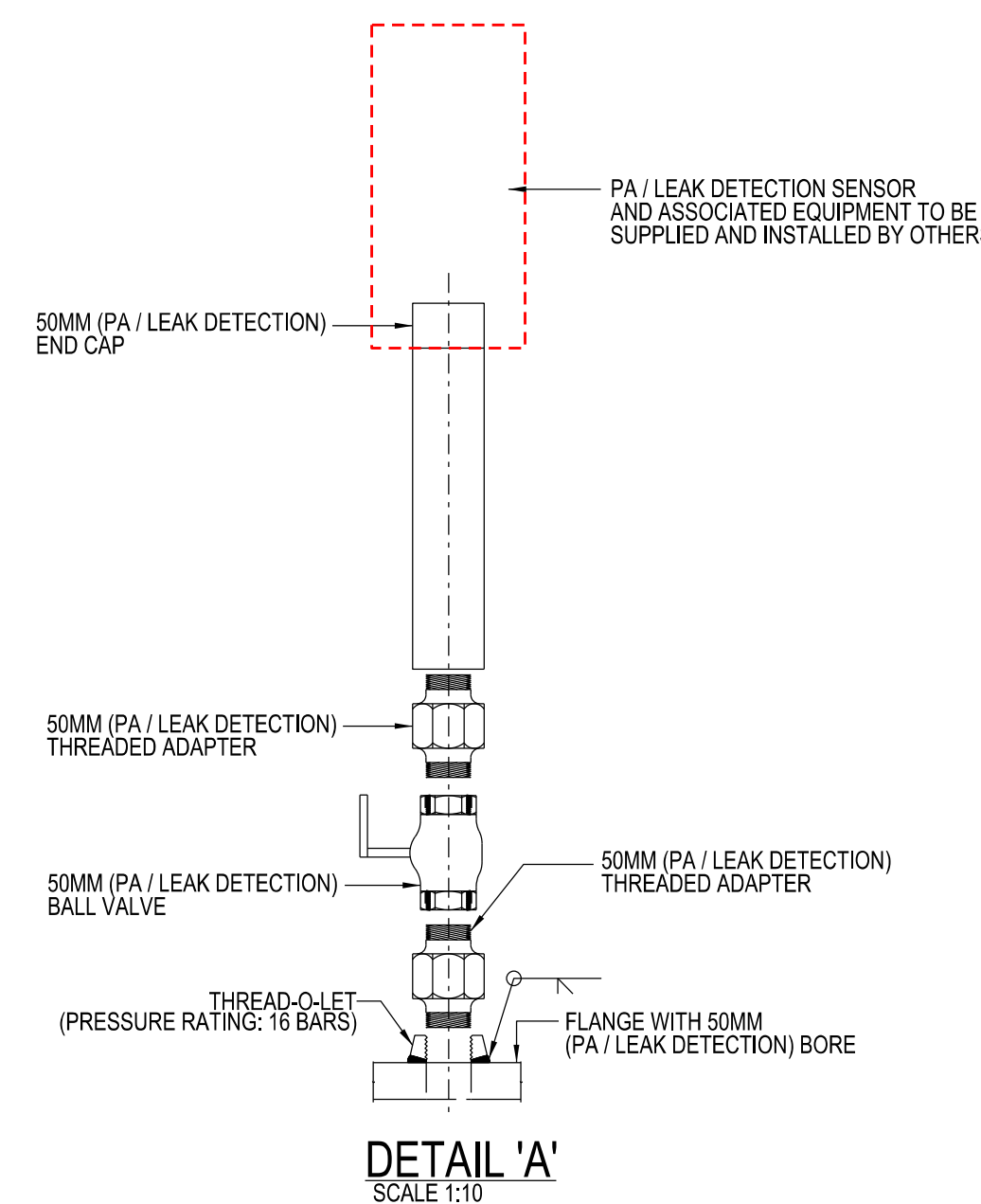


TABLE 1: ACCESS MANHOLE CHAMBER

PIPE NOM. DIA. (MM)	RADIAL OFFTAKE / TEE DIA. (MM)	PRECAST R.C PIPE DIA. (MM)	DOUBLE FLANGED ADAPTER (MM)	INTERVAL ALONG PIPELINE (M)
700	700 (TEE)	1500	700X100	100
800	800 (TEE)	1500	800X100	100
900	800 (TEE)	1500	800X100	100
1200	800 (TEE)	1500	800X100	200
1400	800 (TEE)	1500	800X100	200
1600	800 (RADIAL OFFTAKE)	1500	800X100	300
1800	800 (RADIAL OFFTAKE)	1500	800X100	300
1900	800 (RADIAL OFFTAKE)	1500	800X100	300
2200	800 (RADIAL OFFTAKE)	1500	800X100	300



- NOTES:
- ALL DIMENSIONS ARE IN MILLIMETRES UNLESS OTHERWISE STATED.
 - THE CONTRACTOR SHALL REFER TO THE GENERAL NOTES IN DRAWING NO. PUB/WSN/001.
 - LOCATION OF 50MM CONNECTION FOR PRESSURE ACOUSTIC / LEAK DETECTION SENSOR TO BE CONFIRMED ON SITE.
 - ALL CHAMBERS INCLUDING RC. HAUNCHING AND CLADDING SHALL BE DESIGNED AND ENDORSED BY A PROFESSIONAL ENGINEER (P.E.).
 - SAFETY CAGES SHALL BE INSTALLED FOR ALL STAINLESS STEEL LADDERS (GRADE 304) EXCEEDING 3M HEIGHT.
 - UPVC DUCTS SHALL BE INCORPORATED INTO THE CHAMBER WALLS FOR LAYING OF CABLES. BY OTHERS. THE DUCTS SHALL BE SEALED WITH WATERPROOF SEALING COMPOUND. POSITION OF DUCTS ARE INDICATIVE AND SHALL BE CONFIRMED ON SITE.
 - LEAK DETECTION SENSORS ARE TO PROVIDED AT EVERY 750M C/C INTERVAL ALONG PIPELINE.
 - THE DRAWING SHOWS THE TYPICAL ARRANGEMENT OF REINFORCEMENT WITHIN THE CONCRETE ELEMENTS. THIS IS FOR REFERENCE ONLY. THE P.E. SHALL UNDERTAKE DETAILED CALCULATIONS TO DETERMINE THE DETAILS OF THE REBAR REQUIRED AND SUBMIT (TOGETHER WITH THE ACCREDITED CHECKER, APPOINTED BY THE BOARD) TO BCA FOR APPROVAL.

ISSUED: SEP 2020

SCALE

LAST REVIEWED: SEP 2020

AS SHOWN

TYPICAL ACCESS MANHOLE CHAMBER WITH SENSORS (UP TO 6M DEPTH)