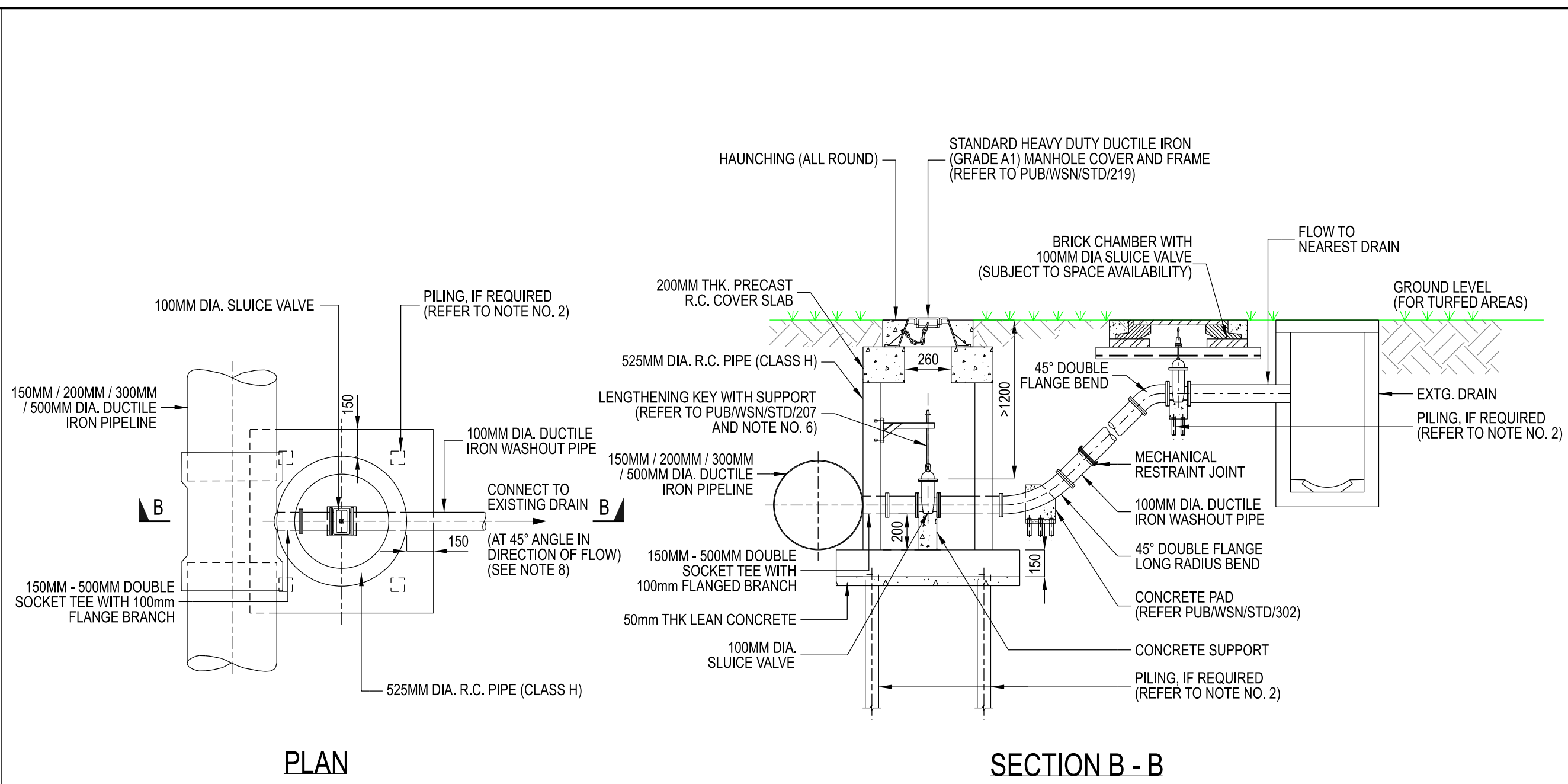


PLAN

SECTION A - A

TYPICAL WASHOUT CONFIGURATION WITH BRICK CHAMBER FOR OFFTAKE SLUICE VALVE (FOR DEPTH OF BONNET OF SLUICE VALVE <1.2M FROM GROUND LEVEL)

NOTE: ALTERNATIVE OPTION IS TO INSTALL GROUND HYDRANT IF SITE CONDITION DOES NOT PERMIT THE INSTALLATION OF SLUICE VALVE AND WASHOUT PIPE TO THE DRAIN (REFER TO DRAWING NO. PUB/WSN/STD/210)



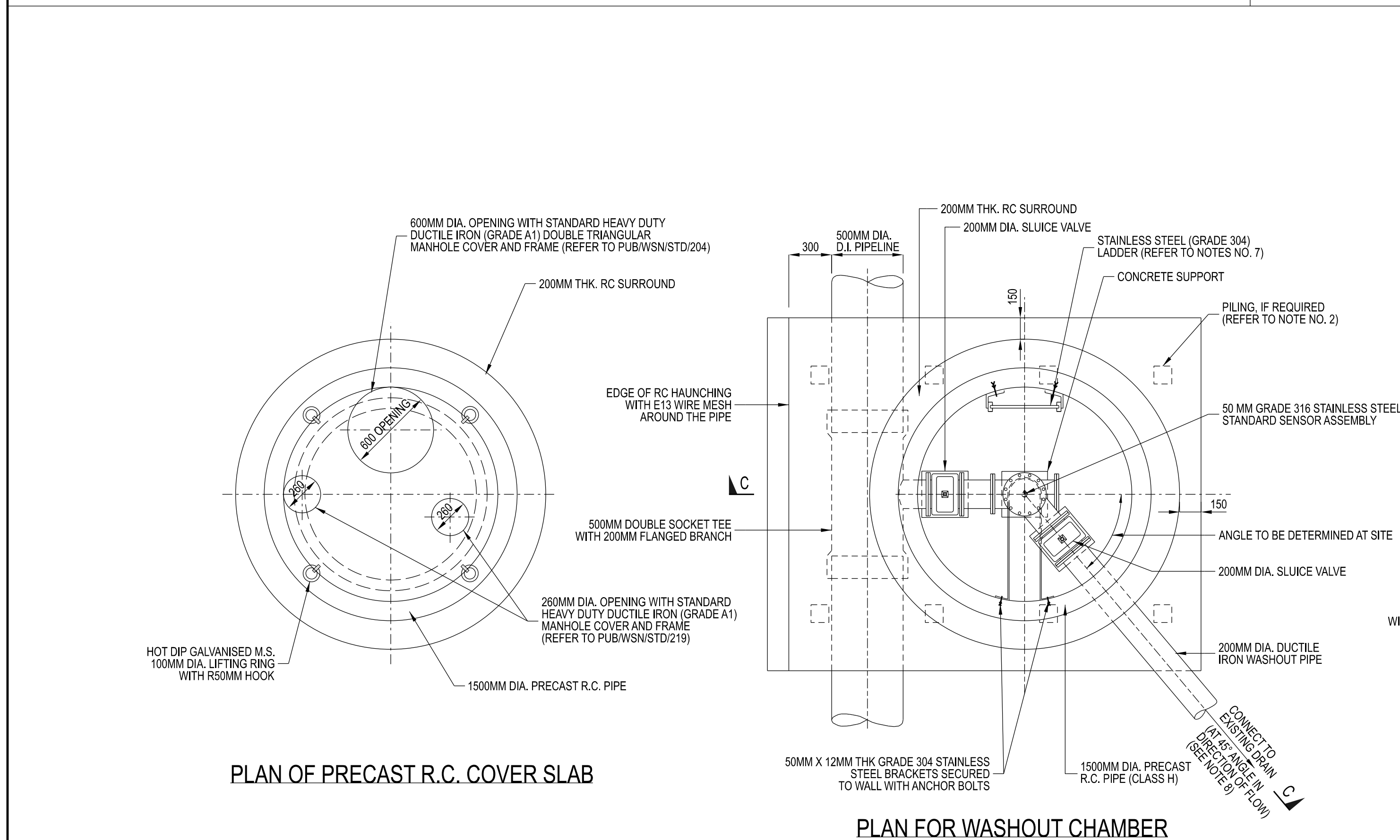
PLAN

SECTION B - B

TYPICAL WASHOUT CONFIGURATION WITH PRECAST WASHOUT CHAMBER FOR OFFTAKE SLUICE VALVE (FOR DEPTH OF BONNET OF SLUICE VALVE >1.2M FROM GROUND LEVEL)

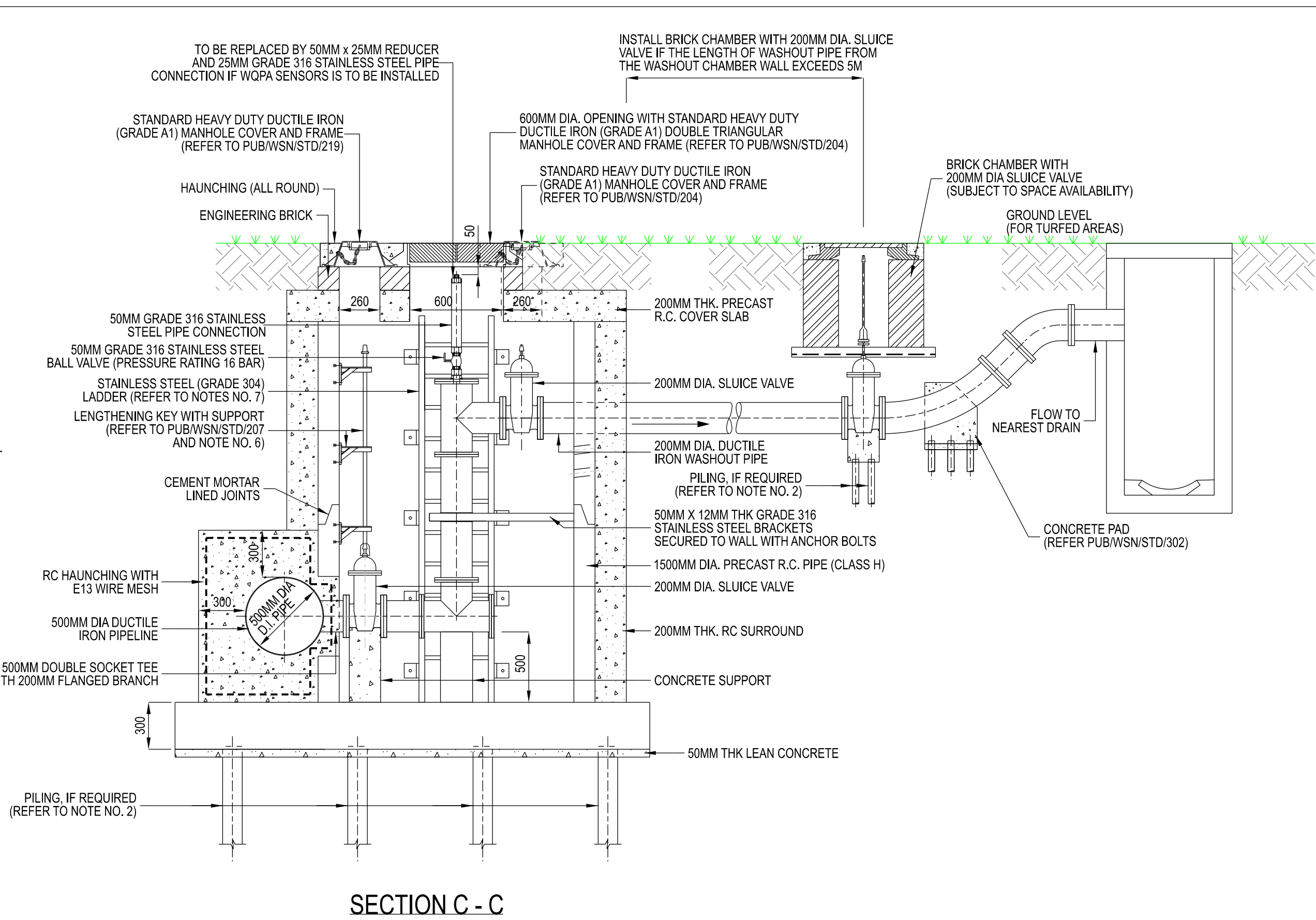
NOTE: ALTERNATIVE OPTION IS TO INSTALL GROUND HYDRANT IF SITE CONDITION DOES NOT PERMIT THE INSTALLATION OF SLUICE VALVE AND WASHOUT PIPE TO THE DRAIN (REFER TO DRAWING NO. PUB/WSN/STD/210)

- NOTES:
1. ALL DIMENSIONS ARE IN MILLIMETRES UNLESS OTHERWISE STATED.
 2. THE CONTRACTOR SHALL UNDERTAKE PLATE LOAD TESTS TO VERIFY THE IN-SITU SOIL BEARING CAPACITY IN ACCORDANCE WITH BS EN ISO 22476-13. WHERE THE BEARING CAPACITY IS DEEMED INADEQUATE AND/OR SETTLEMENT IS EXCESSIVE, THE CHAMBER SHALL BE SUPPORTED ON PILES.
 3. 40MM THK APPROVED JOINT SEALING COMPOUND TO BE APPLIED TO WASHOUT PIPE WHERE IT PUNCTURES THE PRECAST RC. PIPE.
 4. PLEASE REFER TO STANDARD DRAWING PUB/WSN/STD/302 FOR DETAILS OF CONCRETE PADS, THRUST AND ANCHOR BLOCKS TO BE INSTALLED AT THE BENDS AND TEE.
 5. OPENINGS SHALL BE CENTRED OVER THE VALVE SPINDLES. POSITION OF OPENINGS ARE INDICATIVE AND SHALL BE CONFIRMED ON SITE.
 6. LENGTHENING KEYS FOR VALVES SHALL EXTEND WITHIN 150MM BELOW THE SOFFIT OF THE PRECAST RC. COVER SLAB.
 7. SAFETY CAGE SHALL BE INSTALLED FOR ALL STAINLESS STEEL LADDERS (GRADE 304) EXCEEDING 3M HEIGHT.
 8. HEIGHT OF WASHOUT PIPE OUTLET SHALL BE AS HIGH AS POSSIBLE ABOVE THE DRAIN INVERT AND WHERE FEASIBLE, ABOVE THE TOP WATER LEVEL IN THE DRAIN. THE CONTRACTOR SHALL CONSULT THE CATCHMENT AND WATERWAY DEPARTMENT, PUB, ON THE LOCATION OF THE WASHOUT PIPE OUTLET AND LEVEL OF DISCHARGE INTO THE DRAIN.
 9. THE CHAMBER SHALL BE LOCATED OUTSIDE DRAINAGE RESERVE (IF ANY) OR AT LEAST 300MM AWAY FROM DRAIN STRUCTURE.
 10. THE WASHOUT PIPE DISCHARGE POINT SHALL BE LOCATED NEXT TO THE MILD STEEL GRATING COVER OF AN EXISTING DRAIN. PLEASE REFER TO STANDARD DRAWING NO. PUB/WSN/STD/119.



PLAN OF PRECAST R.C. COVER SLAB

PLAN FOR WASHOUT CHAMBER



SECTION C - C

WASHOUT CHAMBER >2.0M DEPTH FOR 500MM DIA. DUCTILE IRON PIPELINE

DRAWING NO.: PUB/WSN/STD/320	
DATE OF ISSUE: DEC 2022	SCALE: NTS
REV.	DATE

100MM / 150MM DIA. WASHOUT CHAMBER FOR 100MM - 500MM DIA. DUCTILE IRON PIPELINES