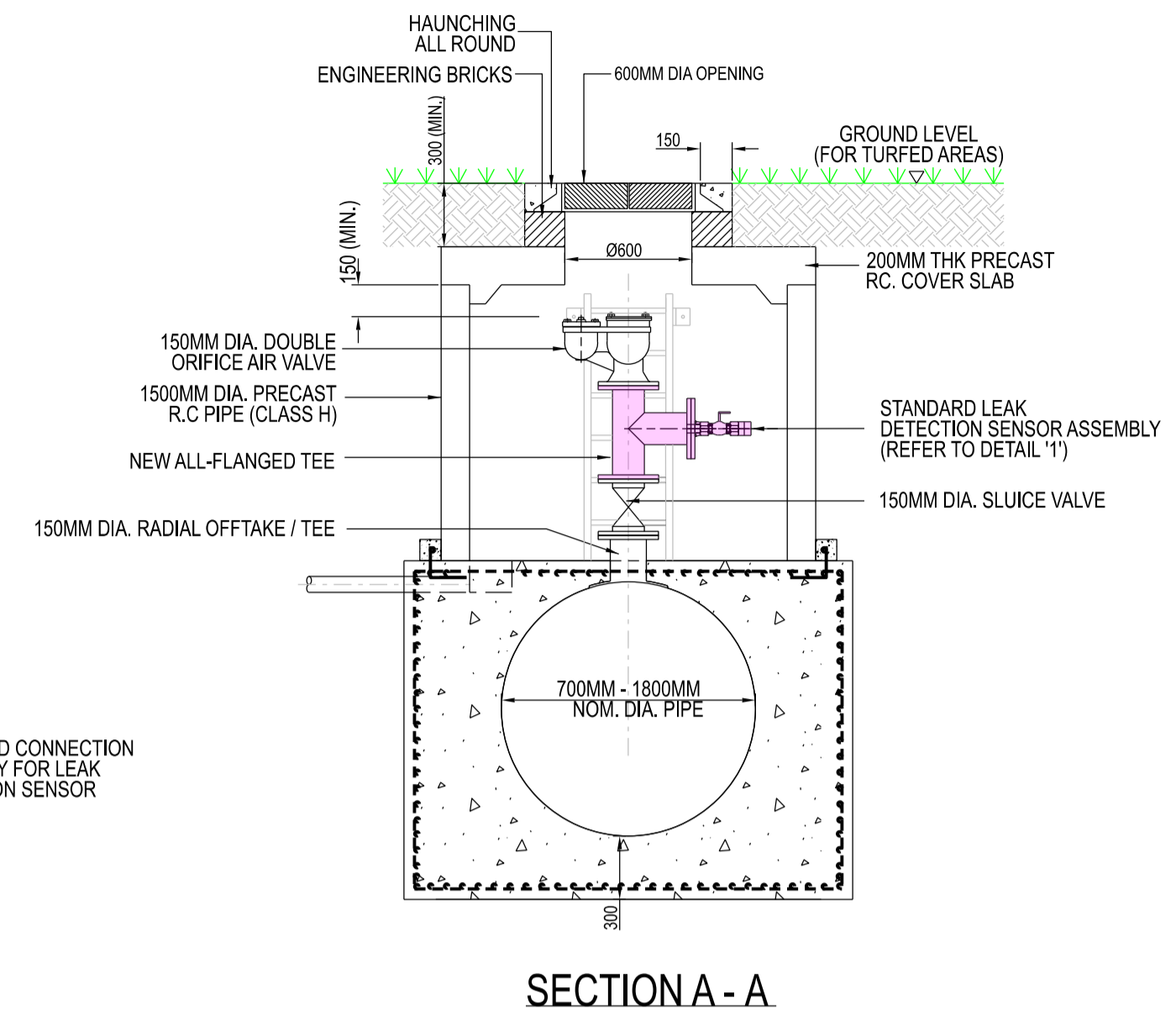
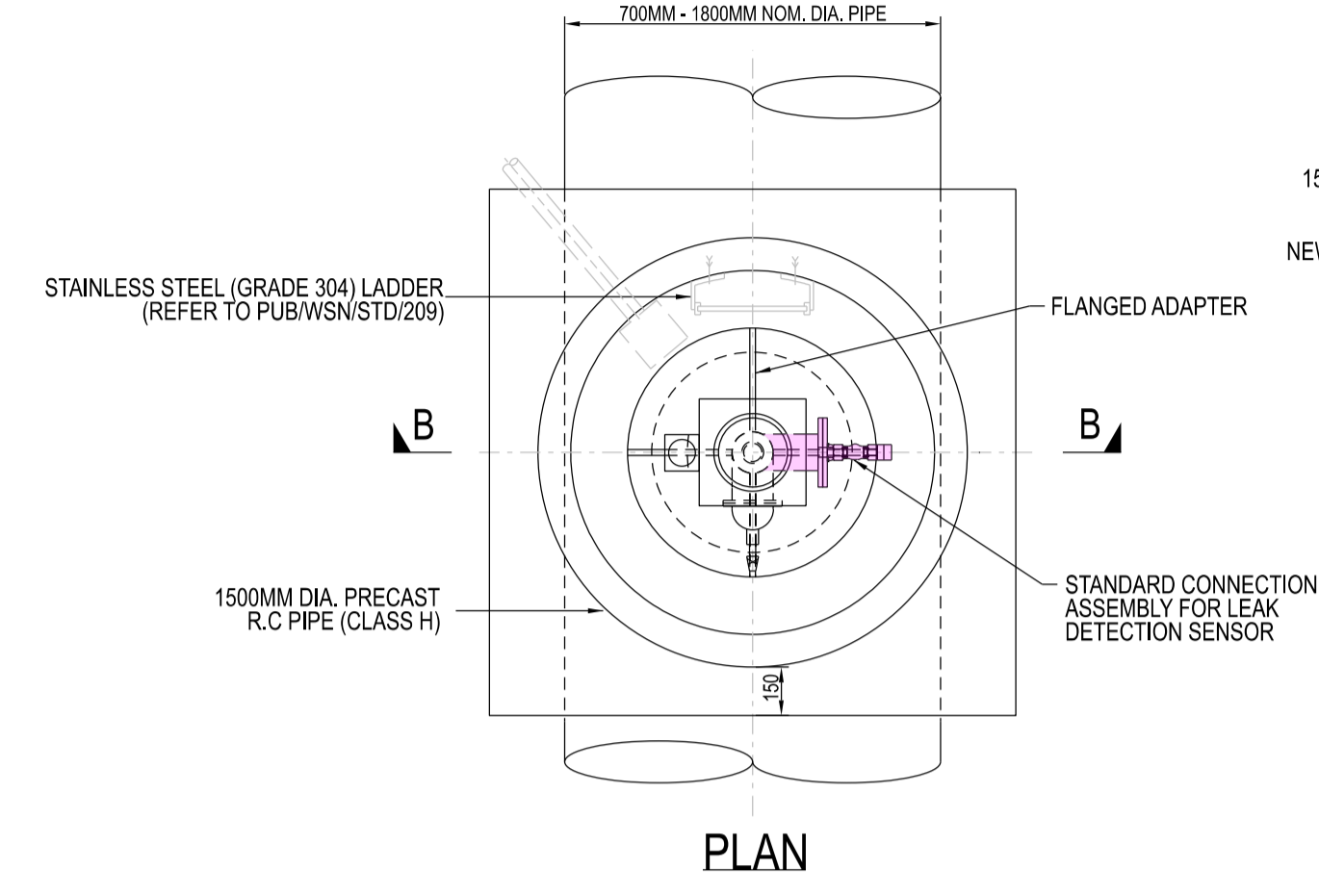


PLAN

EXISTING AIR VALVE CHAMBER  
(WITHOUT ACCESS MANHOLE)  
SCALE 1:30

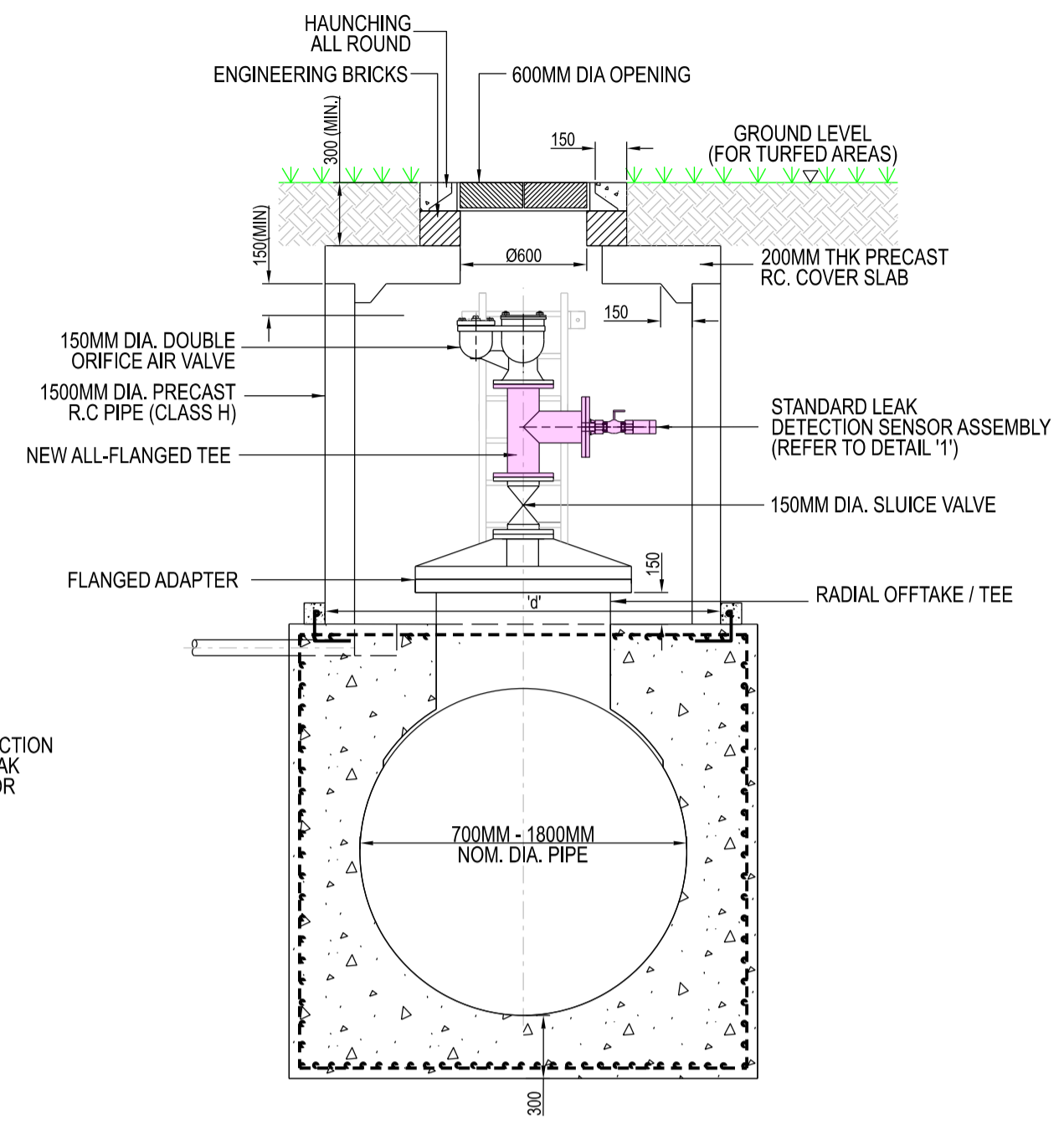


SECTION A - A

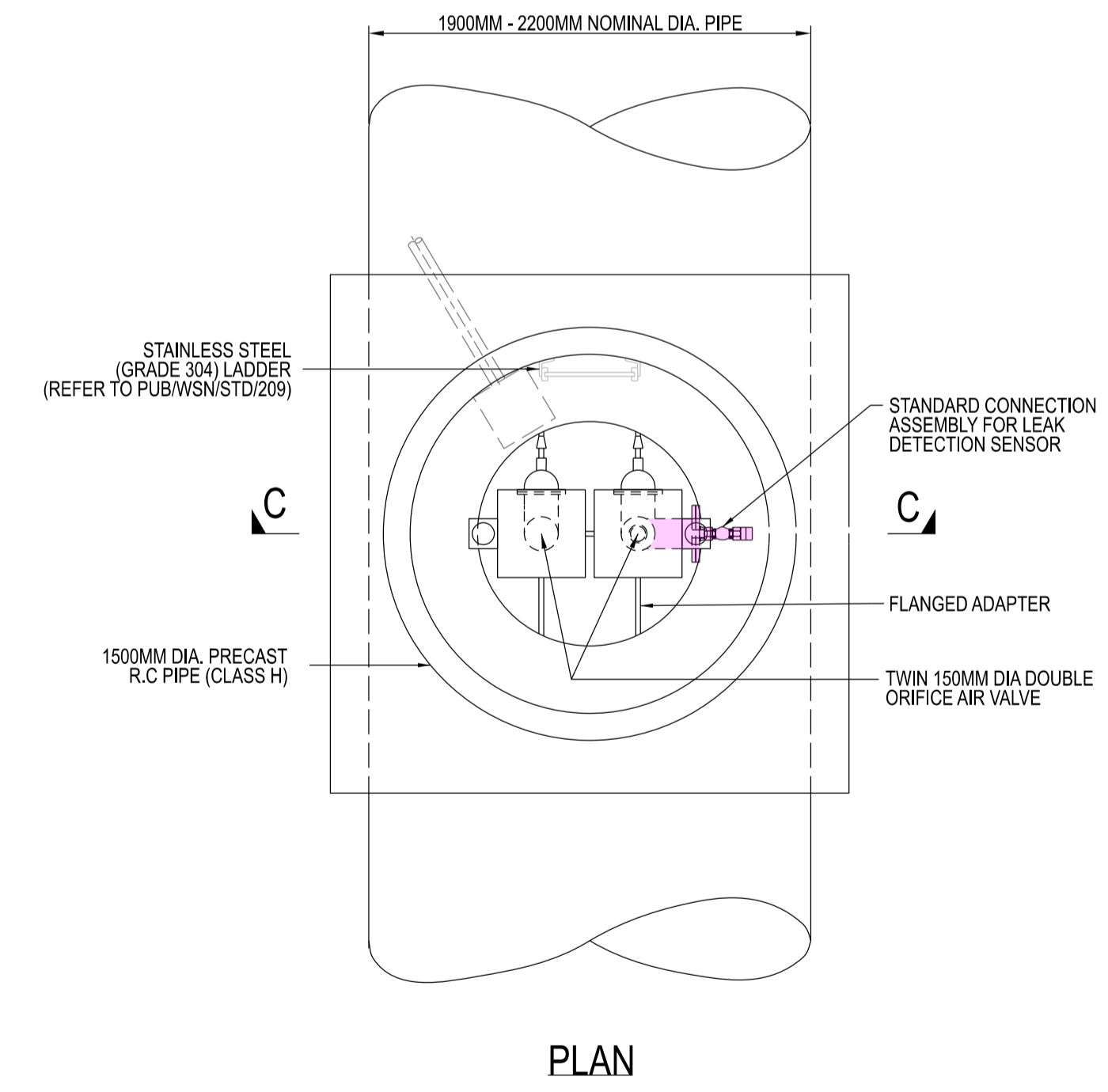


PLAN

EXISTING SINGLE AIR VALVE CHAMBER  
(WITH ACCESS MANHOLE)  
SCALE 1:30

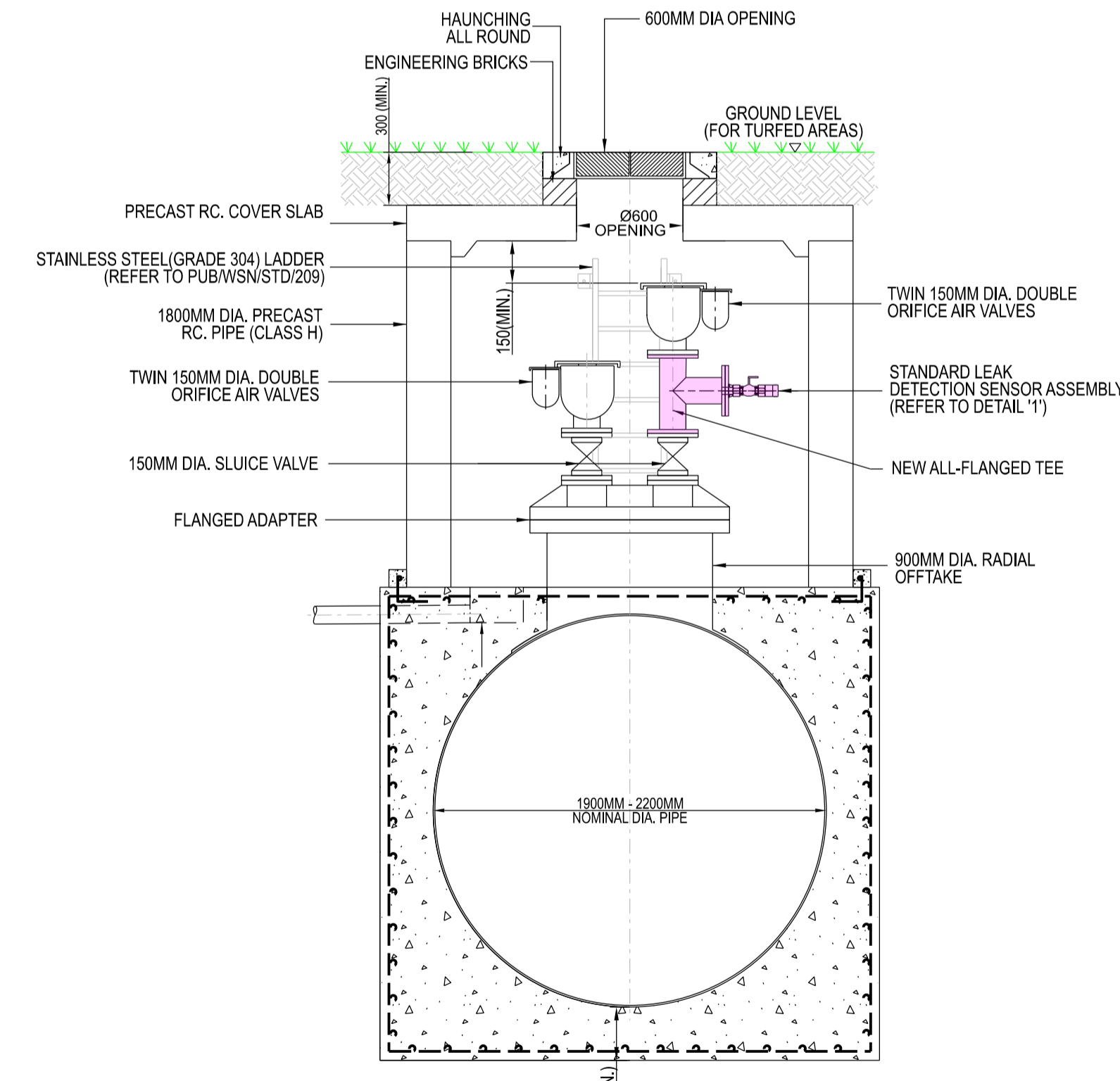


SECTION B - B

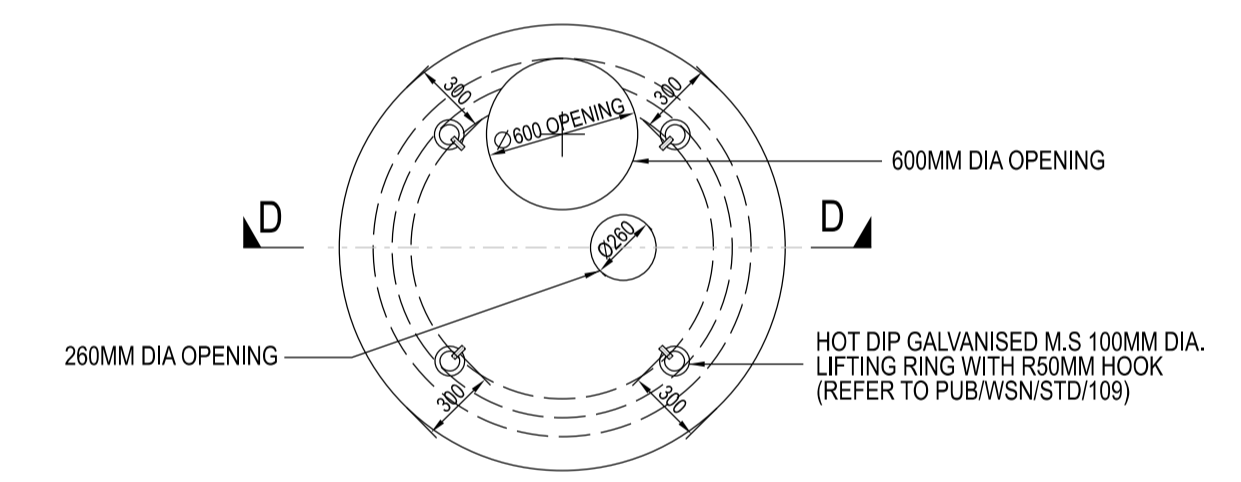


PLAN

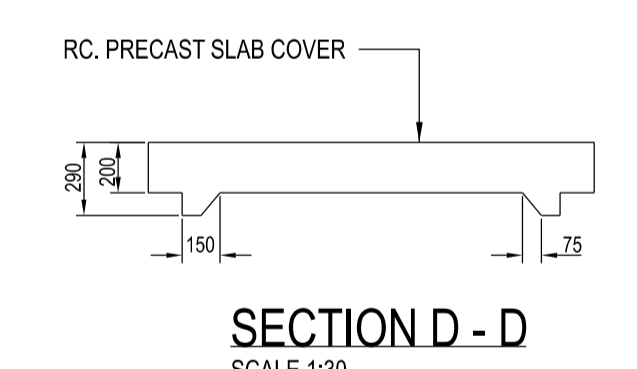
EXISTING TWIN AIR VALVE CHAMBER  
(WITH ACCESS MANHOLE)  
SCALE 1:30



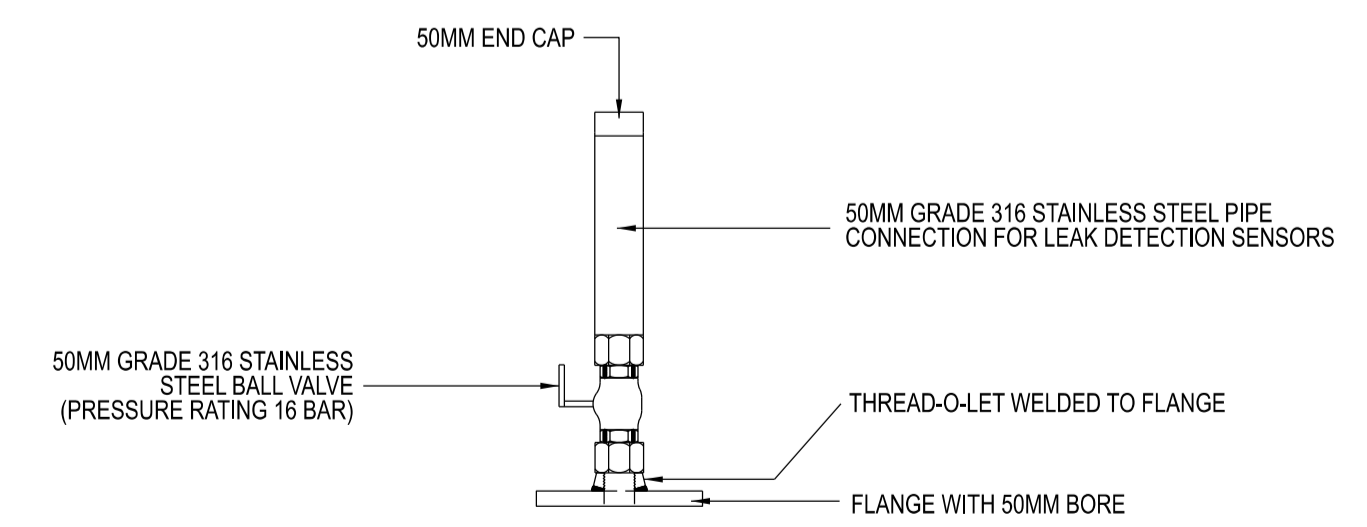
SECTION C - C



PLAN OF PRECAST COVER SLAB FOR AIR VALVE CHAMBER  
(WITH ACCESS MANHOLE)  
SCALE 1:30



SECTION D - D  
SCALE 1:30



DETAIL 1  
STANDARD LEAK DETECTION SENSOR ASSEMBLY  
SCALE 1:10

- NOTES:
1. ALL DIMENSIONS ARE IN MILLIMETRES UNLESS OTHERWISE STATED.
  2. THE CONTRACTOR SHALL REFER TO THE GENERAL NOTES IN DRAWING NO. PUB/WSN/GN/001.
  3. SHADED ITEMS IN THIS DRAWING SHOWS THE NEW PIPE FITTINGS AND SENSOR ASSEMBLY.
  4. ASSEMBLY FOR LEAK DETECTION SENSORS ARE TO BE INSTALLED AT NOT MORE THAN 750M C/C ALONG THE PIPELINE (THE LEAK DETECTION SENSORS WILL BE INSTALLED UNDER SEPARATE CONTRACT).
  5. ALL STAINLESS STEEL BOLTS, NUTS AND GASKETS AT FLANGES SHALL BE REPLACED FOR INSTALLATION OF ALL-FLANGED TEE AND SENSOR ASSEMBLY.

DRAWING NO.:	PUB/WSN/STD/120		
DATE OF ISSUE:	DEC 2022	SCALE:	AS SHOWN
REV.:	DATE:	REV.:	-

INSTALLATION OF LEAK DETECTION SENSOR ASSEMBLY IN EXISTING AIR VALVE CHAMBER