

Quick Guide to Drainage TOP Submission



Lower Seletar Reservoir

Centralised Services Department (Building Plan Unit)



WHAT DO YOU NEED TO SUBMIT?

- Cover letter stating intention of submission i.e TOP Application for Drainage.
 - Complete the CORENET form and ticking the scope of completed drainage works you are applying TOP for.
 - Ensure DC and all DP Clearance Certificates for **Minor and Other Drainage Works** pertaining to the project had been obtained, and attach with the TOP submission. All deviations in drainage works from approved DC and DP must be approved before the TOP submission.
 - Documents as specified under “Attachments” of the CORENET form.
-

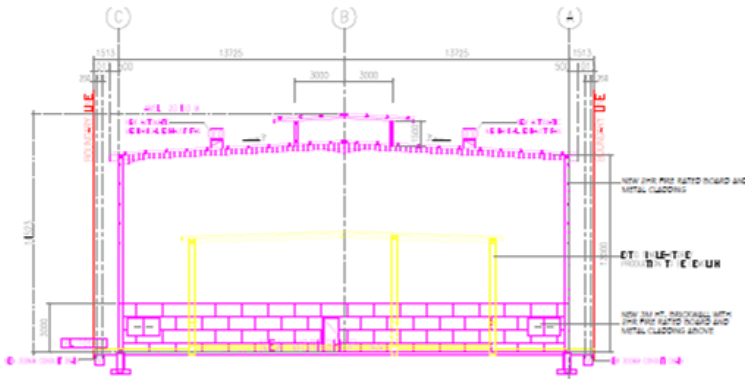
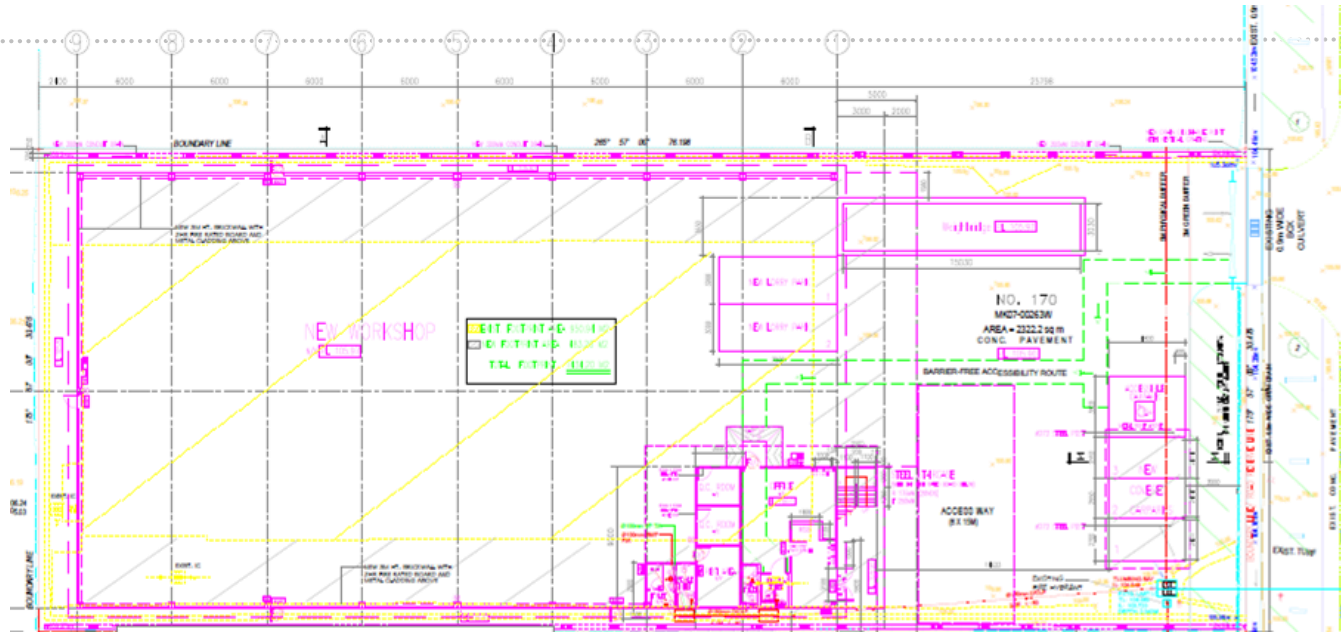
WHAT DO YOU NEED TO SUBMIT?

- All “As-built” or “As-constructed” drawings shall be endorsed by the relevant Qualified Persons (PE or Architect).
- As-built drawings shall be updated from the approved DP drawings, with all amendments clouded and annotated as **”AS-BUILT”** or **”AS-CONSTRUCTED”**, submitted in CAD format.
- As-built drawings (Site Plan, Basement plans, 1st Storey plan, Cross Sectional details), showing all drainage works including the boundary/drainage reserve lines, internal drainage system, storm water drainage systems (including flood barriers/pumped drainage system/ABC Waters design features/structural detention and retention features), common drain, external drainage system, discharge points, platform and crest levels.

WHAT DO YOU NEED TO SUBMIT?

- Vertical gratings shall be provided at the outlet discharge points of the internal drain within the proposed site. Please annotate and indicate clearly the vertical gratings on all the plans.
- As-built survey plans, prepared and endorsed by a registered surveyor, confirming that the platform levels, crest levels and flood protection levels are constructed in accordance with approved plans, submitted in CAD format.

Sample of As-built drawing

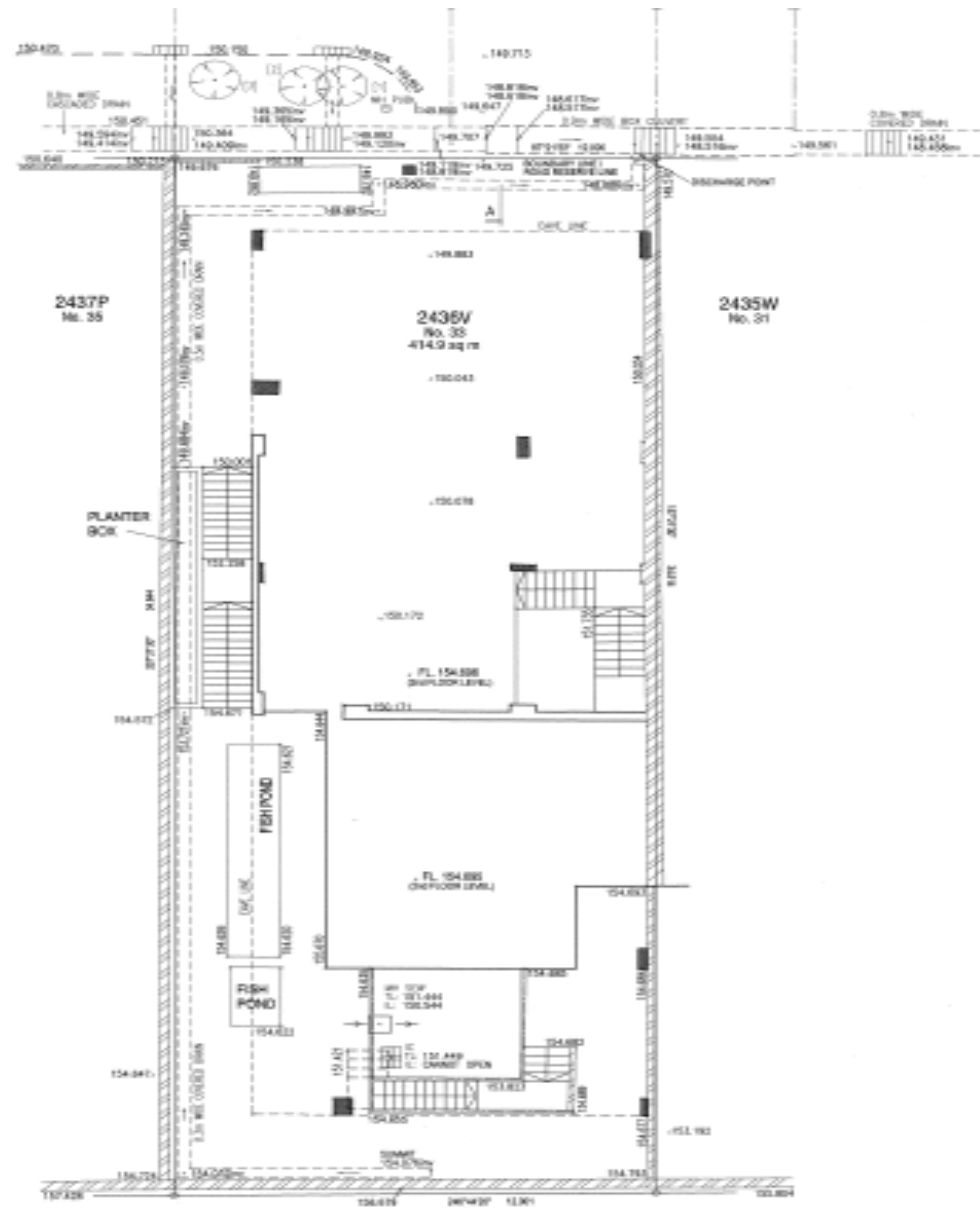


SECTION A-A
SCALE: 1 : 150



SECTION B-B

Sample of As-built survey plan



COMMONLY MADE MISTAKES

- No cover letter and wrong CORENET form
 - Remember to attach a cover letter with the correct CORENET form for your submission.
 - Seek approval for waivers and deviations from the COP or approved DC/DP by highlighting clearly in cover letter and Deviation Form (PUB-DEV-DRA).
- Wrong classification of drainage works
 - Tick the correct drainage works according to classification under “minor” and “other drainage”.
- Incomplete submission
 - Missing endorsements as required by PUB.
 - Missing documents as required under the list of “Attachments” stated in the CORENET form.

Thank You



Lower Seletar Reservoir