

Quick Guide to Drainage CSC Submission



Lower Seletar Reservoir

Centralised Services Department (Building Plan Unit)



WHAT DO YOU NEED TO SUBMIT?

- Cover letter stating intention of submission i.e Application for CSC Drainage.
 - Complete the CORENET form and ticking the scope of completed drainage works you are applying CSC for.
 - Ensure DC and all DP Clearance Certificates for **Minor and Other Drainage Works** pertaining to the project had been obtained, and attach with the CSC submission. All deviations in drainage works from approved DC and DP must be approved before carrying out works on site and CSC submission.
 - Documents as specified under “Submission Checklist” of the CORENET form.
-

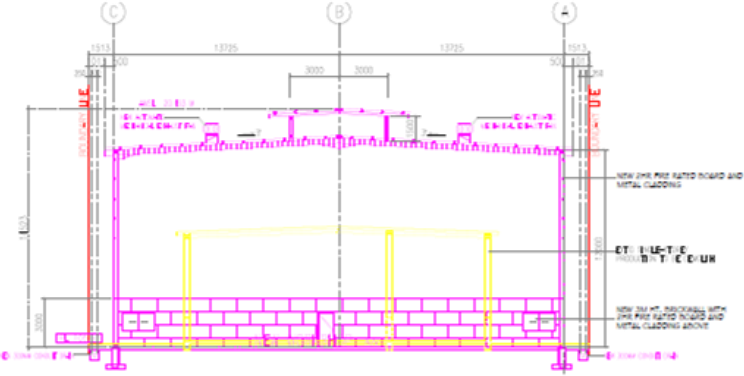
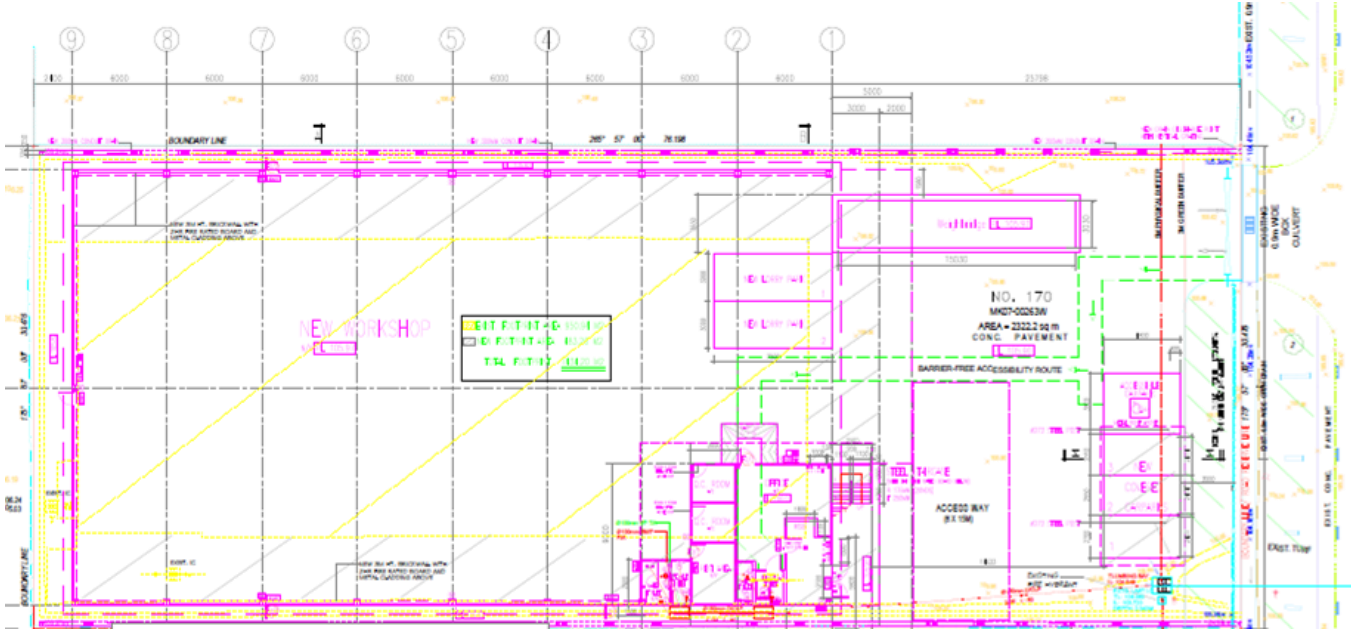
CSC FOR WORKS AFFECTING MINOR DRAINAGE

- All “As-built” or “As-constructed” drawings shall be endorsed by the relevant Qualified Persons (PE or Architect).
- As-built drawings showing minor drainage works shall be updated from the approved DP drawings, with all amendments clouded and annotated as ”**AS-BUILT**” or “**AS-CONSTRUCTED**”, submitted in CAD format.
- As-built calculations for deviations and amendments in drainage works.

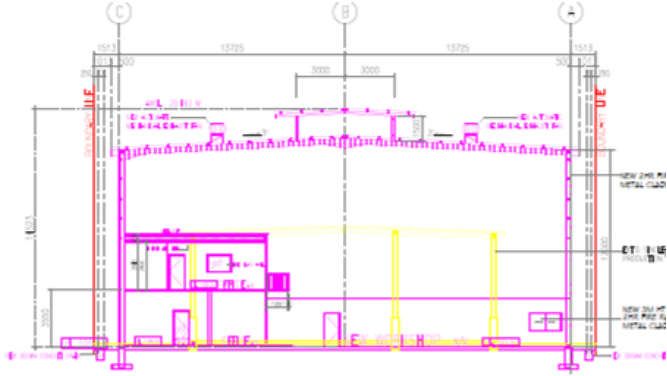
CSC FOR WORKS AFFECTING MINOR DRAINAGE

- As-built survey plans, prepared and endorsed by a registered surveyor, confirming that the platform levels, crest levels and flood protection levels are constructed in accordance with approved plans, submitted in CAD format.
- Vertical gratings shall be provided at the outlet discharge points of the internal drain within the proposed site. Please annotate and indicate clearly the vertical gratings on all the plans.

Sample of As-built Drawing for minor works



SECTION A-A
SCALE: 1 : 150



SECTION B-B

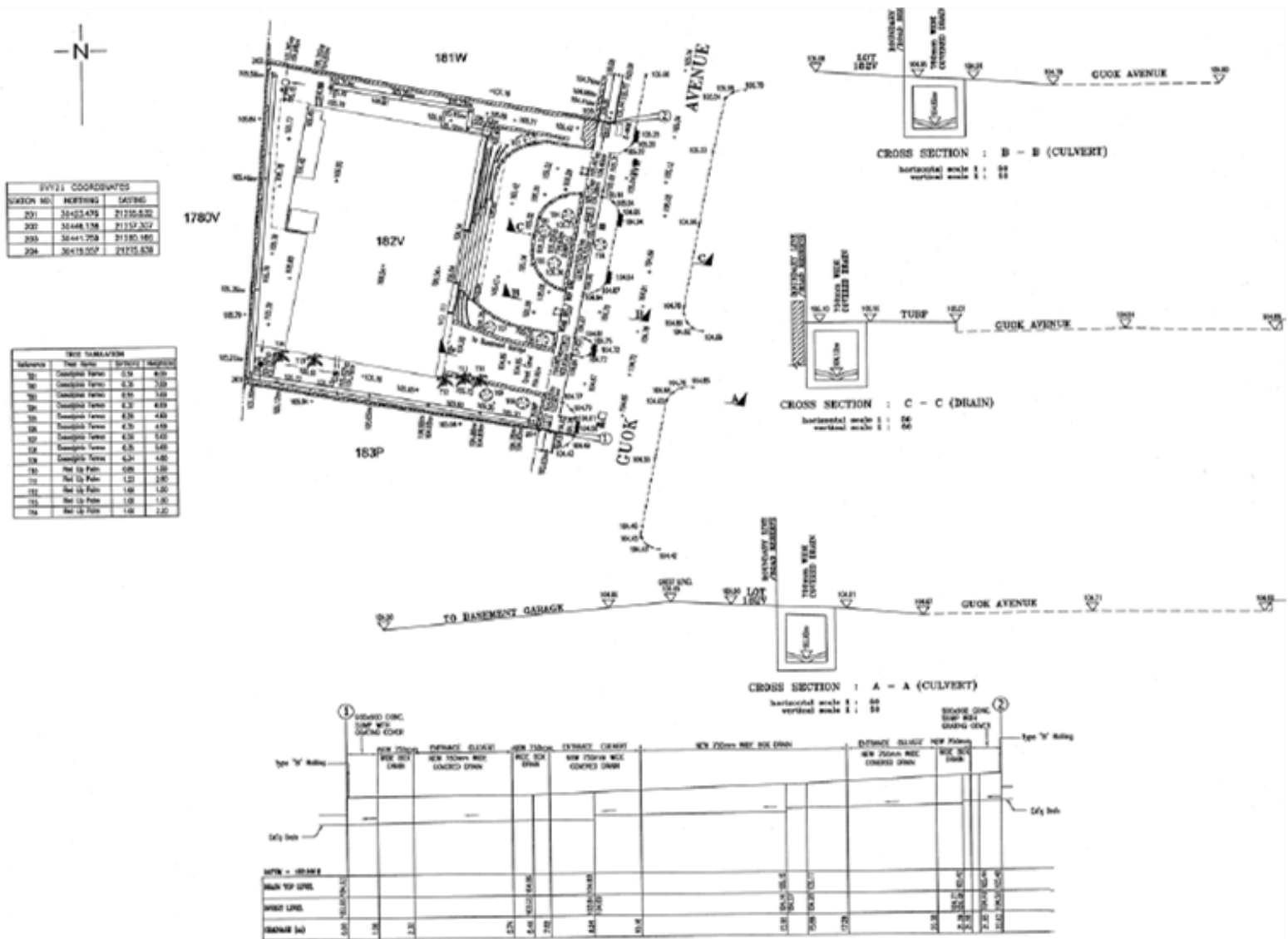
CSC FOR WORKS AFFECTING OTHER DRAINAGE

- As-built drainage drawings and piling records shall be prepared according to the requirements stated in Appendix 5 of COP.
- As-built drawings shall be submitted for completed drainage works and approved structures within Drainage Reserve and roadside drains (for handing over to PUB). The PE shall duly complete the Handing Over Form of completed drainage works.
- As-built drawings shall be submitted for other drainage works (structural detention/retention features/ABC Waters design features) as required by PUB.

CSC FOR WORKS AFFECTING OTHER DRAINAGE

- As-built drawings shall be updated from the approved DP drawings, with all amendments clouded and annotated as **"AS-BUILT"** or **"AS-CONSTRUCTED"**, submitted in CAD format.
- As-built calculations for deviations and amendments in drainage works.
- As-built survey plans, prepared and endorsed by a registered surveyor, confirming that the platform levels, crest levels and flood protection levels are constructed in accordance with approved plans, submitted in CAD format.

Sample of As-built Drawing for other works



CSC FOR WORKS AFFECTING OTHER DRAINAGE

- As-built photos of the entrance culvert/roadside drain showing clearly the entire length of the external drainage works. It is essential that the QP submits accurate photographic records for drainage works to be handed to PUB upon 1 year DLP.
- All services overcrossing and slab over of drain or Drainage Reserve are constructed according to approved DC/DP drawings.
- The photos for internal and external views of the drains shall show only approved services and structures.

Photos of Internal & External View of Drains



Entire Length (internal and external) of the external drainage works must be shown clearly

Handing Over Form of Completed Drainage Works

HANDING OVER OF COMPLETED DRAINAGE WORKS

PROJECT : _____

This is to confirm the following works under the above project to be handed over to Catchment & Waterways Department for maintenance

S/No	Brief description of drainage works. (excluding pedestrian bridge, pedestrian footpath over drain which are NOT to be handed over to Catchment And Waterways Department)	Remarks
1	Open drains [Length (m) x Width (m) x Depth (m)]	
2	Closed drains [Length (m) x Width (m) x Depth (m)]	
3	Drop Inlet Chambers (number)	
4	Closed Scuppers [Length (m)]	
5	Opened Scuppers [Length (m)]	
6	Construction Cost (\$)	
7	Other items to be handed over	

Handed over by : _____
 Project Officer : _____
 Signature : _____
 Date : _____

To be completed and endorsed by PE for submission with CSC Application for External Drains

COMMONLY MADE MISTAKES

- No cover letter and wrong CORENET form
 - Remember to attach a cover letter with the correct CORENET form for your submission
 - Seek approval for waivers and deviations from the COP or approved DC/DP by highlighting clearly in cover letter and Deviation Form (PUB-DEV-DRA).
- Wrong classification of drainage works
 - Tick the correct drainage works according to classification under “minor” and “other drainage”.
- Incomplete submission
 - Missing endorsements as required by PUB.
 - Missing documents as stated in the “Submission Checklist” of the CORENET form

Thank You



Lower Seletar Reservoir